

VISUAL APPROACH CHART - ICAO

1:250000
1 0 1 2 3 4 5 km
1 0 1 2 3 NM

AD ELEV 1245 FEET

ELEV and ALT in ft
HGT in ft above AD ELEV

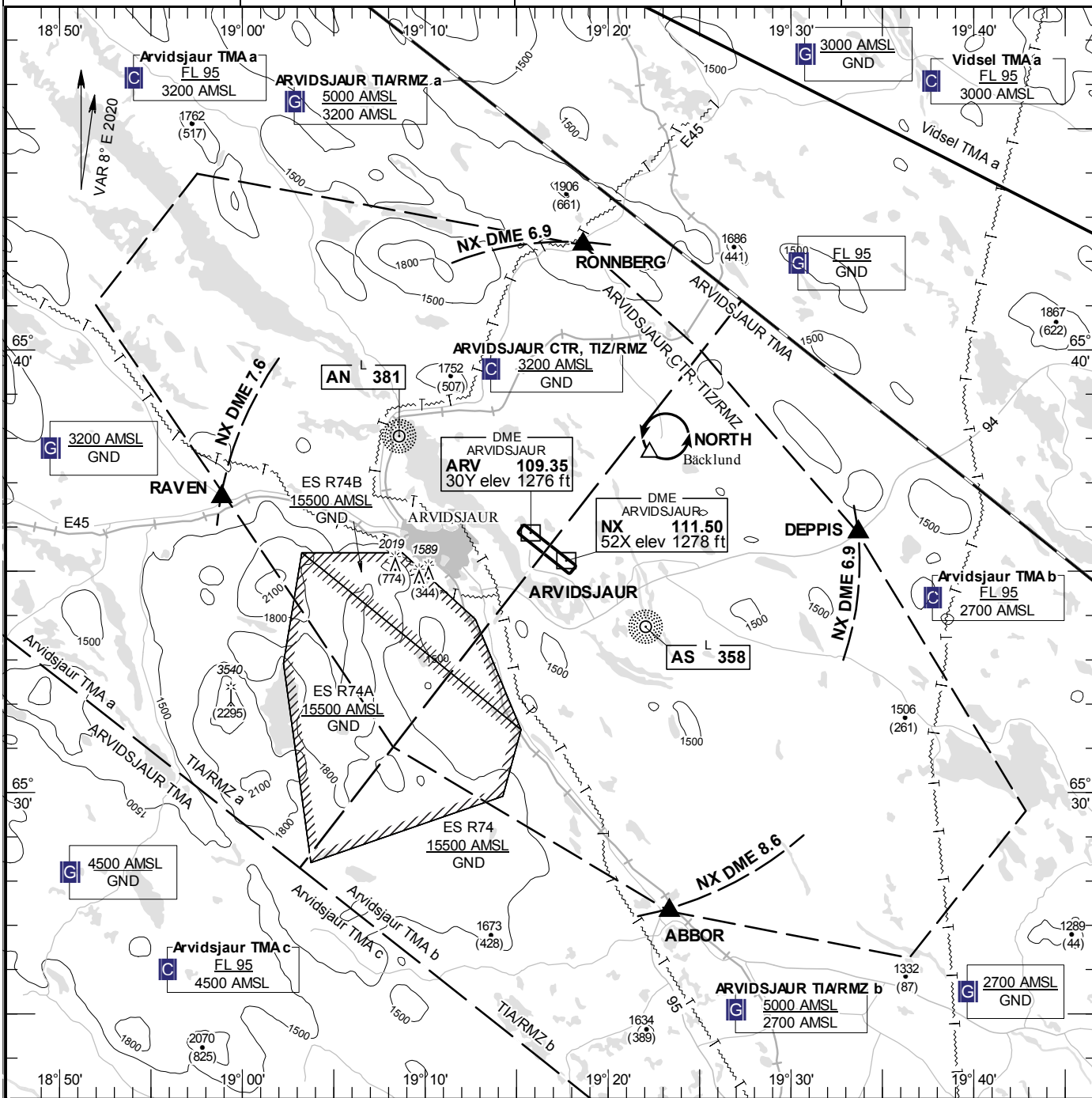
TA 5000 AMSL

ARVIDSJAUR TOWER/INFORMATION

122.730

AD 2 ESNX 6-1

ARVIDSJAUR SWEDEN



Communication failure

- 1 SQUAWK 7600
- 2 Enter CTR via DEPPIS – Holding NORTH at or below 2600 ft AMSL to traffic circuit. Transmit blind your intentions.
- 3 Flash LDG-lights and watch TWR for optical signals.

RWY NR	THR ELEV	PAPI (MEHT)
12	1242.0 ft	Left/3.00° (53 ft)
30	1240.1 ft	Left/3.00° (56 ft)

Entry / exit point

RONNBERG	654222N 0191838E
DEPPIS	653552N 0193341E
ABBOR	652719N 0192321E
RAVEN	653640N 0185852E

Remark

SPECIAL REGULATON:
RWY 30: Right hand circuit.

Legend

See GEN 2.3

Holding

NORTH: Hold at the end of the road at Bäcklund, northeast of point 653739N 0192217E