

VISUAL APPROACH CHART - ICAO

1:250000

1 0 1 2 3 4 5 km

1 0 1 2 3 NM

AD ELEV 17 FEET

ELEV and ALT in ft
HGT in ft above AD ELEV

TA 5000 AMSL

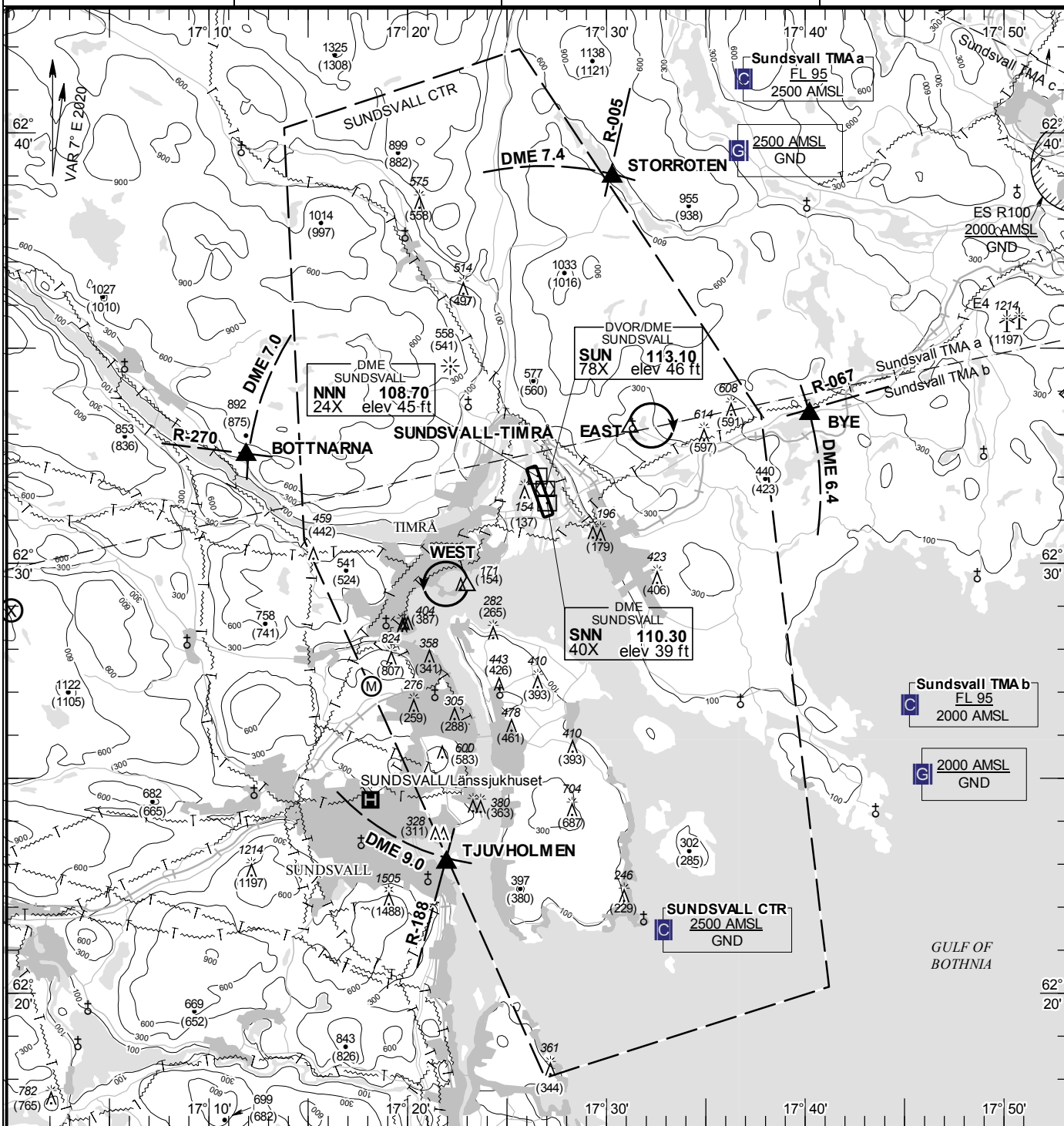
SUNDSVALL TOWER 129.555

118.105

SUNDSVALL ATIS 127.405

AD 2 ESNN 6-1

SUNDSVALL-TIMRÅ SWEDEN



- 1 SQUAWK 7600
- 2 Contact TWR on TEL +46 (0)60 64 62 08 for clearance.
- 3 If telephone contact cannot be established, enter CTR via BYE to holding EAST.
- 4 Hold in EAST 5 min and flash with landing lights and wait for optical signals from R-TWR.
- 5 If optical signals cannot be perceived, start APCH via overhead to RWY of choice.
- 6 Confirm RWY free.
- 7 Land and taxi via TWY D to apron S.

RWY NR	THR ELEV	PAPI (MEHT)
16	17.1 ft	Left/3.25° (60 ft)
34	13.3 ft	Left/3.00° (57 ft)

Legend
See GEN 2.3

Remark
Model flying area over Öraker

Entry / exit point

STORROTEN	623858N 0173017E
BYE	623327N 0174013E
TJUVHOLMEN	622301N 0172157E
BOTTNARNA	623230N 0171152E

Holding

EAST:	Hold at Hässjö church, east of point 623308N 0173112E
WEST:	Hold west of Viststavarv, west of point 622927N 0172258E

LFV

CHANGE: COM Failure, OBST

AIRAC AMDT 2/2024 **21 MAR 2024**