

**VISUAL APPROACH CHART - ICAO**

1:250000



**AD ELEV 18 FEET**

ELEV and ALT in ft  
HGT in ft above AD ELEV

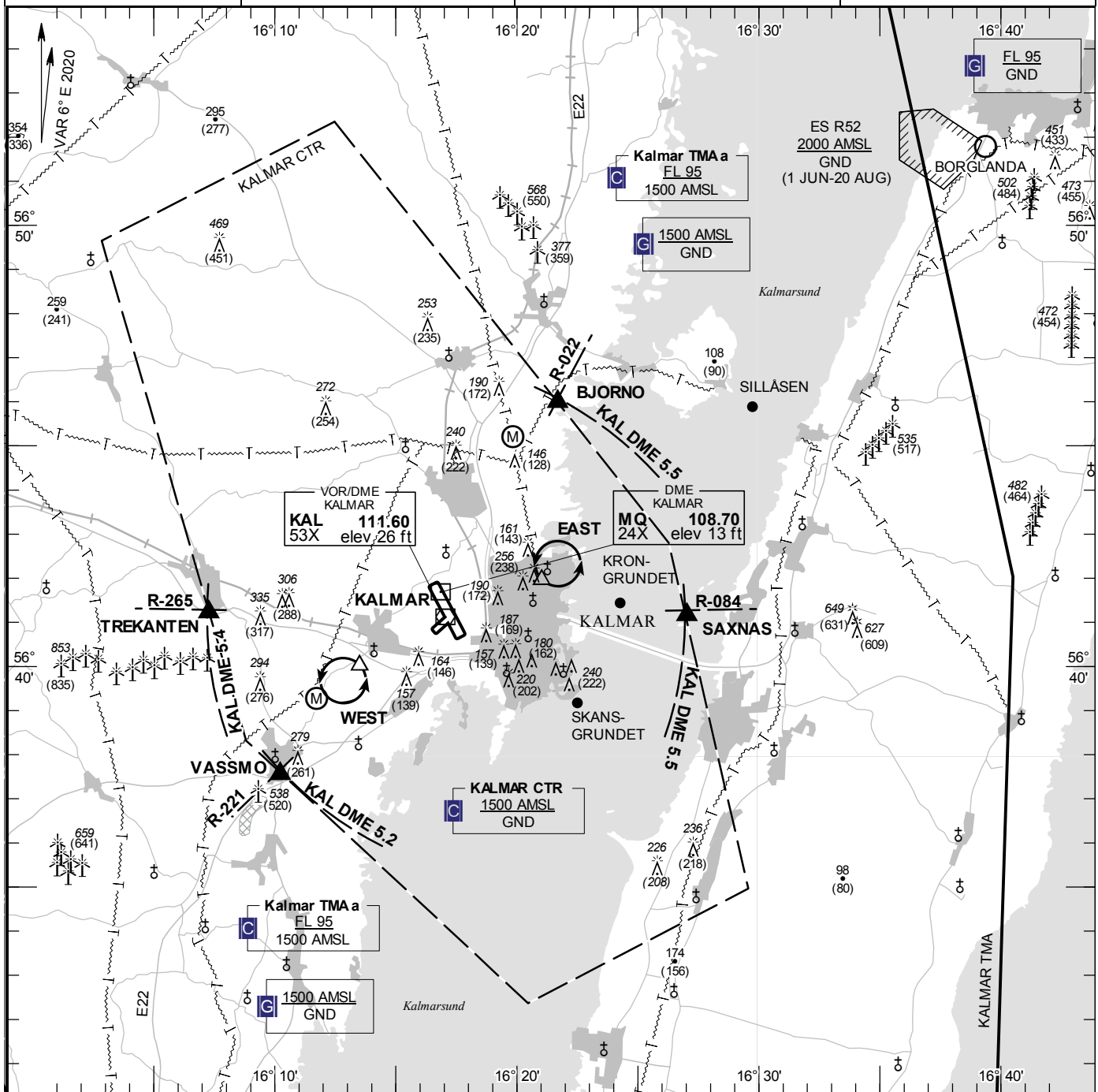
**TA 5000 AMSL**

**KALMAR TOWER**

**130.805**

**AD 2 ESMQ 6-1**

**KALMAR SWEDEN**



**Communication failure**

- 1 SQUAWK 7600
- 2 Enter CTR via VASSMO – Holding WEST or via BJORNO/SAXNAS – Holding EAST at or below 1500 ft AMSL to traffic circuit. Transmit blind your intentions.
- 3 Flash LDG-lights and watch TWR for optical signals.

RWY NR	THR ELEV	PAPI (MEHT)
16	18.0 ft	Left/3.00° (52 ft)
34	16 ft	Left/3.00° (53 ft)
05	10 ft	NIL
23	10 ft	NIL

**Entry / exit point**

BJORNO	564559N 0162141E
SAXNAS	564109N 0162701E
VASSMO	563733N 0161013E
TREKANTEN	564113N 0160716E

**Holding**

- EAST:** Hold north east of the watertower, north east of point 564156N 0162102E
- WEST:** Hold south west of church Dörby, south west of point 564000N 0161330E

**Remark**

Model flying area 400 ft GND

**Legend**

See GEN 2.3