

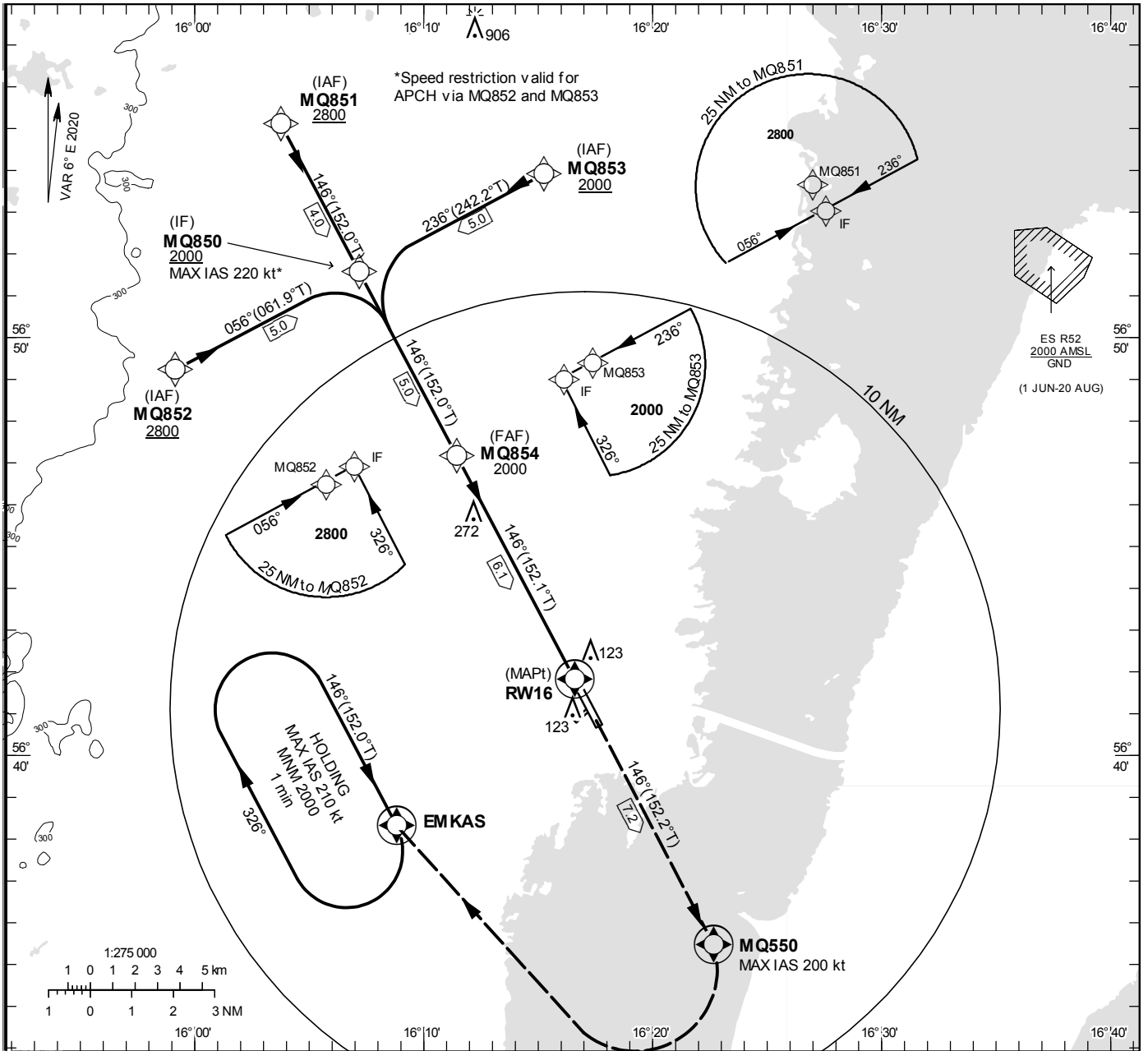
**INSTRUMENT  
APPROACH  
CHART – ICAO**

**THR ELEV 18 ft, AD ELEV 18 ft**  
OCH are related to THR.  
BRG are MAG (True).  
ALT, HGT and ELEV in ft.

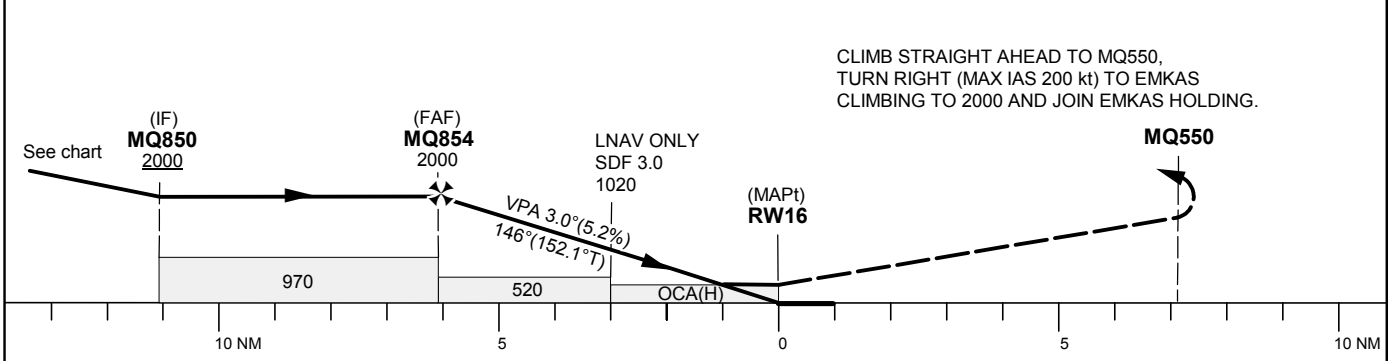
KALMAR TOWER 130.805

RNP RWY 16

EGNOS Ch 94400 E 16A



TA 5000 ft AMSL RDH 50 ft



Cat of ACFT	OCA (H)				Final approach	Distance FAF-MAPt 6.1 NM						
	A	B	C	D	Dist to RW16 (NM)	6	5	4	3	2	1	
LPV	254(236)	266(248)	274(256)	284(266)	ALT	1980	1660	1340	1020	700	390	
LNAV	370(360)				GS	kt	80	100	120	140	160	180
					Rate of descent	ft/min	425	530	635	745	850	955

## RNP RWY 16 via MQ851

Path Desc	Waypoint Identifier	Fly-over	Course °M(°T)	Dist (NM)	Turn Dir	Altitude	Speed	VPA/RDH	Rec Navaid	Navigation Specification
IF	MQ851	-	-	-	-	+2800	-	-	-	RNP APCH
TF	MQ850	-	146°(152.0°)	4.0	-	+2000	-	-	-	RNP APCH

## RNP RWY 16 via MQ852

Path Desc	Waypoint Identifier	Fly-over	Course °M(°T)	Dist (NM)	Turn Dir	Altitude	Speed	VPA/RDH	Rec Navaid	Navigation Specification
IF	MQ852	-	-	-	-	+2800	-	-	-	RNP APCH
TF	MQ850	-	056°(061.9°)	5.0	-	+2000	-220	-	-	RNP APCH

## RNP RWY 16 via MQ853

Path Desc	Waypoint Identifier	Fly-over	Course °M(°T)	Dist (NM)	Turn Dir	Altitude	Speed	VPA/RDH	Rec Navaid	Navigation Specification
IF	MQ853	-	-	-	-	+2000	-	-	-	RNP APCH
TF	MQ850	-	236°(242.2°)	5.0	-	+2000	-220	-	-	RNP APCH

Path Desc	Waypoint Identifier	Fly-over	Course °M(°T)	Dist (NM)	Turn Dir	Altitude	Speed	VPA/RDH	Rec Navaid	Navigation Specification
IF	MQ850	-	-	-	-	+2000	-	-	-	RNP APCH
TF	MQ854	-	146°(152.0°)	5.0	-	@2000	-	-	-	RNPAPCH
TF	RW16	Y	146°(152.1°)	6.1	-	@68	-	-3.0/50	-	RNP APCH
CF	MQ550	Y	146°(152.2°)	7.2	-	-	-200	-	KAL	RNP APCH
DF	EMKAS	Y	-	-	R	+2000	-	-	-	RNP APCH
HM	EMKAS	Y	146°(152.0°)	-	R	+2000	-210	-	-	RNAV 1

## Inputdata

OperationType	0
SBASProvider	1
AirportIdentifier	ESMQ
Runway	16
RunwayDirection	0
Approach PerformanceDesignator	0
RouteIndicator	
ReferencePathDataSelector	0
ReferencePathIdentifier	E16A
LTP/FTPLatitude	564148.5500N
LTP/FTPLongitude	0161635.9800E
LTP/FTPEllipsoidalHeight(metres)	35.8
FPAPLatitude	564042.7340N
DeltaFPAPLatitude(seconds)	-65.8160
FPAPLongitude	0161739.0860E
DeltaFPAPLongitude(seconds)	63.1060
Threshold CrossingHeight	50.0
TCHUnitsSelector	0
GlidepathAngle(degrees)	3.00
CourseWidth(metres)	105.00
LengthOffset(metres)	256
HAL(metres)	40.0
VAL(metres)	50.0

## Outputdata

DataBlock	10 11 0D 13 05 10 00 00 01 36 31 05 0C E6 54 18 18 35 FC 06 66 15 D0 FD FD 04 ED 01 F4 01 2C 01 64 20 C8 FA 23 BD B8 12
CalculatedCRCValue	23BDB812

## Required Additional Data

ICAOCode	ES
LTP/FTPOrthometricHeight(metres)	5.3
FPAPOrthometricHeight(metres)	4.6