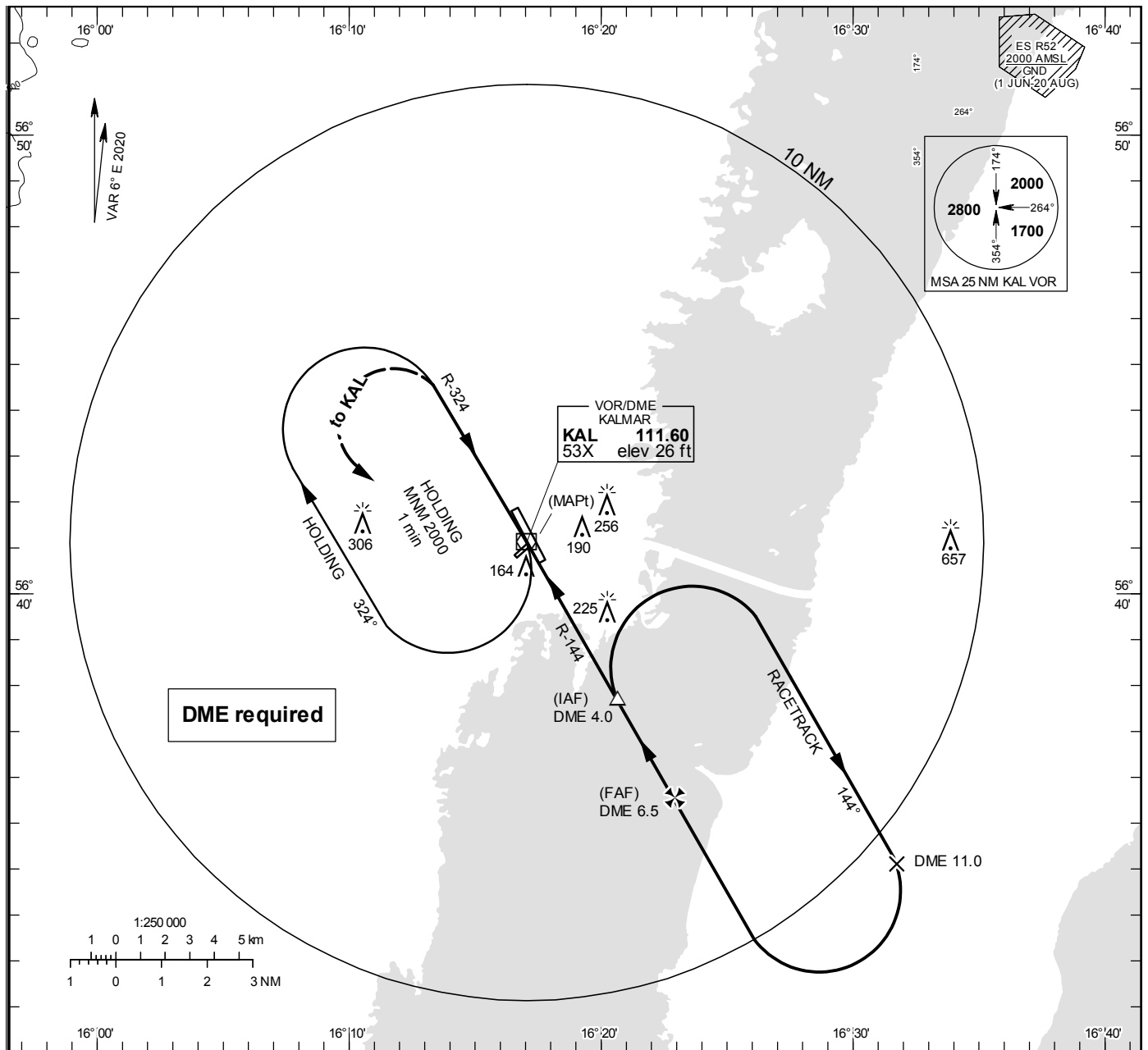


VOR RWY 34

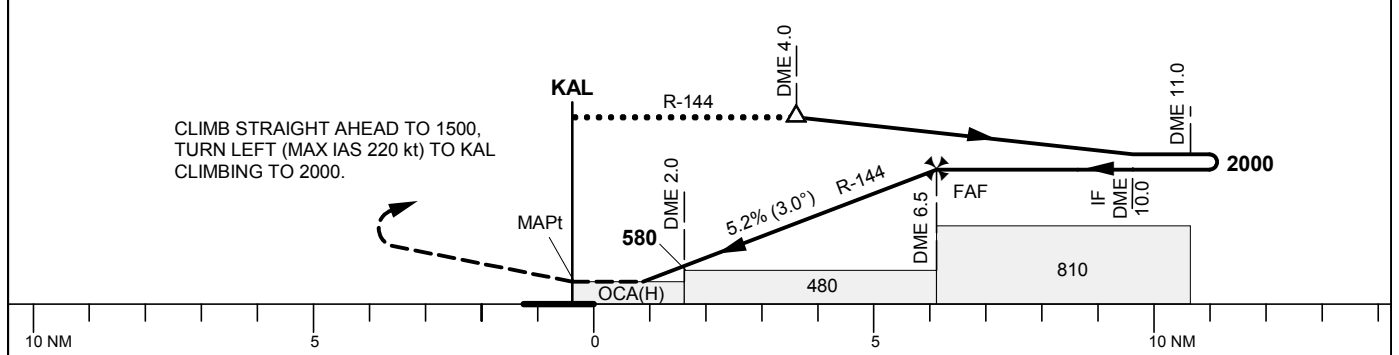
KALMAR TOWER 130.805

THR ELEV 16 ft, AD ELEV 18 ft
OCH are related to THR.
Circling OCH are related to AD ELEV.
BRG are MAG
ALT, HGT and ELEV in ft.

INSTRUMENT
APPROACH
CHART – ICAO



TA 5000 ft AMSL Final APCH line offset 2° Circling MAX IAS 200 kt *Timing not authorized for defining the MAPt



Cat of ACFT	OCA (H)				Final approach DME KAL NM	Distance FAF-MAPt 6.5 NM*						
	A	B	C	D		6	5	4	3	2		
Straight-in Approach	410(400)				ALT	1860	1540	1220	900	580		
Circling	490(480)	560(550)	700(690)	700(690)	GS	80	100	120	140	160	180	
					Time	min:s	4:53	3:54	3:15	2:47	2:26	2:10
					Rate of descent	ft/min	425	530	635	745	850	955