

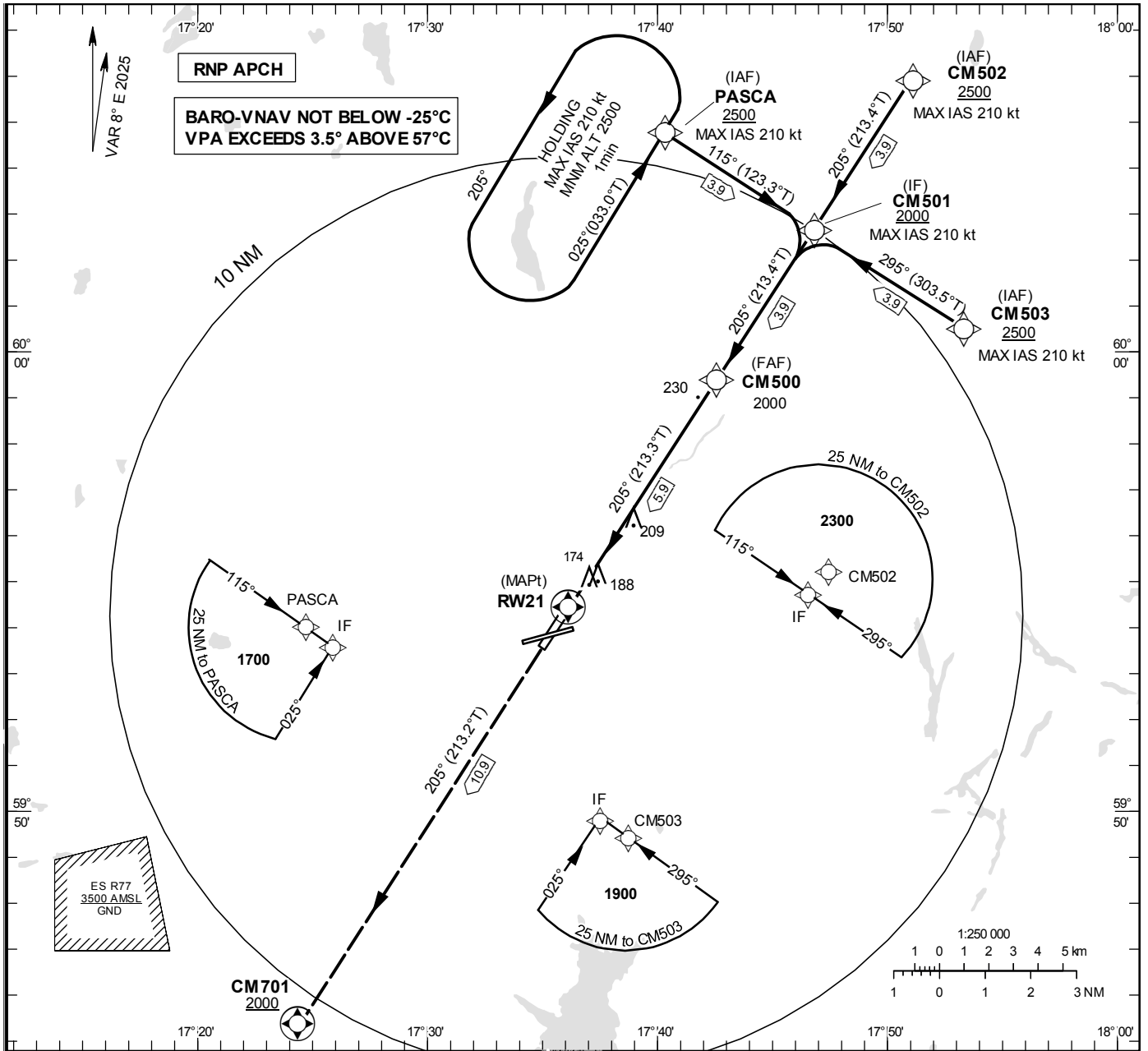
**INSTRUMENT APPROACH CHART – ICAO**

THR ELEV 68.0 ft, AD ELEV 69 ft  
 OCH are related to THR.  
 BRG are MAG (True).  
 ALT, HGT and ELEV in ft.

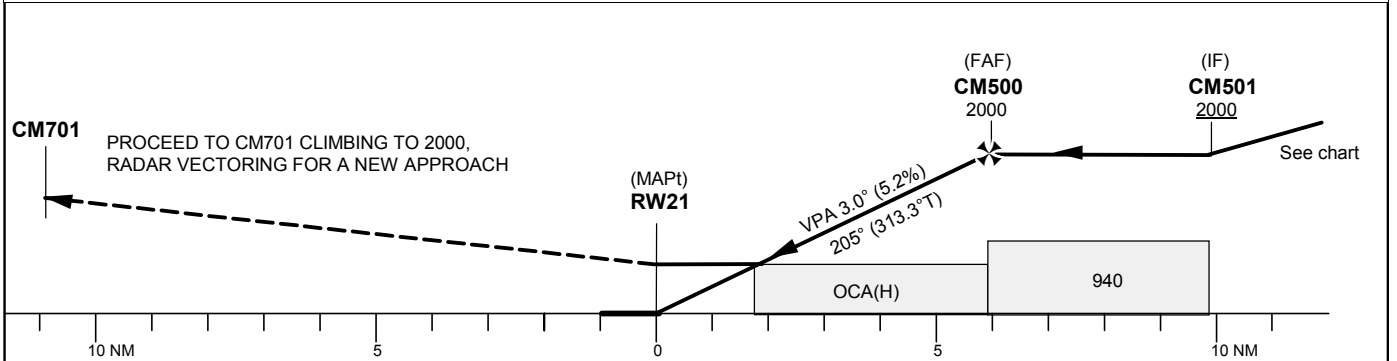
UPPSALA TOWER	119.200
UPPSALA APPROACH	130.400

RNP RWY 21

EGNOS CH 84576 E 21A



TA 5000 ft AMSL RDH 50.0 ft



Cat of ACFT	OCA (H)				Final approach Dist to RW21 (NM)	Distance FAF-MAPt 5.9 NM						
	A	B	C	D		2	3	4	5			
LPV	304 (236)	316 (248)	324 (256)	335 (267)	ALT	750	1070	1390	1710			
LNAV/VNAV	320 (260)	340 (280)	340 (280)	350 (290)	GS	kt	80	100	120	140	160	180
LNAV	480 (420)				Rate of descent	ft/min	425	530	635	745	850	955

## RNP RWY 21 via PASCA

Path Term	Waypoint Identifier	Fly-over	Course °M(°T)	Dist (NM)	Turn Dir	Rest Alts (ft AMSL)	Speed Limits (kt)	VPA/ RDH (°/ft)	Rec Navaid	Navigation Specification
IF	PASCA	-	-	-	-	+2500	-210	-	-	RNP APCH
TF	CM501	-	115° (123.3°)	3.9	-	+2000	-	-	-	RNP APCH

## RNP RWY 21 via CM503

Path Term	Waypoint Identifier	Fly-over	Course °M(°T)	Dist (NM)	Turn Dir	Rest Alts (ft AMSL)	Speed Limits (kt)	VPA/ RDH (°/ft)	Rec Navaid	Navigation Specification
IF	CM503	-	-	-	-	+2500	-210	-	-	RNP APCH
TF	CM501	-	295° (303.5°)	3.9	-	+2000	-	-	-	RNP APCH

## RNP RWY 21 via CM502

Path Term	Waypoint Identifier	Fly-over	Course °M(°T)	Dist (NM)	Turn Dir	Rest Alts (ft AMSL)	Speed Limits (kt)	VPA/ RDH (°/ft)	Rec Navaid	Navigation Specification
IF	CM502	-	-	-	-	+2500	-210	-	-	RNP APCH
TF	CM501	-	205° (213.4°)	3.9	-	+2000	-	-	-	RNP APCH

Path Term	Waypoint Identifier	Fly-over	Course °M(°T)	Dist (NM)	Turn Dir	Rest Alts (ft AMSL)	Speed Limits (kt)	VPA/ RDH (°/ft)	Rec Navaid	Navigation Specification
IF	CM501	-	-	-	-	+2000	-210	-	-	RNP APCH
TF	CM500	-	205° (213.4°)	3.9	-	@2000	-	-	-	RNP APCH
TF	RW21	Y	205° (213.3°)	5.9	-	@118	-	-3.0/50	-	RNP APCH
TF	CM701	Y	205° (213.2°)	10.9	-	+2000	-	-	-	RNP APCH
VM	-	-	205°	-	-	-	-	-	-	RNP APCH

## RNP RWY 21 – Holding at PASCA

Path Term	Waypoint Identifier	Fly-over	Course °M(°T)	Dist (NM)	Turn Dir	Rest Alts (ft AMSL)	Speed Limits (kt)	VPA/ RDH (°/ft)	Rec Navaid	Navigation Specification
HM	PASCA	Y	025°(033.0°)	-	L	+2500	-210	-	-	RNAV1

## FAS Data Block

## RNP RWY 21

## Input data

Operation Type	0
SBAS Provider	1 (EGNOS)
Airport Identifier	ESCM
Runway	21
Runway Letter	0 (None)
Approach Performance Designator	0
Route Indicator	
Reference Path Data Selector	0
Reference Path Identifier	E21A
LTP/FTP Latitude	595426.8200N
LTP/FTP Longitude	0173606.8600E
LTP/FTP Ellipsoidal Height (metres)	44.6
FPAP Latitude	595335.2900N
Delta FPAP Latitude (seconds)	-51.5300
FPAP Longitude	0173459.7400E
Delta FPAP Longitude (seconds)	-67.1200
Threshold Crossing Height	50.0
TCH Units Selector	0 (feet)
Glidepath Angle (degrees)	3.00
Course Width (metres)	105.00
Length Offset (metres)	0
HAL (metres)	40.0
VAL (metres)	50.0

## Output data

Data Block	10 0D 03 13 05 15 00 00 01 31 32 05 08 A1 B5 19 98 CD 8D 07 BE 15 6C 6D FE A0 F3 FD F4 01 2C 01 64 00 C8 FA 33 2A A2 0A
Calculated CRC Value	332AA20A

## Required Additional Data

ICAO Code	ES
LTP/FTP Orthometric Height (metres)	20.7