

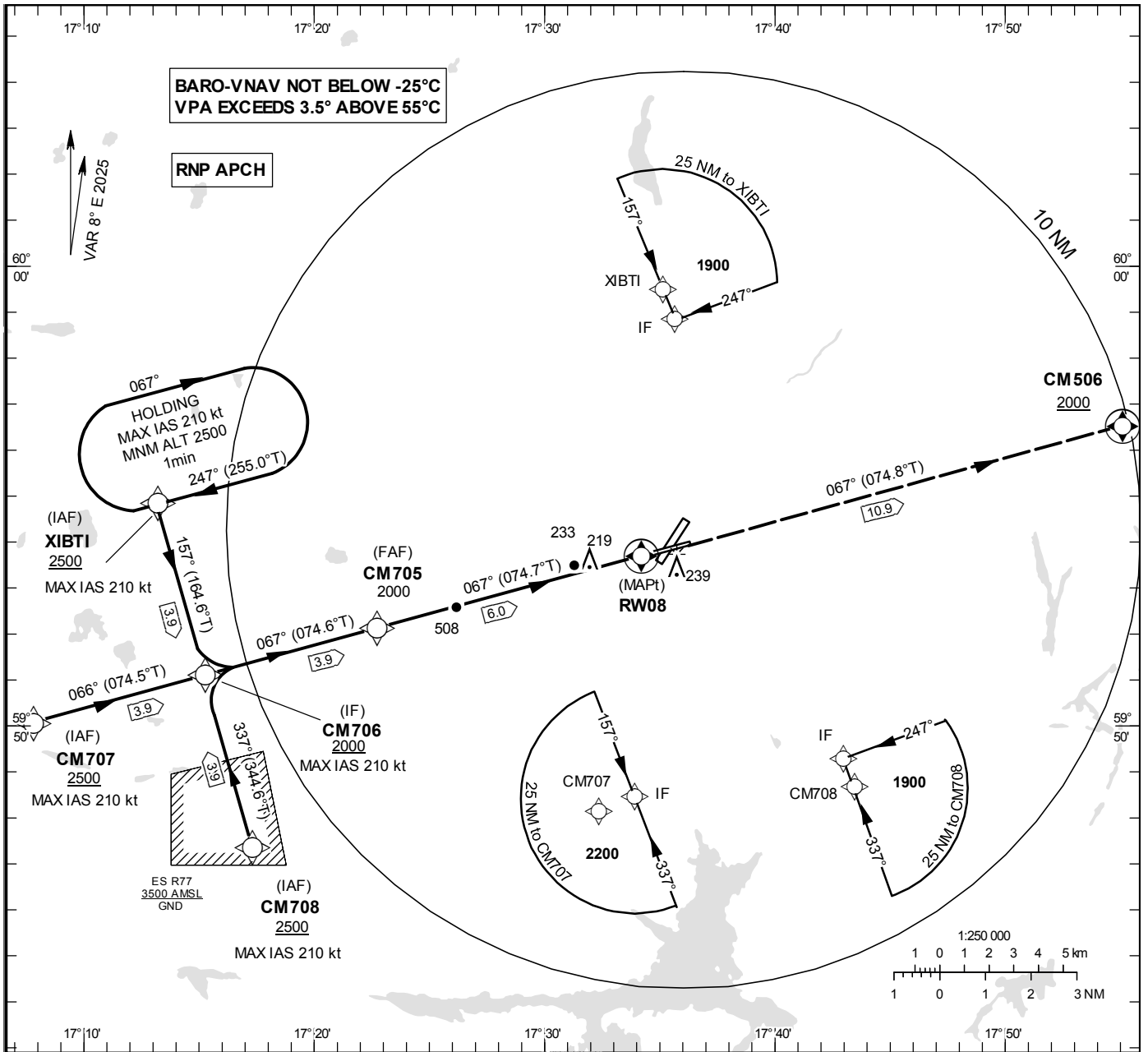
**INSTRUMENT  
APPROACH  
CHART – ICAO**

**THR ELEV 42 ft, AD ELEV 69 ft**  
 OCH are related to THR.  
 Circling OCH are related to AD ELEV.  
 BRG are MAG  
 ALT, HGT and ELEV in ft.

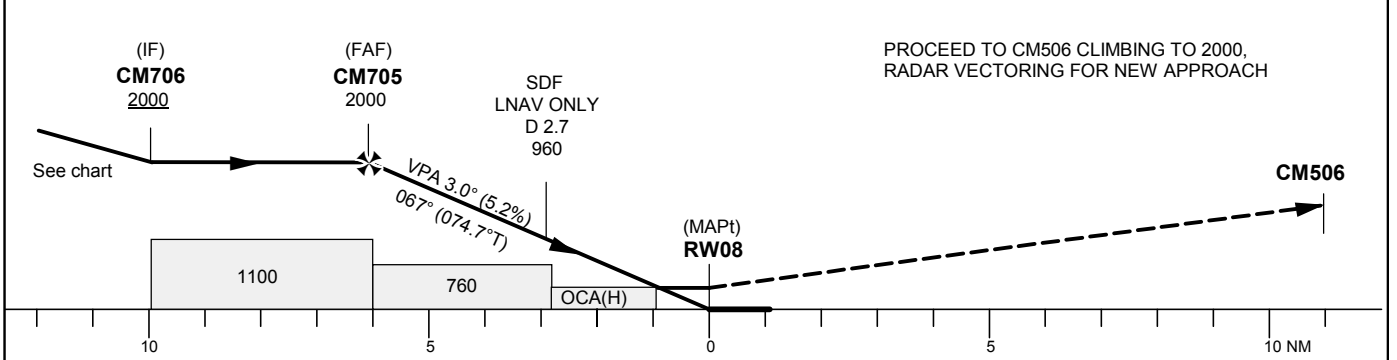
UPPSALA TOWER	119.200
UPPSALA APPROACH	130.400

**RNP RWY 08**

EGNOS CH 87393 E 08A



TA 5000 ft AMSL RDH 50.0 ft



Cat of ACFT	OCA (H)				Final approach		Distance FAF-MAPt 6.0 NM					
	A	B	C	D	Dist to RW08 (NM)	5	4	3	2	1	0	
LPV	350 (308)	362 (320)	370 (328)	381 (339)	ALT	1680	1370	1050	730			
LNAV/VNAV	350 (308)	362 (320)	370 (328)	396 (354)	GS	kt	80	100	120	140	160	180
LNAV	490 (450)				Rate of descent	ft/min	425	530	635	745	850	955

## RNP RWY 08 via CM708

Path Term	Waypoint Identifier	Fly-over	Course °M(°T)	Dist (NM)	Turn Dir	Rest Alts (ft AMSL)	Speed Limits (kt)	VPA/RDH (°/ft)	Rec Navaid	Navigation Specification
IF	CM708	-	-	-	-	+2500	-210	-	-	RNP APCH
TF	CM706	-	337°(344.6°)	3.9	-	+2000	-	-	-	RNP APCH

## RNP RWY 08 via XIBTI

Path Term	Waypoint Identifier	Fly-over	Course °M(°T)	Dist (NM)	Turn Dir	Rest Alts (ft AMSL)	Speed Limits (kt)	VPA/RDH (°/ft)	Rec Navaid	Navigation Specification
IF	XIBTI	-	-	-	-	+2500	-210	-	-	RNP APCH
TF	CM706	-	157° (164.6°)	3.9	-	+2000	-	-	-	RNP APCH

## RNP RWY 08 via CM707

Path Term	Waypoint Identifier	Fly-over	Course °M(°T)	Dist (NM)	Turn Dir	Rest Alts (ft AMSL)	Speed Limits (kt)	VPA/RDH (°/ft)	Rec Navaid	Navigation Specification
IF	CM707	-	-	-	-	+2500	-210	-	-	RNP APCH
TF	CM706	-	066° (074.5°)	3.9	-	+2000	-	-	-	RNP APCH

Path Term	Waypoint Identifier	Fly-over	Course °M(°T)	Dist (NM)	Turn Dir	Rest Alts (ft AMSL)	Speed Limits (kt)	VPA/RDH (°/ft)	Rec Navaid	Navigation Specification
IF	CM706	-	-	-	-	+2000	-210	-	-	RNP APCH
TF	CM705	-	067° (074.6°)	3.9	-	+2000	-	-	-	RNP APCH
TF	RW08	Y	067° (074.7°)	6.0	-	@92	-	-3.0/50	-	RNP APCH
TF	CM506	Y	067° (074.8°)	10.9	-	+2000	-	-	-	RNP APCH
VM	-	-	067°	-	-	-	-	-	-	RNP APCH

## RNP RWY 08 – Holding at XIBTI

Path Term	Waypoint Identifier	Fly-over	Course °M(°T)	Dist (NM)	Turn Dir	Rest Alts (ft AMSL)	Speed Limits (kt)	VPA/RDH (°/ft)	Rec Navaid	Navigation Specification
HM	XIBTI	Y	247° (255.0°)	-	R	+2500	-210	-	-	RNAV 1

## FAS Data Block

RNP RWY 08

## Input data

Operation Type	0
SBAS Provider	1
Airport Identifier	ESCM
Runway	08
Runway Direction	0
Approach Performance Designator	0
Route Indicator	
Reference Path Data Selector	0
Reference Path Identifier	E08A
LTP/FTP Latitude	595341.2045N
LTP/FTP Longitude	0173412.0110E
LTP/FTP Ellipsoidal Height (metres)	36.8
FPAP Latitude	595357.7805N
Delta FPAP Latitude (seconds)	16.5760
FPAP Longitude	0173613.8750E
Delta FPAP Longitude (seconds)	121.8640
Threshold Crossing Height	50.0
TCH Units Selector	0
Glidepath Angle (degrees)	3.00
Course Width (metres)	105.00
Length Offset (metres)	0
HAL (metres)	40.0
VAL (metres)	50.0

## Output data

Data Block	10 0D 03 13 05 08 00 00 01 38 30 05 A9 3C B4 19 56 4C 8A 07 70 15 80 81 00 10 B8 03 F4 01 2C 01 64 00 C8 FA 14 45 C3 7F
Calculated CRC Value	1445C37F

## Required Additional Data

ICAO Code	ES
LTP/FTP Orthometric Height (metres)	12.8
FPAP Orthometric Height (metres)	18.8