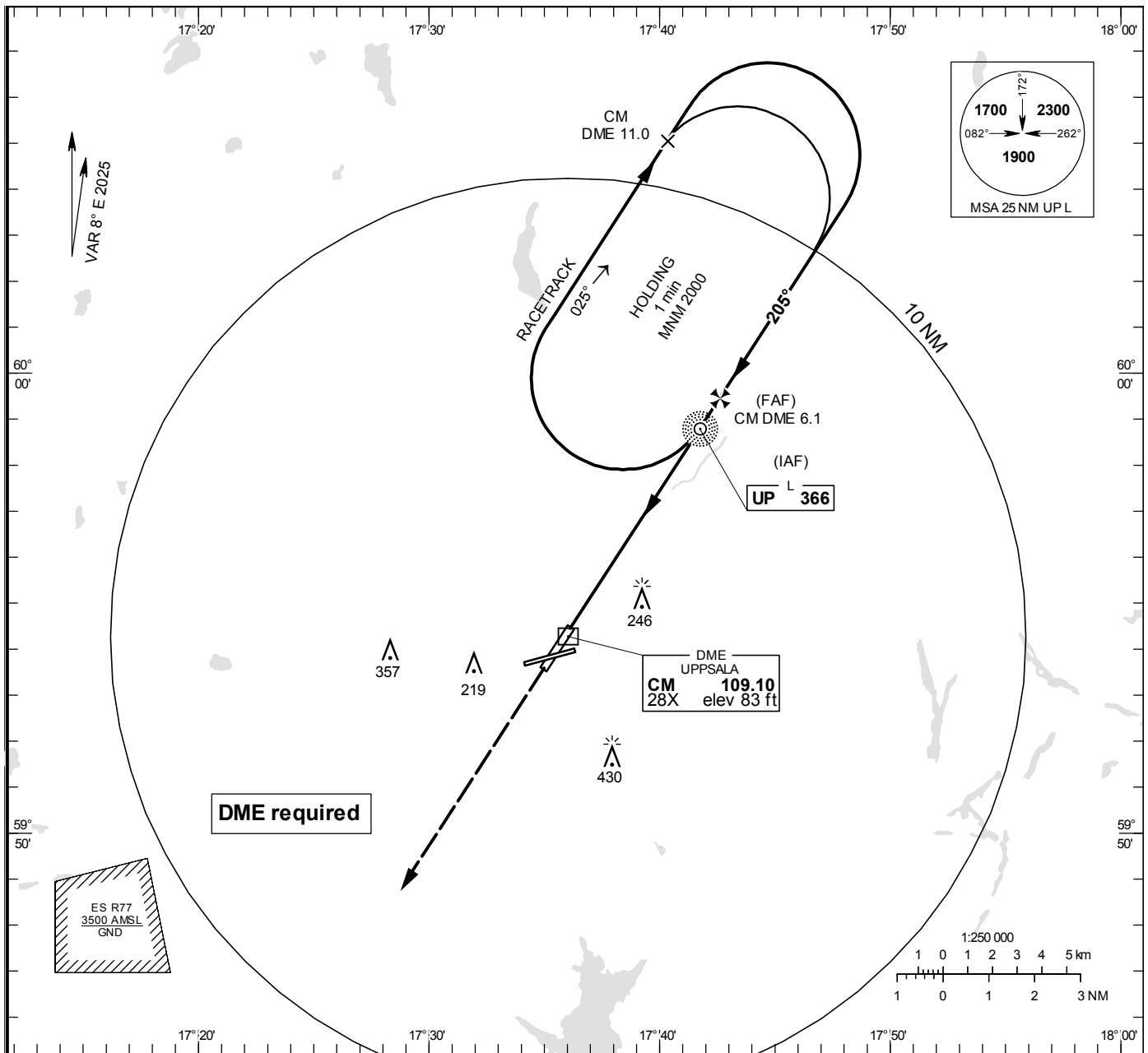


NDB RWY 21

UPPSALA TOWER	119.200
UPPSALA APPROACH	130.400

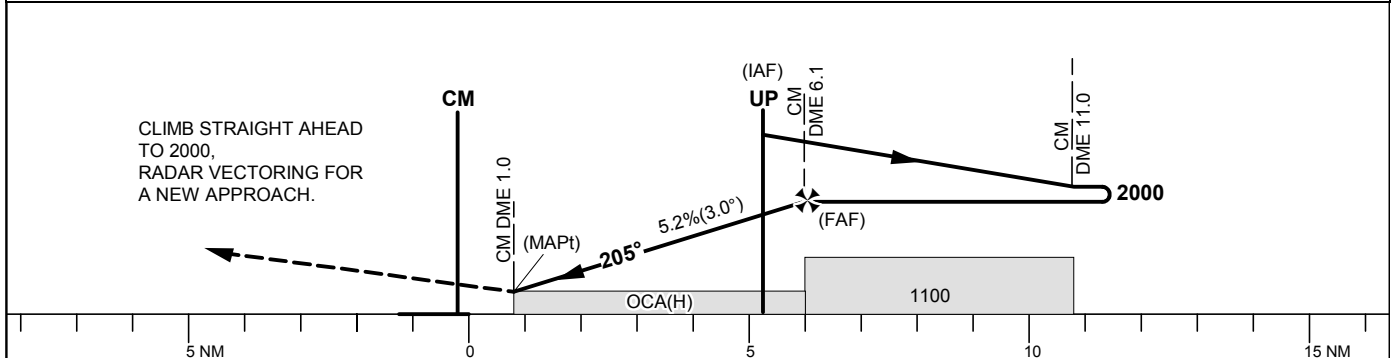
THR ELEV 68.0 ft, AD ELEV 69 ft  
 OCH are related to THR.  
 Circling OCH are related to AD ELEV.  
 BRG are MAG  
 ALT, HGT and ELEV in ft.

INSTRUMENT  
APPROACH  
CHART – ICAO



TA 5000 ft AMSL

\*Timing not authorized for defining the MAPt



Cat of ACFT	OCA (H)				Final approach Distance FAF-MAPt 5.1 NM*							
	A	B	C	D	DME CM NM	2	3	4	5	6		
Straight-in Approach	480 (420)				ALT	700	1010	1330	1640	1960		
Circling	550 (490)	730 (670)	830 (770)	830 (770)	GS	kt	80	100	120	140	160	180
					Time	min:s	3:50	3:04	2:33	2:11	1:55	1:42
Circling W RWY	520 (460)	520 (460)	760 (700)	760 (700)	Rate of descent	ft/min	420	525	630	735	845	950