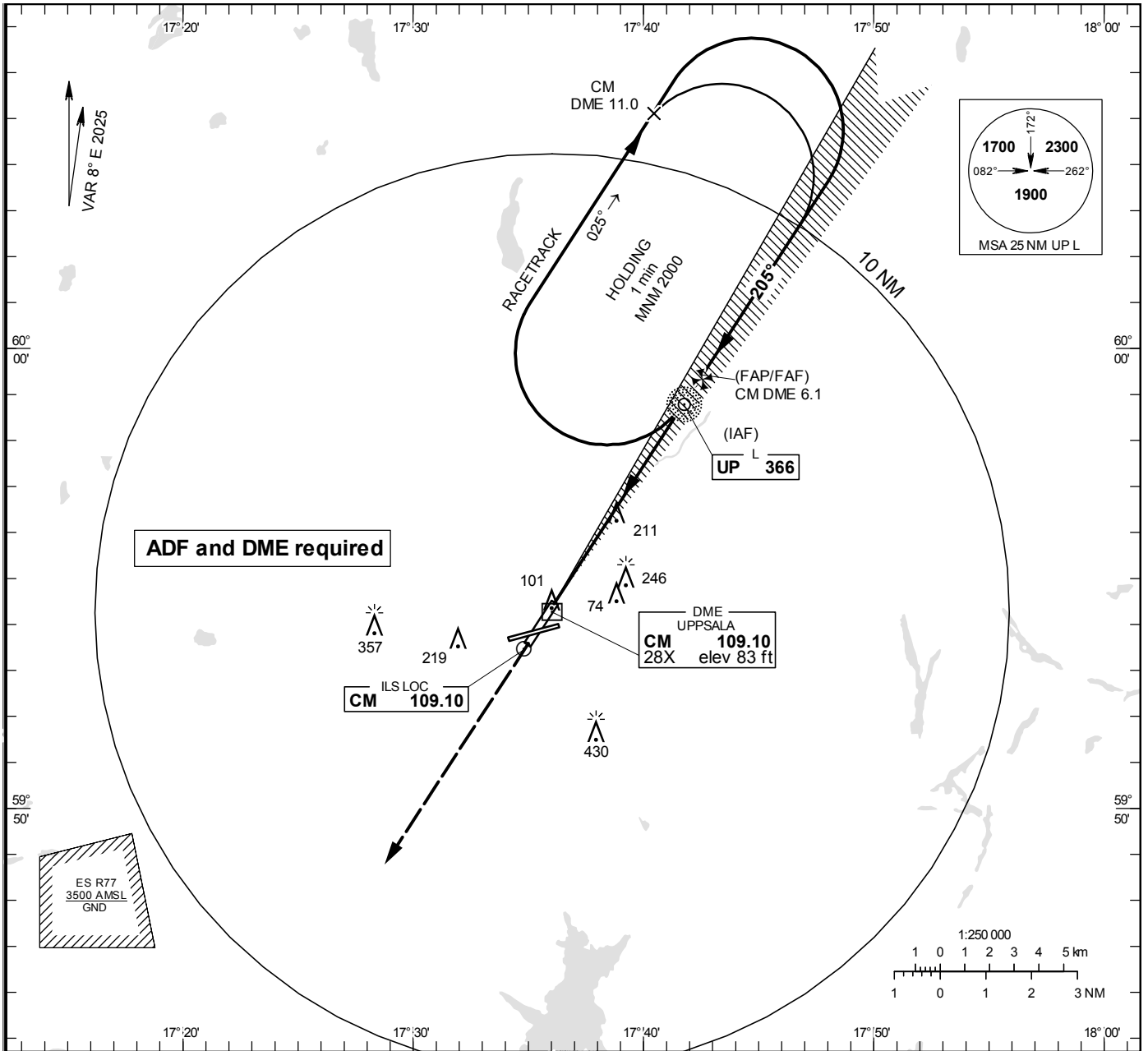


**INSTRUMENT APPROACH CHART – ICAO**

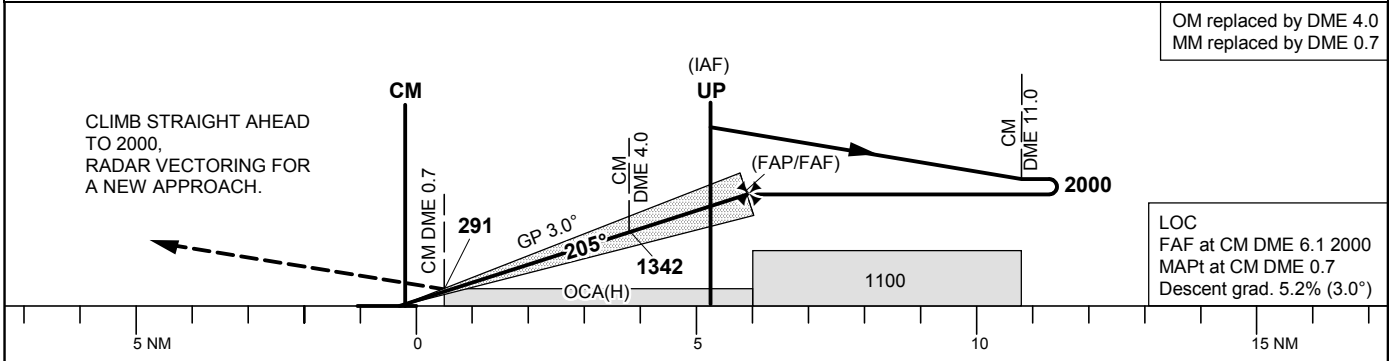
**THR ELEV 68.0 ft, AD ELEV 69 ft**  
 OCH are related to THR.  
 Circling OCH are related to AD ELEV.  
 BRG are MAG  
 ALT, HGT and ELEV in ft.

UPPSALA TOWER	119.200
UPPSALA APPROACH	130.400

**ILS or LOC RWY 21**



**TA 5000 ft AMSL RDH 54.5** \*Timing not authorized for defining the MAPt



Cat of ACFT	OCA (H)				Final approach DME CM NM	LOC Distance FAF-MAPt 5.4 NM*							
	A	B	C	D		2	3	4	5	6			
Straight-in Approach	Cat I	210 (142)	219 (151)	229 (161)	239 (171)	710	1020	1340	1660	1980			
	LOC	460 (400)				GS	kt	80	100	120	140	160	180
Circling		550 (490)	730 (670)	830 (770)	830 (770)	Time	min:s	4:02	3:13	2:41	2:18	2:01	1:47
Circling W RWY		520 (460)	520 (460)	760 (700)	760 (700)	Rate of descent	ft/min	425	530	635	745	850	955