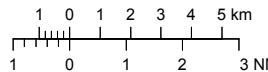


VISUAL APPROACH CHART - ICAO

1:250000



AD ELEV 309 FEET

ELEV and ALT in ft
HGT in ft above AD ELEV

TA 5000 AMSL

MALMEN TOWER

129.800 121.050 132.600

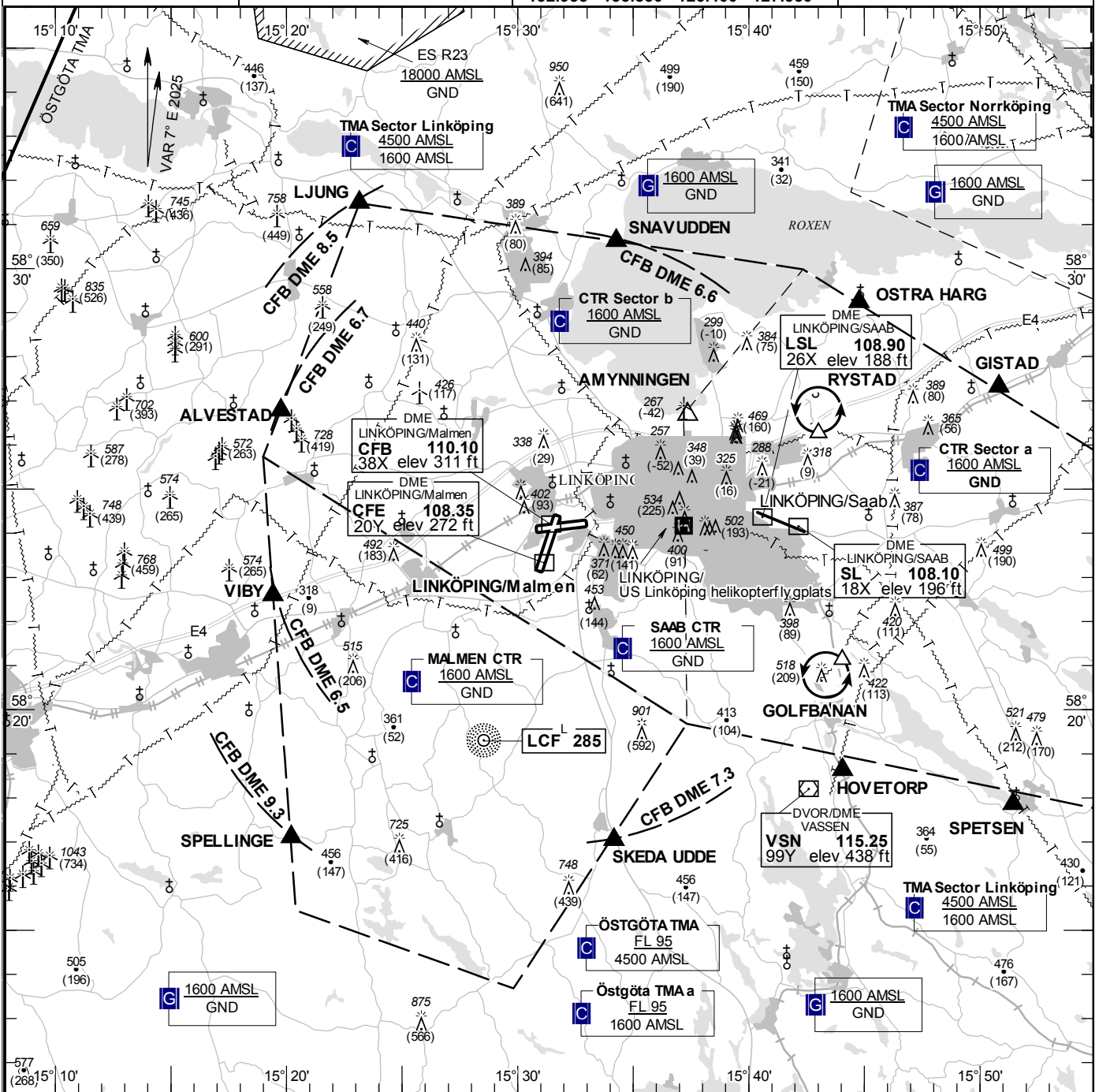
MALMEN GROUND 121.850

ÖSTGÖTA APPROACH

132.955 135.850 126.400 127.350

AD 2 ESCF 6-1

LINKÖPING/Malmen SWEDEN



Communication failure

Traffic with Communication failure is not allowed to enter Malmen CTR. In case of communication failure proceed to SAAB/Linköping and follow Communication failure instruction for SAAB/Linköping.

RWY NR	THR ELEV	PAPI (MEHT)
01	250.7 ft	Left/3.00° (53 ft)
19	295.4 ft	Left/3.20° (53 ft)
08	309 ft	NIL
26	278 ft	NIL

Entry / exit point

LJUNG	583129N 0152309E
SNVUDDEN	583037N 0153416E
SKEDA UDDE	581702N 0153410E
SPELLINGE	581706N 0152012E
VIBY	582235N 0151925E
ALVESTAD	582646N 0151945E

Remark

NIL

Legend

See GEN 2.3

Reporting point

AMYNNINGEN	582640N 0153721E
------------	------------------

Holding

NIL

LFV

CHANGE: OBST

AIRAC AMDT 2/2024 **21 MAR 2024**