

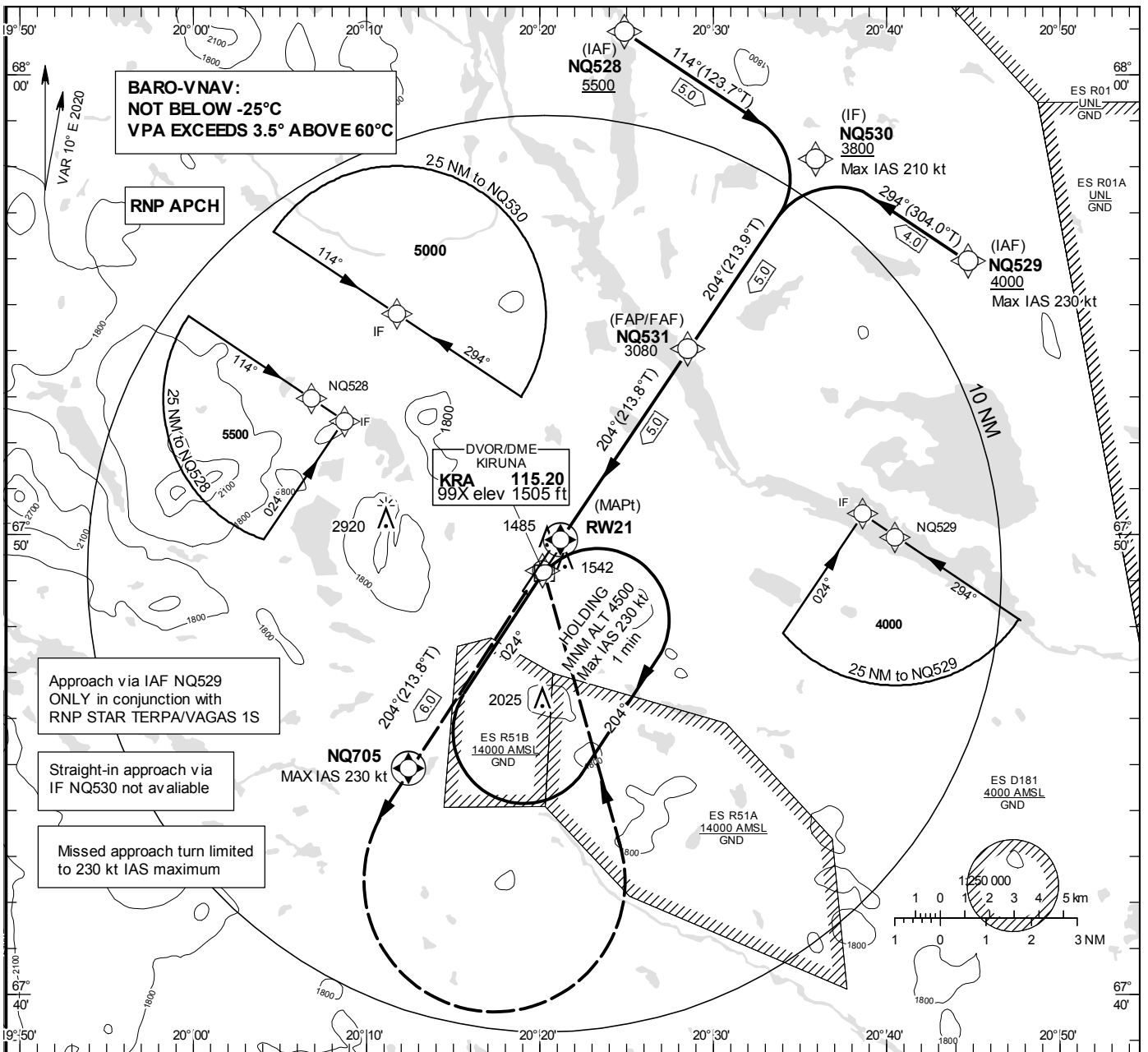
INSTRUMENT APPROACH CHART – ICAO

THR ELEV 1432.3 ft, AD ELEV 1509 ft
 OCH are related to THR.
 BRG are MAG (True).
 ALT, HGT and ELEV in ft.

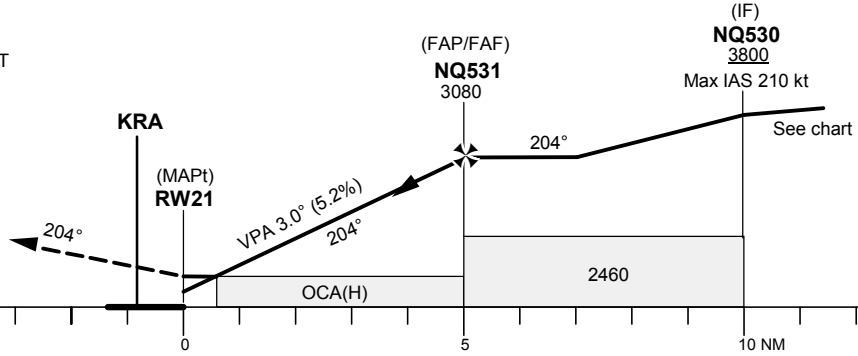
KIRUNA TOWER 130.155

RNP RWY 21

EGNOS Ch 67099 E 21A



CLIMB TO NQ705.
 TURN LEFT (MAX IAS 230 kt) DIRECT TO KRA CLIMBLING TO 4500 FT AND JOIN KRA HOLDING.



RNP RWY 21 via NQ528

Path Desc	Waypoint Identifier	Fly-over	Course °M(°T)	Dist (NM)	Turn Dir	Altitude	Speed	VPA/RDH	Rec Navaid	Navigation Specification
IF	NQ528	-	-	-	-	+5500	-	-	-	RNP APCH
TF	NQ530	-	114°(123.7°)	5.0	-	+3800	-210	-	-	RNP APCH

RNP RWY 21 via NQ529

Path Desc	Waypoint Identifier	Fly-over	Course °M(°T)	Dist (NM)	Turn Dir	Altitude	Speed	VPA/RDH	Rec Navaid	Navigation Specification
IF	NQ529	-	-	-	-	+4000	-230	-	-	RNP APCH
TF	NQ530	-	294°(304.0°)	4.0	-	+3800	-210	-	-	RNP APCH

Path Desc	Waypoint Identifier	Fly-over	Course °M(°T)	Dist (NM)	Turn Dir	Altitude	Speed	VPA/RDH	Rec Navaid	Navigation Specification
IF	NQ530	-	-	-	-	+3800	-	-	-	RNP APCH
TF	NQ531	-	204°(213.9°)	5.0	-	@3080	-	-	-	RNP APCH
TF	RW21	Y	204°(213.8°)	5.0	-	@1482	-	-3.0/50	-	RNP APCH
TF	NQ705	Y	204°(213.8°)	6.0	-	-	-	-	-	RNP APCH
DF	KRA	Y	-	-	L	-	-230	-	-	RNP APCH
HM	KRA	-	024°(034.0°)	-	R	+4500	-230	-	-	RNP 1

FAS Data Block

RNP RWY 21

Input data

Operation Type	0
SBAS Provider	1 (EGNOS)
Airport Identifier	ESNQ
Runway	21
Runway Letter	0 (None)
Approach Performance Designator	0
Route Indicator	
Reference Path Data Selector	0
Reference Path Identifier	E21A
LTP/FTP Latitude	674952.7500N
LTP/FTP Longitude	0202111.5900E
LTP/FTP Ellipsoidal Height (metres)	466.1
FPAP Latitude	674841.9885N
Delta FPAP Latitude (seconds)	-70.7615
FPAP Longitude	0201906.8455E
Delta FPAP Longitude (seconds)	-124.7445
Threshold Crossing Height	50.0
TCH Units Selector	0 (feet)
Glidepath Angle (degrees)	3.00
Course Width (metres)	105.00
Length Offset (metres)	128
HAL (metres)	40.0
VAL (metres)	35.0

Output data

Data Block	10 11 0E 13 05 15 00 00 01 31 32 05 DC 2B 1C 1D 4C 12 BC 08 35 26 2D D7 FD 6F 31 FC F4 01 2C 01 64 10 C8 AF F7 83 AB 73
Calculated CRC Value	F783AB73
Supplied CRC Value	F783AB73
Comparison Result	OK