

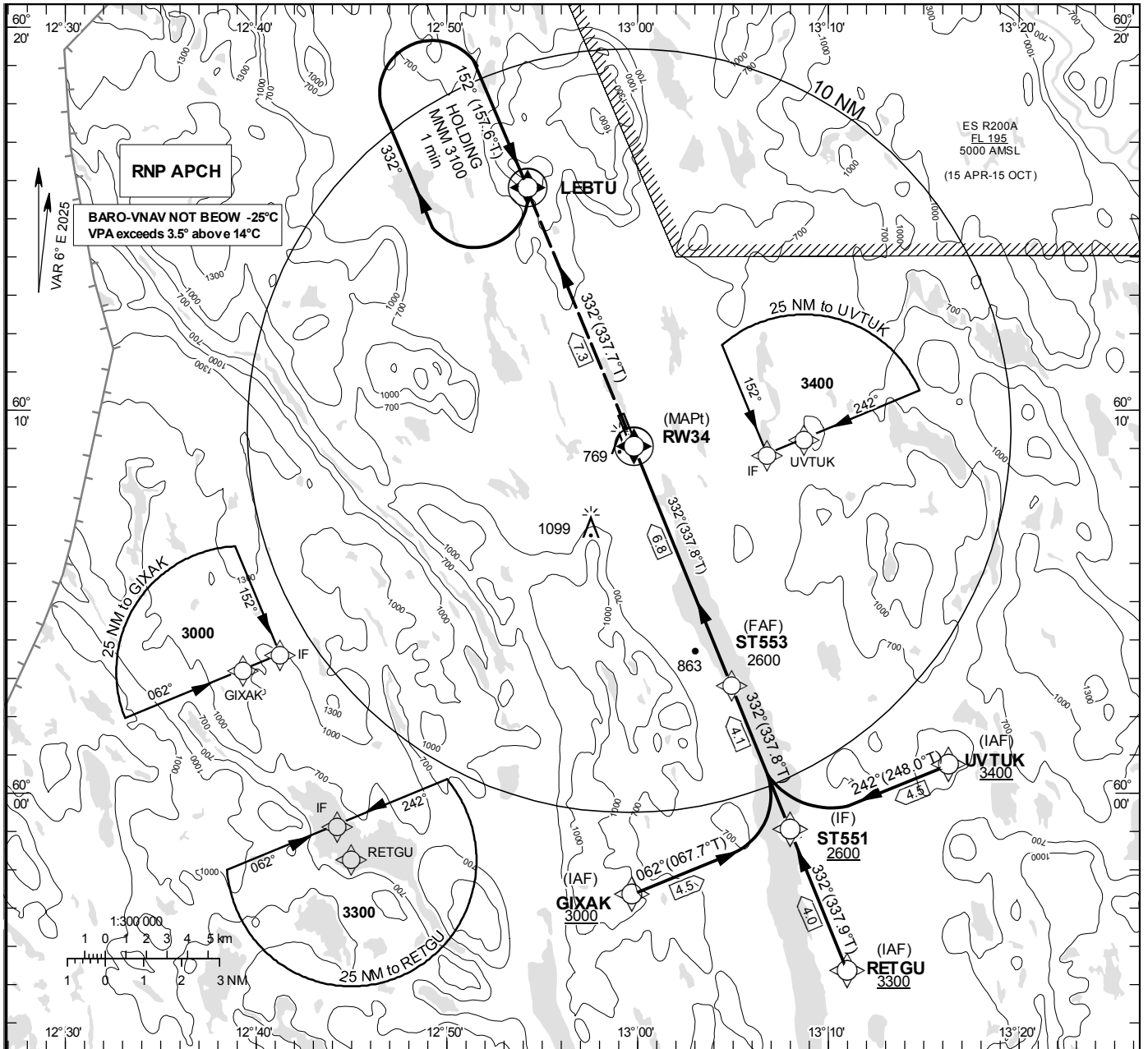
**INSTRUMENT
APPROACH
CHART – ICAO**

THR ELEV 394 ft, AD ELEV 394 ft
 OCH are related to THR.
 Circling OCH are related to AD ELEV
 BRG are MAG (True).
 ALT. HGT and ELEV in ft.

TORSBY INFORMATION 122.055

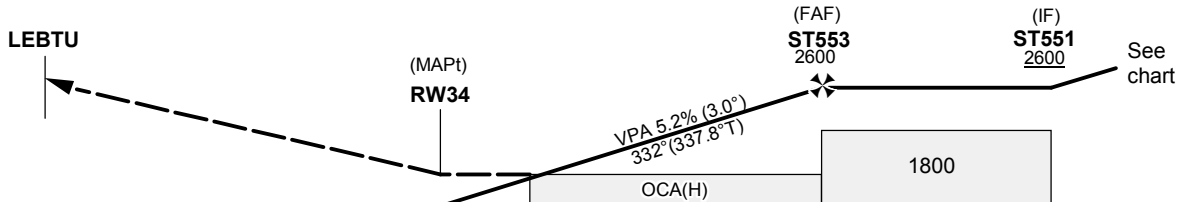
RNP RWY 34

EGNOS Ch 41224 E 34A



TA 5000 ft AMSL RDH 50 ft

DIRECT TO LEBTU CLIMBING
TO 3100 AND JOIN LEBTU HOLDING



	OCA (H)		Final approach	Distance FAF-MAPt 6.8 NM				
Cat of AFCT	A	B	Dist to RW 34	2	3	4	5	6
LPV	899 (505)	911 (517)	ALT	1080	1400	1720	2040	2350
LNAV/VNAV	899 (505)	911 (517)	GS	kt	80	100	120	140
LNAV	1020 (630)		Rate of descent	ft/min	425	530	635	745
Circling	1070 (680)	1400 (1010)						

LFV

CHANGE: VAR, obst, MNM ALT at ST551, holding MNM ALT, MOCA, FAF new, OCA(H),
Baro-VNAV new, circling new, missed apch, table, coding, editorial.

AIRAC AMDT 1/2024

RNP RWY 34 via GIXAK

Path Desc	Waypoint Identifier	Fly-over	Course °M(°T)	Dist (NM)	Turn Dir	Altitude	Speed	VPA/RDH	Rec Navaid	Navigation Specification
IF	GIXAK	-	-	-	-	+3000	-	-	-	RNP APCH
TF	ST551	-	062°(067.7°)	4.5	-	+2600	-	-	-	RNP APCH

RNP RWY 34 via RETGU

Path Desc	Waypoint Identifier	Fly-over	Course °M(°T)	Dist (NM)	Turn Dir	Altitude	Speed	VPA/RDH	Rec Navaid	Navigation Specification
IF	RETGU	-	-	-	-	+3300	-	-	-	RNP APCH
TF	ST551	-	332°(337.9°)	4.0	-	+2600	-	-	-	RNP APCH

RNP RWY 34 via UVTUK

Path Desc	Waypoint Identifier	Fly-over	Course °M(°T)	Dist (NM)	Turn Dir	Altitude	Speed	VPA/RDH	Rec Navaid	Navigation Specification
IF	UVTUK	-	-	-	-	+3400	-	-	-	RNP APCH
TF	ST551	-	242°(248.0°)	4.5	-	+2600	-	-	-	RNP APCH

Path Desc	Waypoint Identifier	Fly-over	Course °M(°T)	Dist (NM)	Turn Dir	Altitude	Speed	VPA/RDH	Rec Navaid	Navigation Specification
IF	ST551	-	-	-	-	+2600	-	-	-	RNP APCH
TF	ST553	-	332°(337.8°)	4.1	-	@2600	-	-	-	RNP APCH
TF	RW34	Y	332°(337.8°)	6.8	-	@444	-	-3.0/50	-	RNP APCH
DF	LEBTU	Y	332°(337.7°)	7.3	-	-	-	-	-	RNP APCH

ESST Holding LEBTU

Path Desc	Waypoint Identifier	Fly-over	Course °M(°T)	Dist (NM)	Turn Dir	Altitude	Speed	VPA/RDH	Rec Navaid	Navigation Specification
HM	LEBTU	Y	152°(157.6°)	-	R	+3100	-	-	-	RNP 1

FAS Data Block

RNP RWY 34

Input data

Operation Type	0
SBAS Provider	1 (EGNOS)
Airport Identifier	ESST
Runway	34
Runway Letter	0 (None)
Approach Performance Designator	0
Route Indicator	
Reference Path Data Selector	0
Reference Path Identifier	E34A
LTP/FTP Latitude	600902.7725N
LTP/FTP Longitude	0125948.8515E
LTP/FTP Ellipsoidal Height (metres)	152.4
FPAP Latitude	600952.5795N
Delta FPAP Latitude (seconds)	49.8070
FPAP Longitude	0125907.8925E
Delta FPAP Longitude (seconds)	-40.9590
Threshold Crossing Height	50.0
TCH Units Selector	0 (feet)
Glidepath Angle (degrees)	3.00
Course Width (metres)	105.00
Length Offset (metres)	72
HAL (metres)	40.0
VAL (metres)	50.0

Output data

Data Block	10 14 13 13 05 22 00 00 01 34 33 05 69 5C D0 19 E7 E1 93 05 F4 19 1E 85 01 02 C0 FE F4 01 2C 01 64 09 C8 FA 99 7C E5 7C
Calculated CRC Value	997CE57C

Required Additional Data

ICAO Code	ES
LTP/FTP Orthometric Height (metres)	120.0