

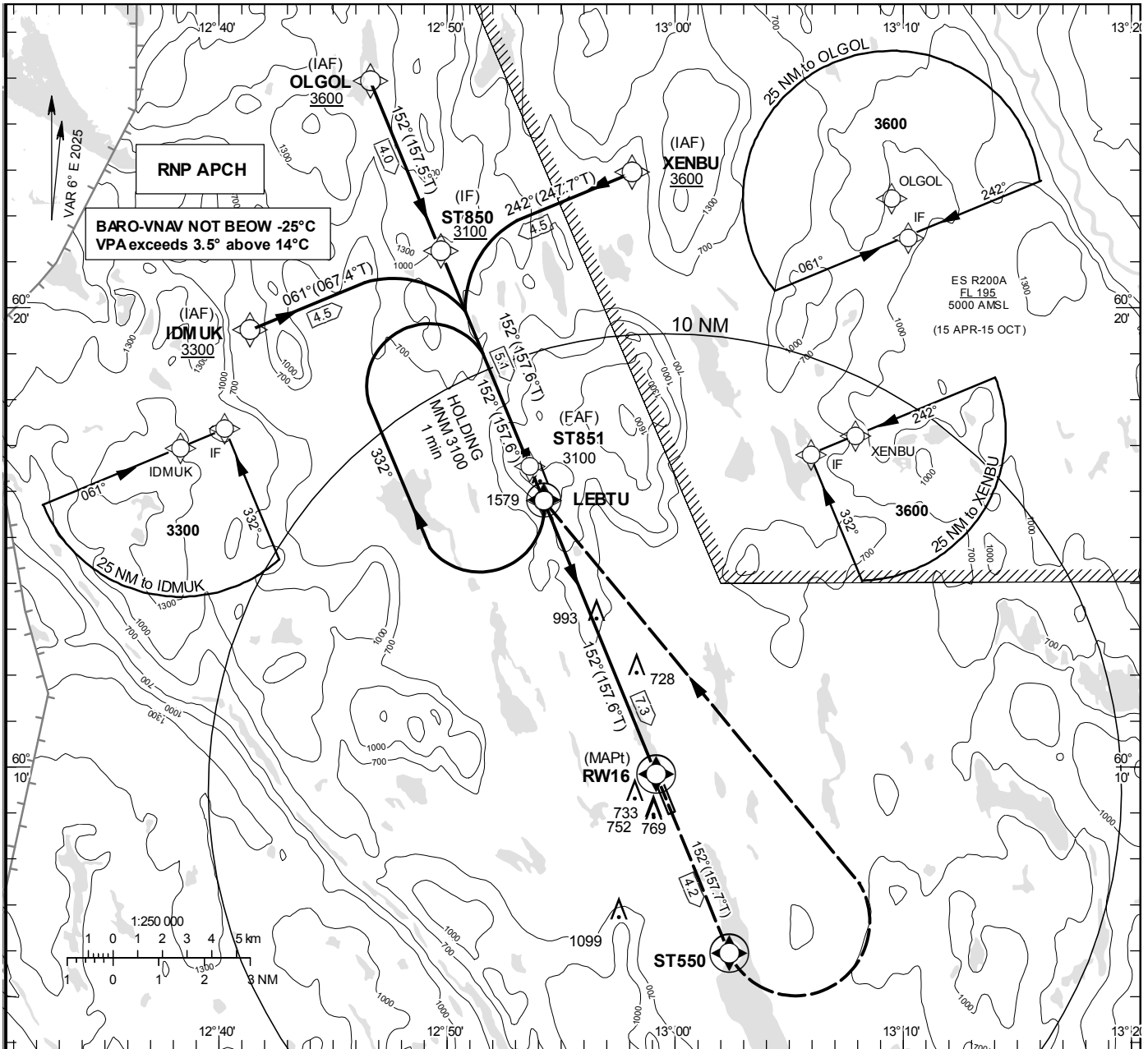
**INSTRUMENT  
APPROACH  
CHART – ICAO**

THR ELEV 350 ft, AD ELEV 394 ft  
 OCH are related to THR.  
 Circling OCH are related to AD ELEV  
 BRG are MAG (True).  
 ALT. HGT and ELEV in ft.

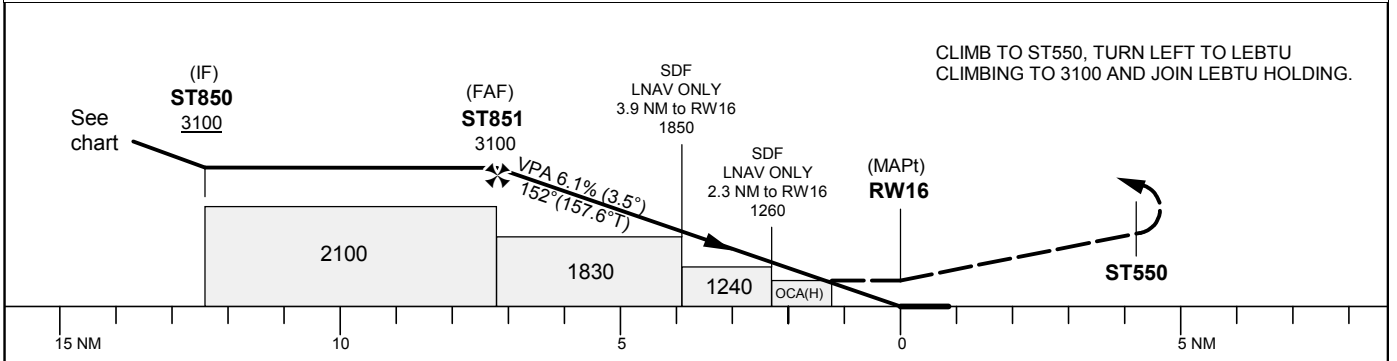
TORSBY INFORMATION 122.055

RNP RWY 16

EGNOS Ch 59910 E 16A



TA 5000 ft AMSL RDH 50 ft



Cat of ACFT	OCA (H)		Final approach Dist to RW 16	Distance FAF-MAPt 7.3 NM					
	A	B		7	6	5	4	3	2
LPV	889 (539)	905 (555)	ALT	3000	2630	2260	1890	1510	1140
LNAV/VNAV	849 (499)	862 (512)	GS	kt	80	100	120	140	
LNAV	980 (630)		Rate of descent	ft/min	495	620	745	865	
Circling	1070 (680)	1400 (1010)							

LFV

CHANGE: VAR, obst, TAA to XENBU, MNM ALT at XENBU and ST850, holding MNM ALT, AIRAC AMDT 1/2024  
 MOCA, FAF new, SDFs, OCA(H), Baro-VNAV new, circling new, missed apch, table, coding, editorial.

## RNP RWY 16 via XENBU

Path Desc	Waypoint Identifier	Fly-over	Course °M(°T)	Dist (NM)	Turn Dir	Altitude	Speed	VPA/RDH	Rec Navaid	Navigation Specification
IF	XENBU	-	-	-	-	+3600	-	-	-	RNP APCH
TF	ST850	-	242°(247.7°)	4.5	-	+3100	-	-	-	RNP APCH

## RNP RWY 16 via OLGOL

Path Desc	Waypoint Identifier	Fly-over	Course °M(°T)	Dist (NM)	Turn Dir	Altitude	Speed	VPA/RDH	Rec Navaid	Navigation Specification
IF	OLGOL	-	-	-	-	+3600	-	-	-	RNP APCH
TF	ST850	-	152°(157.5°)	4.0	-	+3100	-	-	-	RNP APCH

## RNP RWY 16 via IDMUK

Path Desc	Waypoint Identifier	Fly-over	Course °M(°T)	Dist (NM)	Turn Dir	Altitude	Speed	VPA/RDH	Rec Navaid	Navigation Specification
IF	IDMUK	-	-	-	-	+3300	-	-	-	RNP APCH
TF	ST850	-	061°(067.4°)	4.5	-	+3100	-	-	-	RNP APCH

Path Desc	Waypoint Identifier	Fly-over	Course °M(°T)	Dist (NM)	Turn Dir	Altitude	Speed	VPA/RDH	Rec Navaid	Navigation Specification
IF	ST850	-	-	-	-	+3100	-	-	-	RNP APCH
TF	ST851	-	152°(157.6°)	5.1	-	@3100	-	-	-	RNP APCH
TF	RW16	Y	152°(157.6°)	7.3	-	@400	-	-3.5/50	-	RNP APCH
TF	ST550	Y	152°(157.7°)	4.2	-	-	-	-	-	RNP APCH
DF	LEBTU	Y	-	-	L	+3100	-	-	-	RNP APCH

## ESST Holding LEBTU

Path Desc	Waypoint Identifier	Fly-over	Course °M(°T)	Dist (NM)	Turn Dir	Altitude	Speed	VPA/RDH	Rec Navaid	Navigation Specification
HM	LEBTU	Y	152°(157.6°)	-	R	+3100	-	-	-	RNP 1

## FAS Data Block

## RNP RWY 16

## Input data

Operation Type	0
SBAS Provider	1 (EGNOS)
Airport Identifier	ESST
Runway	16
Runway Letter	0 (None)
Approach Performance Designator	0
Route Indicator	
Reference Path Data Selector	0
Reference Path Identifier	E16A
LTP/FTP Latitude	600950.3095N
LTP/FTP Longitude	0125909.7540E
LTP/FTP Ellipsoidal Height (metres)	139.2
FPAP Latitude	600902.7725N
Delta FPAP Latitude (seconds)	-47.5370
FPAP Longitude	0125948.8515E
Delta FPAP Longitude (seconds)	39.0975
Threshold Crossing Height	50.0
TCH Units Selector	0 (feet)
Glidepath Angle (degrees)	3.50
Course Width (metres)	105.00
Length Offset (metres)	0
HAL (metres)	40.0
VAL (metres)	50.0

## Output data

Data Block	10 14 13 13 05 10 00 00 01 36 31 05 CB CF D1 19 74 B0 92 05 70 19 9E 8C FE 73 31 01 F4 01 5E 01 64 00 C8 FA AC 1A 42 CE
Calculated CRC Value	AC1A42CE

## Required Additional Data

ICAO Code	ES
LTP/FTP Orthometric Height (metres)	106.8