

VISUAL APPROACH CHART - ICAO

1:250000

1 0 1 2 3 4 5 km

1 0 1 2 3 NM

AD ELEV 474 FEET

ELEV and ALT in ft
HGT in ft above AD ELEV

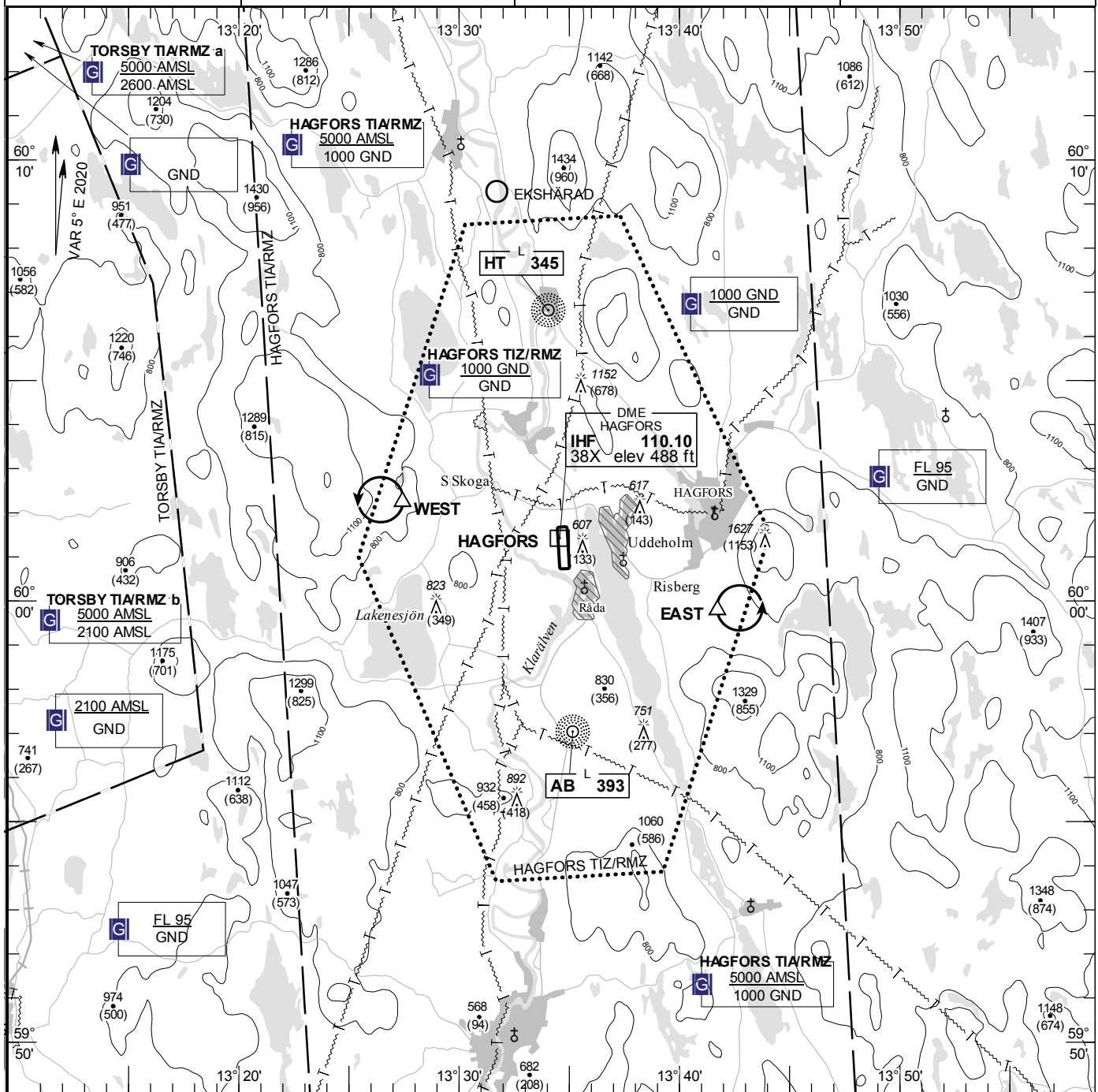
TA 5000 AMSL

HAGFORS INFORMATION

122.230

AD 2 ESOH 6-1

HAGFORS SWEDEN



Communication failure

NIL

Remark

Note: Overflight of Råda (SE end RWY 18) and Uddeholm should be avoided.

RWY NR	THR ELEV	PAPI (MEHT)
18	474.3 ft	Left/3.00° (50 ft)
36	469 ft	Left/3.00° (22 ft)

Legend

See GEN 2.3

Entry / exit point

NIL

Holding

EAST: Hold south of Hagfors and east of Risberg, east of point 595947N 0134144E

WEST: Hold north of lake Lakenesjön and west of road intersection at Södra Skoga, west of point 600216N 0132727E