

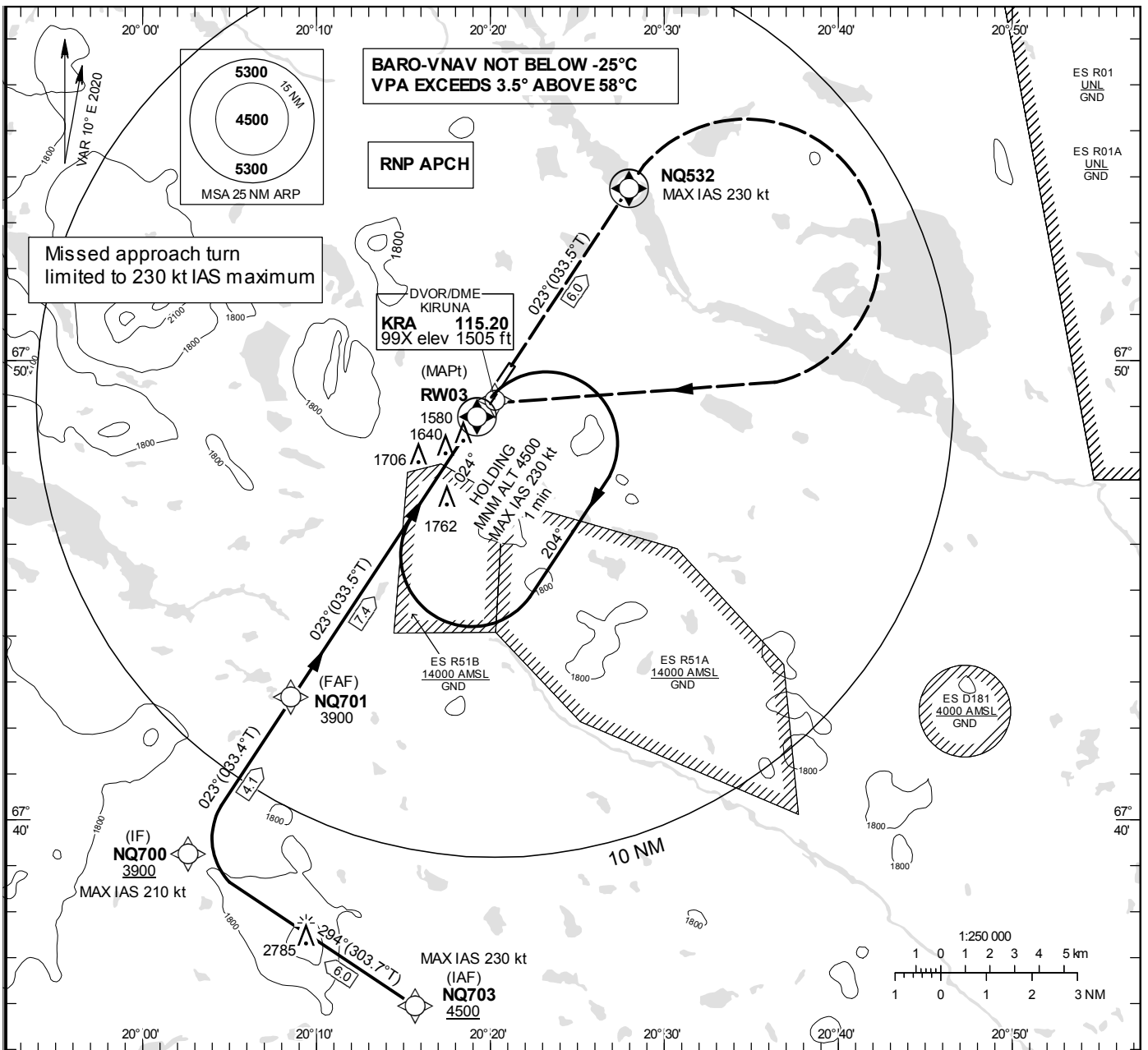
**INSTRUMENT APPROACH CHART – ICAO**

**THR ELEV 1509 ft, AD ELEV 1509 ft**  
 OCH are related to THR.  
 BRG are MAG (True).  
 ALT, HGT and ELEV in ft.

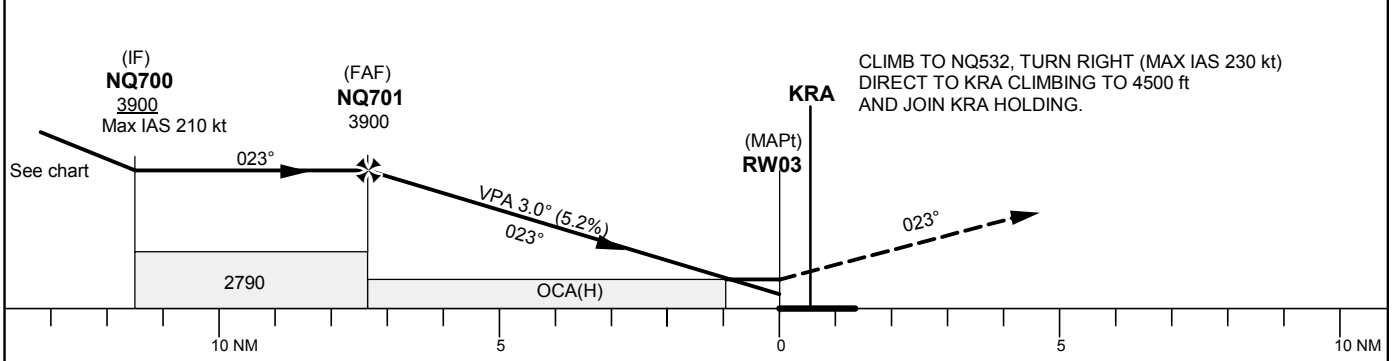
KIRUNA TOWER 130.155

**RNP RWY 03**

**EGNOS Ch 94840 E 03A**



TA 6000 ft AMSL RDH 50 ft



Cat of ACFT	OCA (H)				Final approach	Distance FAF-MAPt 7.4 NM						
	A	B	C	D	Dist to RW03 (NM)	7	6	5	4	3	2	
LPV	1716 (207)	1726 (217)	1797 (288)	1806 (297)	ALT (ft)	3788	3469	3151	2832	2514	2195	
LNAV/VNAV	1842 (333)	1852 (343)	1862 (353)	1872 (363)	GS	kt	80	100	120	140	160	180
LNAV	2020 (520)				Rate of descent	ft/min	425	530	635	745	850	955

## RNP RWY 03 via NQ703

Path Desc	Waypoint Identifier	Fly-over	Course °M(°T)	Dist (NM)	Turn Dir	Altitude	Speed	VPA/RDH	Rec Navaid	Navigation Specification
IF	NQ703	-	-	-	-	+4500	-230	-	-	RNP APCH
TF	NQ700	-	294°(303.7°)	6.0	-	-	-210	-	-	RNP APCH
TF	NQ701	-	023°(033.4°)	4.1	R	@3900	-	-	-	RNP APCH
TF	RW03	Y	023°(033.5°)	7.4	-	@1559	-	-3.0/50	-	RNP APCH
TF	NQ532	Y	023°(033.5°)	6.0	-	-	-	-	-	RNP APCH
DF	KRA	Y	-	-	R	-	-230	-	-	RNP APCH
HM	KRA	-	024°(034.0°)	-	R	+4500	-230	-	-	RNP 1

## FAS Data Block

## RNP RWY 03

## Input data

Operation Type	0
SBAS Provider	1 (EGNOS)
Airport Identifier	ESNQ
Runway	03
Runway Letter	0 (None)
Approach Performance Designator	0
Route Indicator	
Reference Path Data Selector	0
Reference Path Identifier	E03A
LTP/FTP Latitude	674845.5400N
LTP/FTP Longitude	0201913.1000E
LTP/FTP Ellipsoidal Height (metres)	489.8
FPAP Latitude	674952.7500N
Delta FPAP Latitude (seconds)	67.2100
FPAP Longitude	0202111.5900E
Delta FPAP Longitude (seconds)	118.4900
Threshold Crossing Height	50.0
TCH Units Selector	0 (feet)
Glidepath Angle (degrees)	3.00
Course Width (metres)	105.00
Length Offset (metres)	0
HAL (metres)	40.0
VAL (metres)	50.0

## Output data

Data Block	10 11 0E 13 05 03 00 00 01 33 30 05 C8 1E 1A 1D 98 74 B8 08 22 27 14 0D 02 B4 9D 03 F4 01 2C 01 64 00 C8 FA 7E BE B6 CC
Calculated CRC Value	7EBEB6CC
Supplied CRC Value	7EBEB6CC
Comparison Result	OK