

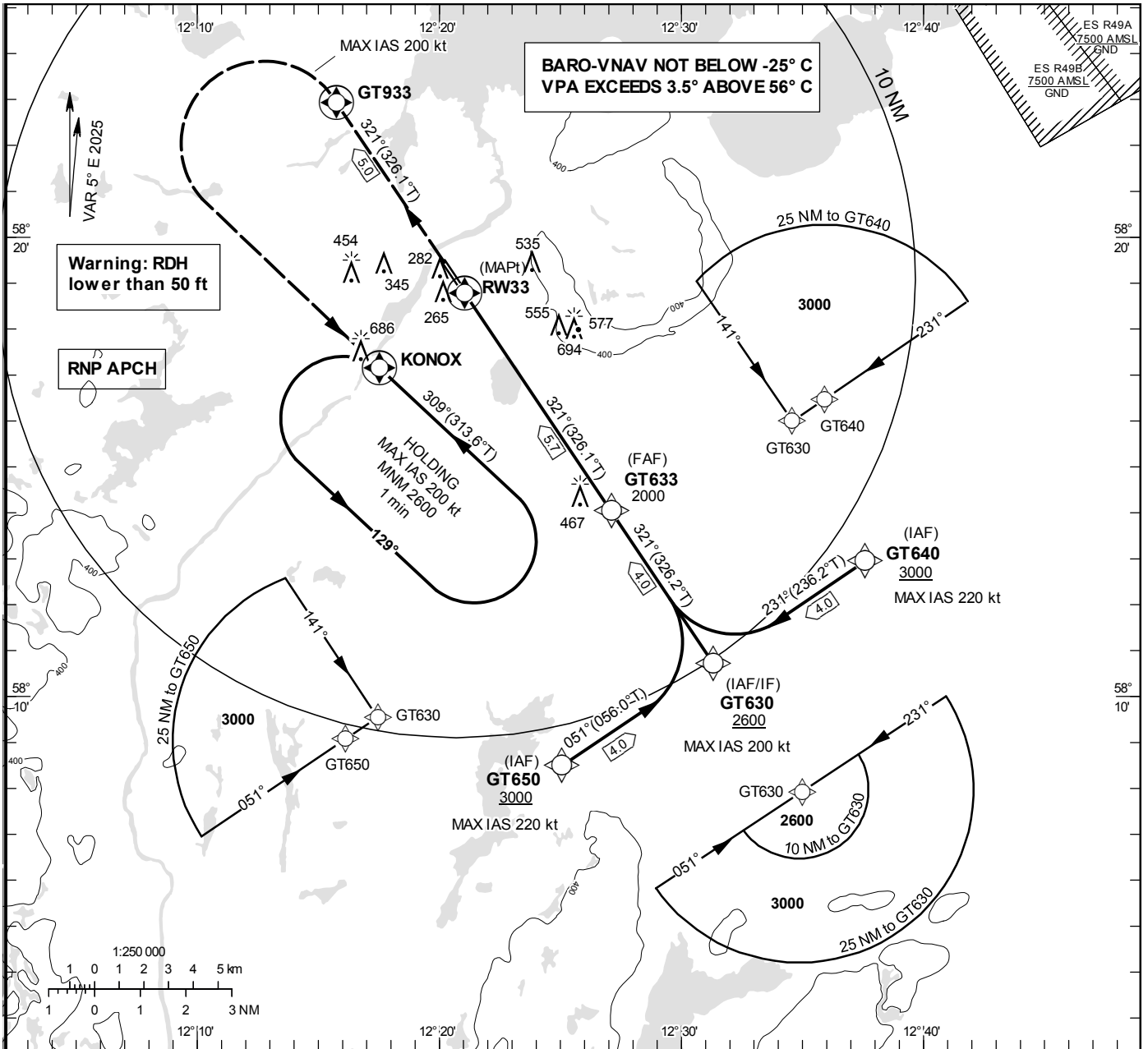
INSTRUMENT APPROACH CHART – ICAO

THR ELEV 134.8 ft, AD ELEV 137 ft
 OCH are related to THR.
 BRG are MAG (True).
 ALT, HGT and ELEV in ft.

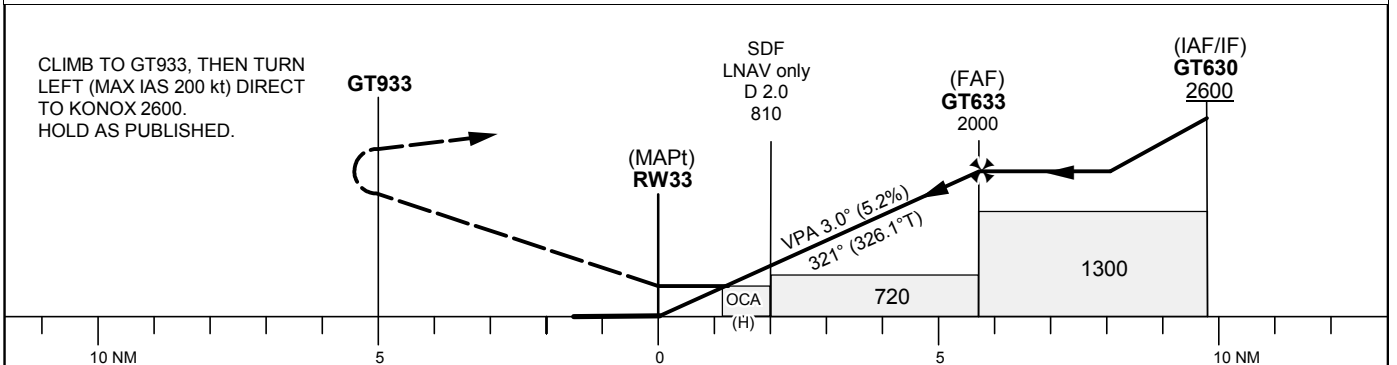
TROLLHÄTTAN TOWER 122.730

RNP RWY 33

EGNOS Ch 57705 E 33A



TA 5000 ft AMSL RDH 40 ft



Cat of ACFT	OCA (H)			Final approach						
	A	B	C	Dist to RWY33	Distance FAF-MAPT 5.7 NM					
LPV	413 (279)	425 (291)	433 (299)	ALT	810	1130	1450	1770		
LNAV/VNAV	395 (261)	408 (274)	433 (299)	GS	kt	80	100	120	140	160
LNAV		520 (390)		Rate of descent	ft/min	425	530	635	745	850
Circling	830 (700)	880 (750)	1090 (960)							
Circling SW RWY	650 (520)	750 (620)	1080 (950)							

RNP RWY33 Via GT640

Path Desc	Waypoint Identifier	Fly-over	Course °M(°T)	Dist (NM)	Turn Dir	Altitude (ft)	Speed	VPA/RDH	Rec Navaid	Navigation Specification
IF	GT640	-	-	-	-	+3000	-220	-	-	RNP APCH
TF	GT630	-	231° (236.2°)	4.0	-	-	-	-	-	RNP APCH

RNP RWY33 Via GT650

Path Desc	Waypoint Identifier	Fly-over	Course °M(°T)	Dist (NM)	Turn Dir	Altitude (ft)	Speed	VPA/RDH	Rec Navaid	Navigation Specification
IF	GT650	-	-	-	-	+3000	-220	-	-	RNP APCH
TF	GT630	-	051° (056.0°)	4.0	-	-	-	-	-	RNP APCH

Path Desc	Waypoint Identifier	Fly-over	Course °M(°T)	Dist (NM)	Turn Dir	Altitude (ft)	Speed	VPA/RDH	Rec Navaid	Navigation Specification
TF	GT630	-	-	-	-	+2600	-200	-	-	RNP APCH
TF	GT633	-	321° (326.2°)	4.0	-	@2000	-	-	-	RNP APCH
TF	RW33	Y	321° (326.1°)	5.7	-	@175	-	-3.0/40	-	RNP APCH
TF	GT933	Y	321° (326.1°)	5.0	-	-	-	-	-	RNP APCH
DF	KONOX	Y	-	-	L	+2600	-200	-	-	RNP APCH

ESGT Holding KONOX

Path Desc	Waypoint Identifier	Fly-over	Course °M(°T)	Dist (NM)	Turn Dir	Altitude (ft)	Speed	VPA/RDH	Rec Navaid	Navigation Specification
HM	KONOX	Y	309° (313.6°)	-	L	+2600	-200	-	-	RNAV 1

FAS Data Block

Input data

Operation Type	0
SBAS Provider	1
Airport Identifier	ESGT
Runway	33
Runway Direction	0
Approach Performance Designator	0
Route Indicator	
Reference Path Data Selector	0
Reference Path Identifier	E33A
LTP/FTP Latitude	581847.0030N
LTP/FTP Longitude	0122103.2365E
LTP/FTP Ellipsoidal Height (metres)	75.6
FPAP Latitude	581927.2570N
Delta FPAP Latitude (seconds)	40.2540
FPAP Longitude	0122011.7795E
Delta FPAP Longitude (seconds)	-51.4570
Threshold Crossing Height	40.0
TCH Units Selector	0
Glidepath Angle (degrees)	3.00
Course Width (metres)	105.00
Length Offset (metres)	0
HAL (metres)	40.0
VAL (metres)	50.0

Output data

Data Block	10 14 07 13 05 21 00 00 01 33 33 05 B6 76 06 19 09 E9 4C 05 F4 16 7C 3A 01 FE 6D FE 90 01 2C 01 64 00 C8 FA 82 33 53 7A
Calculated CRC Value	8233537A

Required Additional Data

ICAO Code	ES
LTP/FTP Orthometric Height (metres)	41.1