

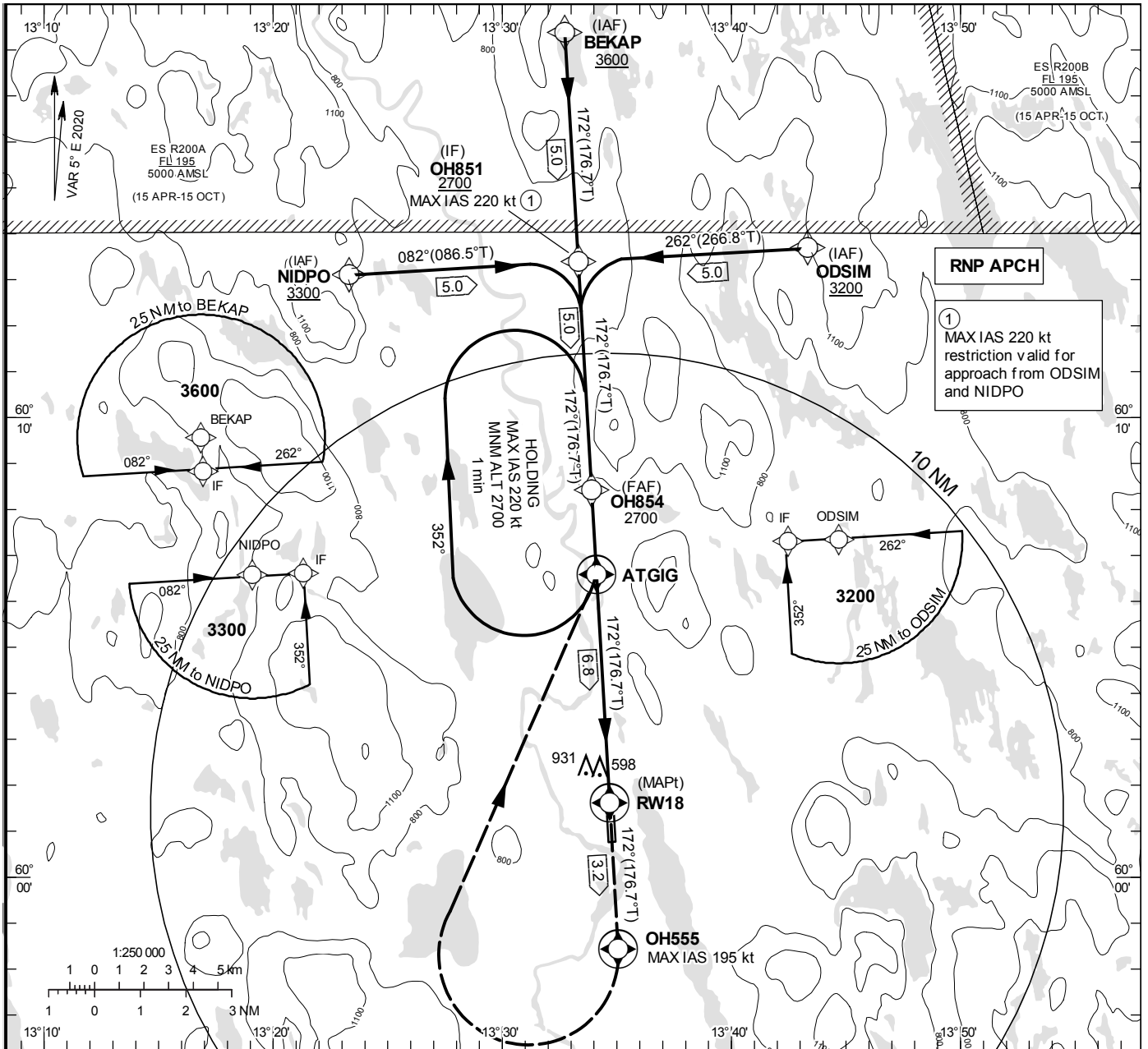
**INSTRUMENT
APPROACH
CHART – ICAO**

THR ELEV 474.3 ft, AD ELEV 474 ft
 OCH are related to THR.
 BRG are MAG (True).
 ALT, HGT and ELEV in ft.

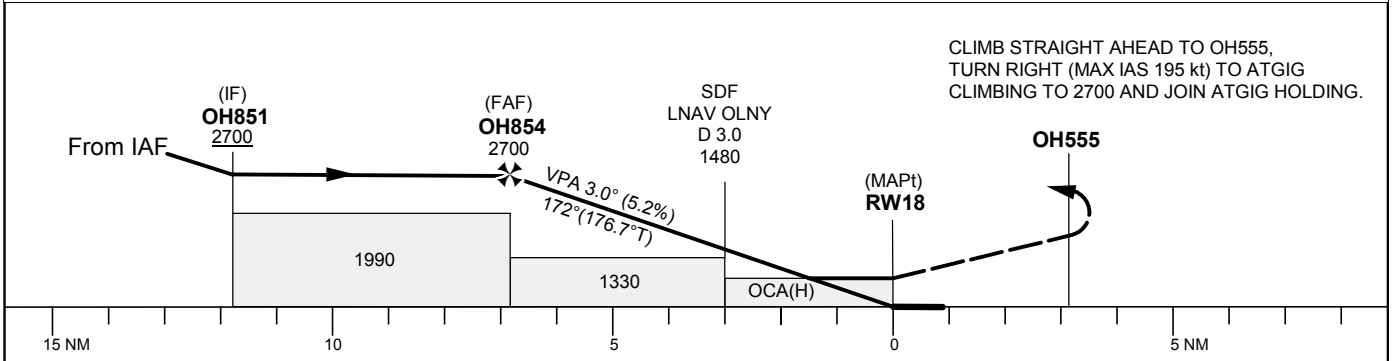
HAGFORS INFORMATION 122.230

RNP RWY 18
 (LPV, LNAV only)

EGNOS Ch 78869 E 18A



TA 5000 ft AMSL RDH 50 ft



OCA (H)				Final approach	Distance FAF-MAPt 6.8 NM					
Cat of ACFT	A	B	C	Dist to RW 18	6	5	4	3		
LPV	728(254)	740(266)	748(274)	ALT	2430	2120	1800	1480		
LNAV	1180(710)			GS	kt	80	100	120	140	160
				Rate of descent	ft/min	425	530	635	745	850

RNP RWY 18 via NIDPO

Path Desc	Waypoint Identifier	Fly-over	Course °M(°T)	Dist (NM)	Turn Dir	Altitude	Speed	VPA/RDH	Rec Navaid	Navigation Specification
IF	NIDPO	-	-	-	-	+3300	-	-	-	RNP APCH
TF	OH851	-	082°(086.5°)	5.0	-	+2700	-220	-	-	RNP APCH

RNP RWY 18 via BEKAP

Path Desc	Waypoint Identifier	Fly-over	Course °M(°T)	Dist (NM)	Turn Dir	Altitude	Speed	VPA/RDH	Rec Navaid	Navigation Specification
IF	BEKAP	-	-	-	-	+3600	-	-	-	RNP APCH
TF	OH851	-	172°(176.7°)	5.0	-	+2700	-	-	-	RNP APCH

RNP RWY 18 via ODSIM

Path Desc	Waypoint Identifier	Fly-over	Course °M(°T)	Dist (NM)	Turn Dir	Altitude	Speed	VPA/RDH	Rec Navaid	Navigation Specification
IF	ODSIM	-	-	-	-	+3200	-	-	-	RNP APCH
TF	OH851	-	262°(266.8°)	5.0	-	+2700	-220	-	-	RNP APCH

Path Desc	Waypoint Identifier	Fly-over	Course °M(°T)	Dist (NM)	Turn Dir	Altitude	Speed	VPA/RDH	Rec Navaid	Navigation Specification
IF	OH851	-	-	-	-	+2700	-	-	-	RNP APCH
TF	OH854	-	172°(176.7°)	5.0	-	@2700	-	-	-	RNP APCH
TF	RW18	Y	172°(176.7°)	6.8	-	@524	-	-3.0/50	-	RNP APCH
TF	OH555	Y	172°(176.7°)	3.2	-	-	-195	-	-	RNP APCH
DF	ATGIG	Y	-	-	R	+2700	-	-	-	RNP APCH
HM	ATGIG	Y	172°(176.7°)	-	R	+2700	-220	-	-	RNAV 1

FAS Data Block

RNP RWY 18

Input data

Operation Type	0
SBAS Provider	1 (EGNOS)
Airport Identifier	ESOH
Runway	18
Runway Letter	0 (None)
Approach Performance Designator	0
Route Indicator	
Reference Path Data Selector	0
Reference Path Identifier	E18A
LTP/FTP Latitude	600136.5700N
LTP/FTP Longitude	0133441.2400E
LTP/FTP Ellipsoidal Height (metres)	175.7
FPAP Latitude	600047.9100N
Delta FPAP Latitude (seconds)	-48.6600
FPAP Longitude	0133446.8700E
Delta FPAP Longitude (seconds)	5.6300
Threshold Crossing Height	50.0
TCH Units Selector	0 (feet)
Glidepath Angle (degrees)	3.00
Course Width (metres)	105.00
Length Offset (metres)	0
HAL (metres)	40.0
VAL (metres)	50.0

Output data

Data Block	10 08 0F 13 05 12 00 00 01 38 31 05 74 BE C2 19 B0 BC D3 05 DD 1A D8 83 FE FC 2B 00 F4 01 2C 01 64 00 C8 FA B7 0A 3B 79
Calculated CRC Value	B70A3B79

Required Additional Data

ICAO Code	ES
LTP/FTP Orthometric Height (metres)	144.6