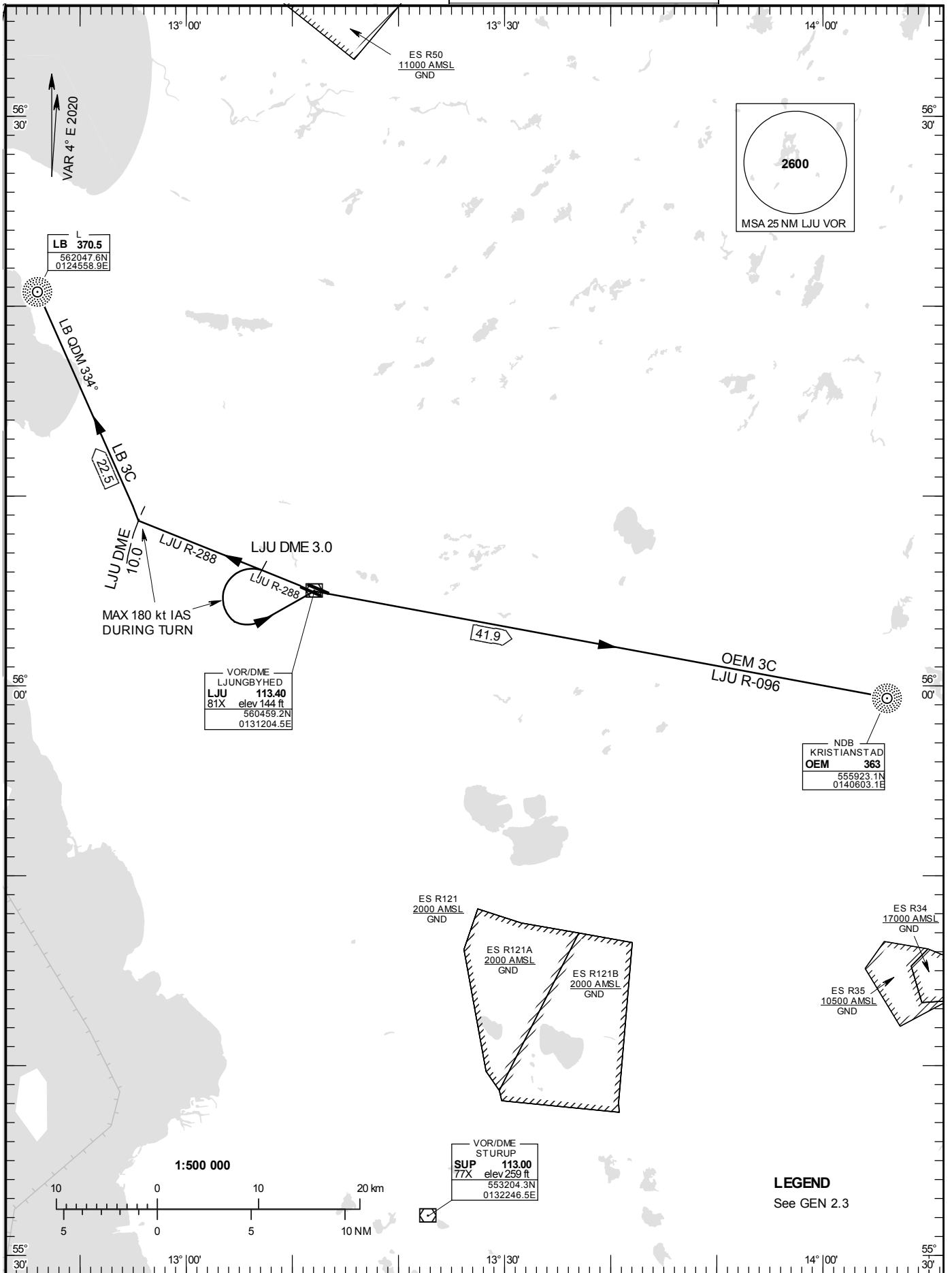


STANDARD INSTRUMENT
DEPARTURE AND ARRIVAL
CHART (SID/STAR) - ICAO

HGT and ALT in ft
BRG are MAG
TA 5000 ft AMSL

LJUNGBYHED TOWER	130.705
LJUNGBYHED GROUND	121.655
LJUNGBYHED APPROACH	129.555

SID RWY 29L



DEPARTURE (SID) RWY 29L

INITIAL CLIMB CLEARANCE

Common to all SIDs published on charts:
Unless otherwise specified, climb to 4000 ft.

REMARK

MNM climb gradient due to terrain/obstacles in individual departures below. Where no climb gradient is specified, 3.3% (200 ft/NM) is assumed.

MNM climb gradient required by ATC: Aircraft proceeding on SID shall use 6.6% (400 ft/NM) as a minimum gradient of climb up to 4000 ft AMSL. Aircraft unable to conform with this procedure shall inform ATC accordingly.

LIMA BRAVO THREE CHARLIE DEPARTURE (LB 3C)

Intercept LJU R-288. At LJU DME 10.0 turn right and intercept LB QDM 334° Proceed to LB.

OSCAR ECHO MIKE THREE CHARLIE DEPARTURE (OEM 3C)

Intercept LJU R-288. At LJU DME 3.0 turn left (max speed 180 kt IAS during turn) and proceed to LJU. At LJU intercept and proceed on LJU R-096. Proceed to OEM.