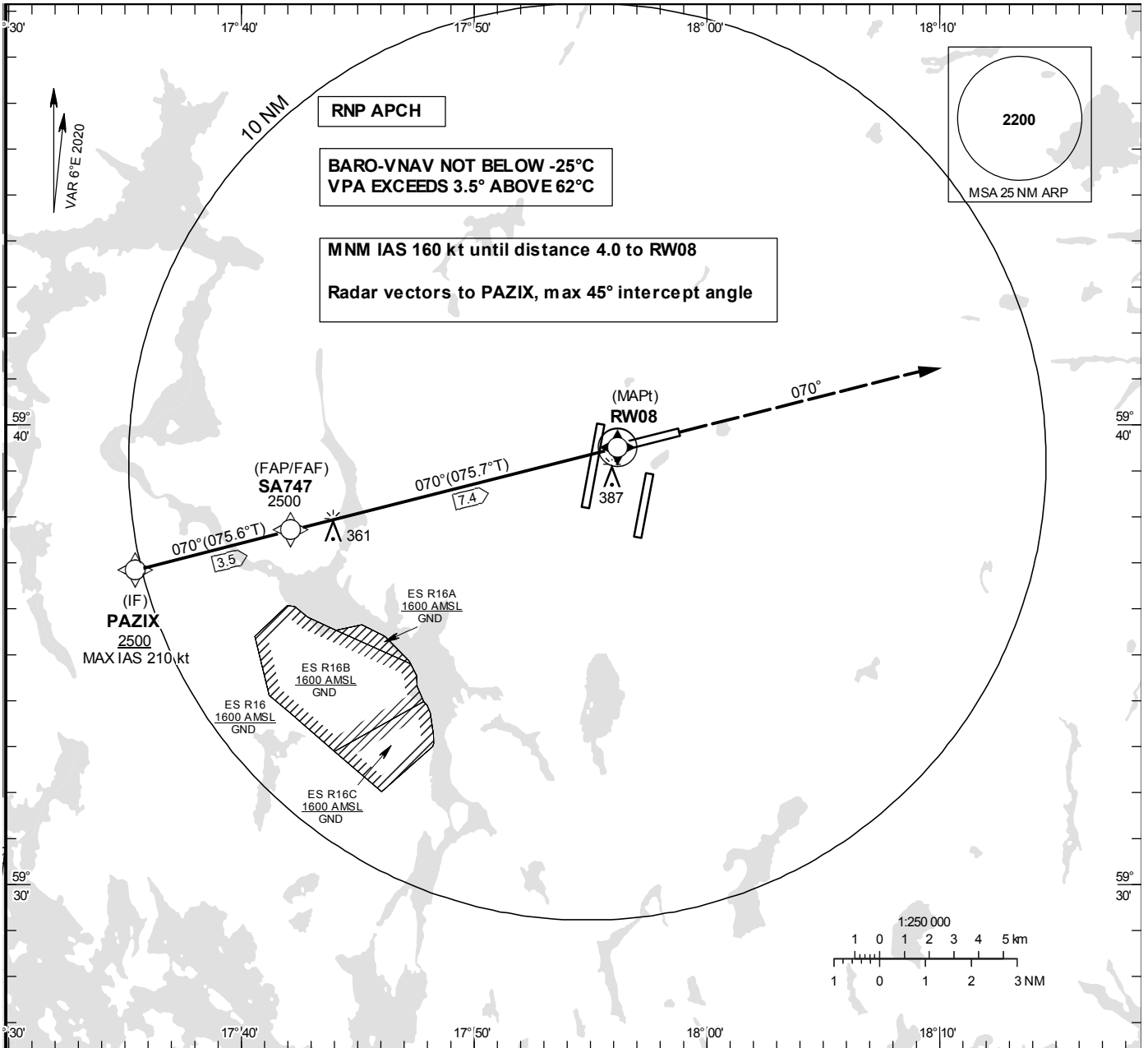


INSTRUMENT APPROACH CHART – ICAO

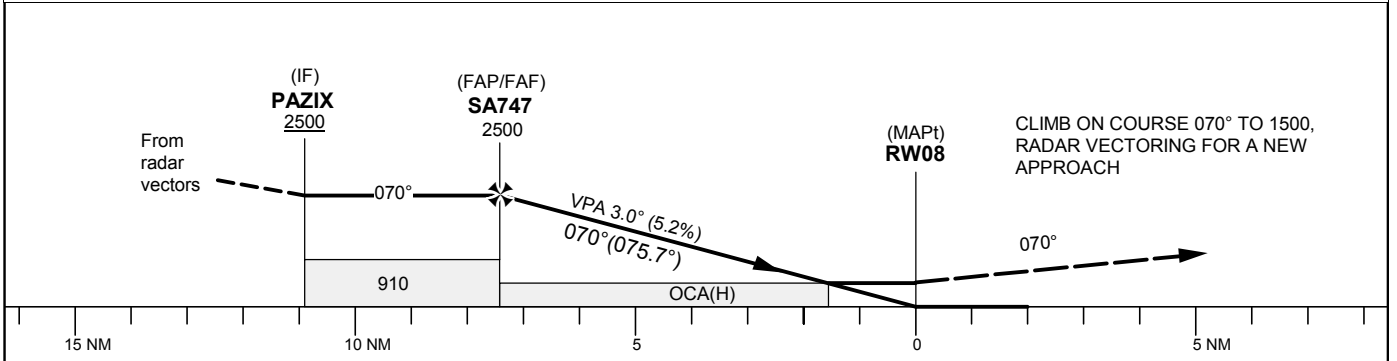
THR ELEV 108 ft, AD ELEV 138 ft
 OCH are related to THR.
 BRG are MAG (True).
 ALT, HGT and ELEV in ft.

ARLANDA TOWER 128.730/
118.505/125.130
ARLANDA ATIS ARR 119.005
STOCKHOLM APPROACH 123.755

RNP RWY 08
EGNOS Ch 85945 E 08A



TA 5000 ft AMSL RDH 50.0 ft Special COM Failure Procedures see ESSA AD 2.22



Cat of ACFT	OCA (H)				Final approach Dist to RW08	Distance FAF-MAPt 7.4 NM						
	A	B	C	D		7	6	5	4	3	2	
LPV	397 (289)	407 (299)	417 (309)	427 (319)	ALT	2387	2069	1750	1432	1113	795	
LNAV/VNAV	499 (391)	509(401)	530 (422)	542 (434)	GS	kt	80	100	120	140	160	180
LNAV	630(530)				Rate of descent	ft/min	425	530	635	745	850	955

RNP RWY 08 via PAZIX

Path Desc	Waypoint Identifier	Fly-over	Course °M(°T)	Dist (NM)	Turn Dir	Altitude	Speed	VPA/RDH	Rec Navaid	Navigation Specification
IF	PAZIX	-	-	-	-	+2500	-210	-	-	RNP APCH
TF	SA747	-	070°(075.6°)	3.5	-	@2500	-	-	-	RNP APCH
TF	RW08	Y	070°(075.7°)	7.4	-	@158	-	-3.00/50	-	RNP APCH
CA	-	-	070°(075.7°)	-	-	+1500	-	-	-	RNP APCH
VM	-	-	070°	-	-	@1500	-	-	-	RNP APCH

FAS Data Block

RNP RWY 08

Input data

Operation Type	0
SBAS Provider	1 (EGNOS)
Airport Identifier	ESSA
Runway	08
Runway Letter	0 (None)
Approach Performance Designator	0
Route Indicator	
Reference Path Data Selector	0
Reference Path Identifier	E08A
LTP/FTP Latitude	593930.3100N
LTP/FTP Longitude	0175610.0800E
LTP/FTP Ellipsoidal Height (metres)	56.1
FPAP Latitude	593950.0300N
Delta FPAP Latitude (seconds)	19.7200
FPAP Longitude	0175844.9500E
Delta FPAP Longitude (seconds)	154.8700
Threshold Crossing Height	50.0
TCH Units Selector	0 (feet)
Glidepath Angle (degrees)	3.00
Course Width (metres)	105.00
Length Offset (metres)	0
HAL (metres)	40.0
VAL (metres)	50.0

Output data

Data Block	10 01 13 13 05 08 00 00 01 38 30 05 0C 45 9A 19 C0 85 B2 07 31 16 10 9A 00 EC B9 04 F4 01 2C 01 64 00 C8 FA 2D C9 14 62
Calculated CRC Value	2DC91462
Supplied CRC Value	2DC91462
Comparison Result	OK