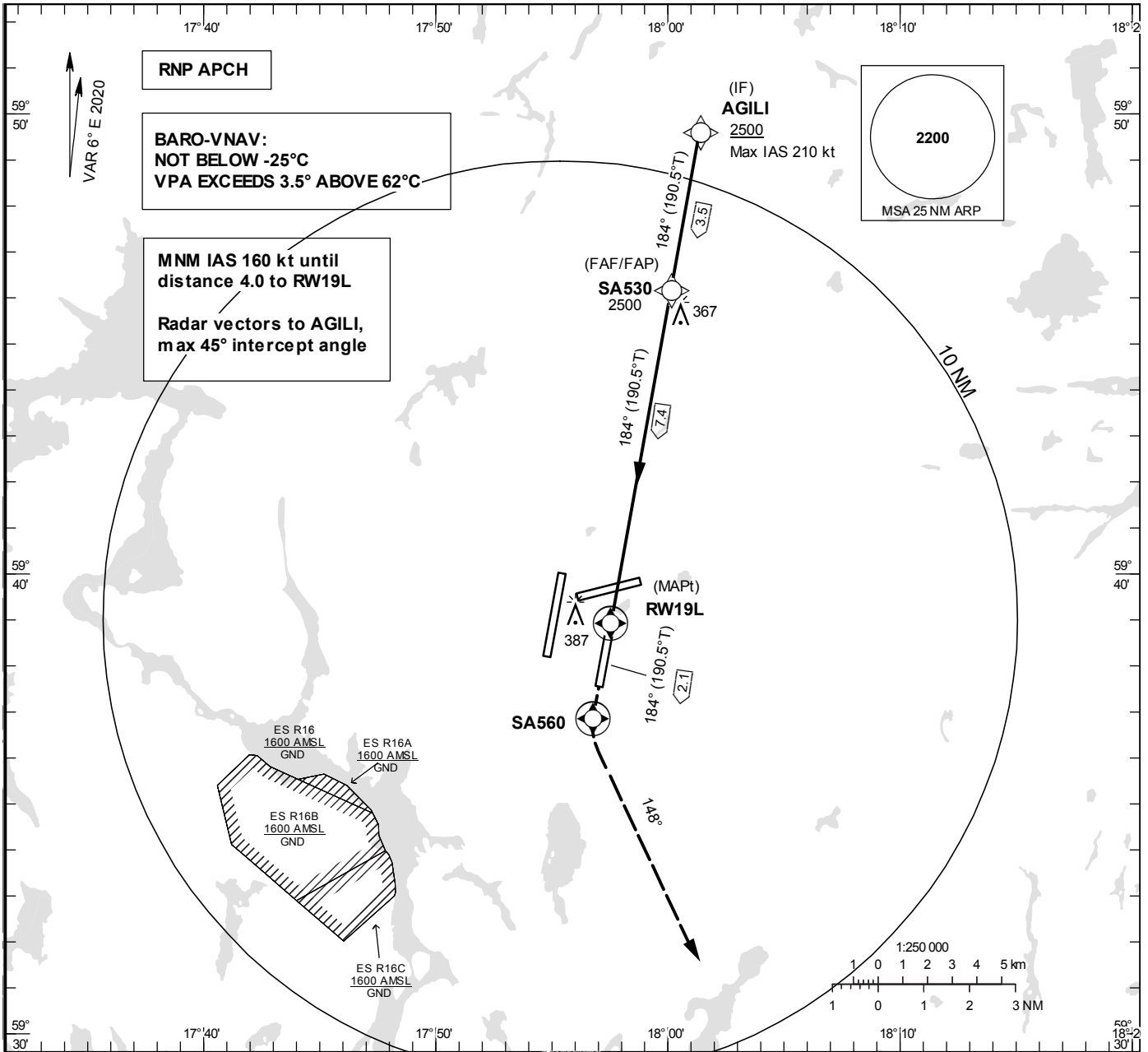


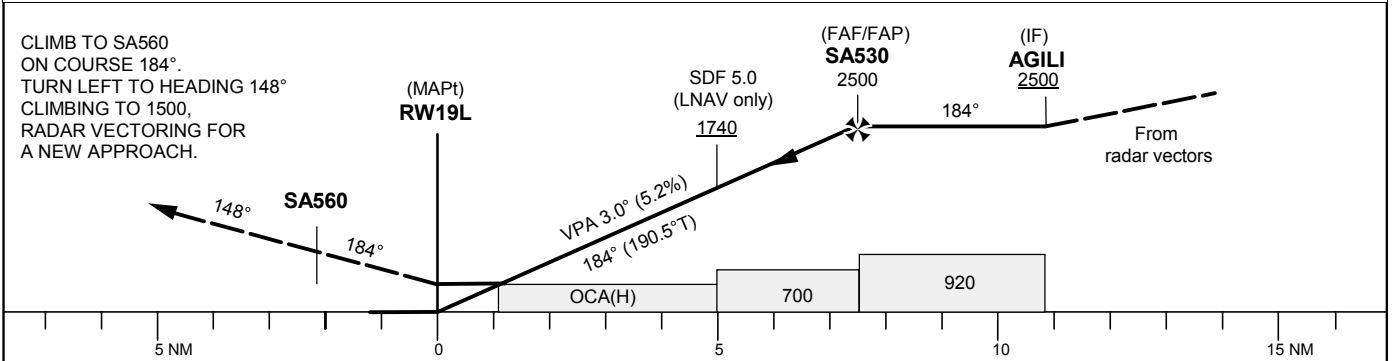
**INSTRUMENT APPROACH CHART – ICAO**  
**THR ELEV 98.9 ft, AD ELEV 138 ft**  
 OCH are related to THR.  
 BRG are MAG (True).  
 ALT, HGT and ELEV in ft.

**ARLANDA TOWER** 128.730/  
118.505/125.130  
**ARLANDA ATIS ARR** 119.005  
**STOCKHOLM APPROACH** 123.755

**RNP RWY 19L**  
 (LNAV/VNAV, LNAV only)



TA 5000 ft AMSL RDH 50.0 ft Special Com Failure Procedures see ESSA AD 2.22



OCA (H)				Final approach	Distance FAF-MAPt 7.4 NM							
Cat of ACFT	A	B	C	D	Dist to RW19L	2	3	4	5	6	7	
LNAV/VNAV	463 (365)	468 (370)	473 (375)	479 (381)	ALT	786	1104	1423	1741	2060	2378	
LNAV	530 (440)				GS	kt	80	100	120	140	160	180
					Rate of descent	ft/min	425	530	635	745	850	955

**RNP RWY 19L via AGILI**

Path Term	Waypoint Identifier	Fly-over	Course °M(°T)	Dist (NM)	Turn Dir	Rest Alts (ft AMSL)	Speed Limits (kt)	VPA/ RDH (°/ft)	Rec Navaid	Navigation Specification
IF	AGILI	-	-	-	-	+2500	-210	-	-	RNP APCH
TF	SA530	-	184° (190.5°)	3.5	-	@2500	-	-	-	RNP APCH
TF	RW19L	Y	184° (190.5°)	7.4	-	@149	-	-3.00/50	-	RNP APCH
CF	SA560	Y	184° (190.5°)	2.1	-	-	-	-	ARL	RNP APCH
VM	-	-	148°	-	L	@1500	-	-	-	RNP APCH