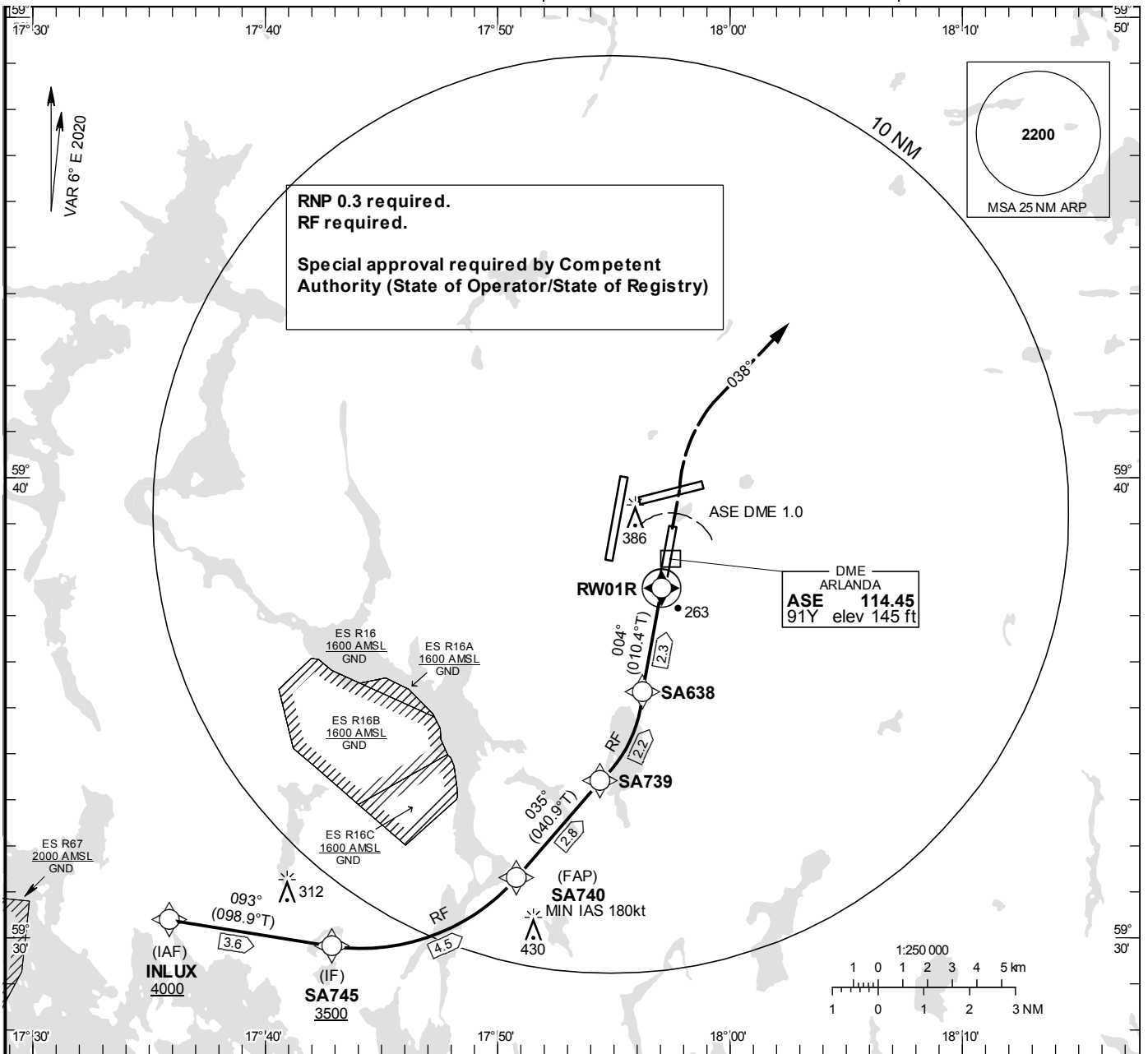


INSTRUMENT APPROACH CHART – ICAO

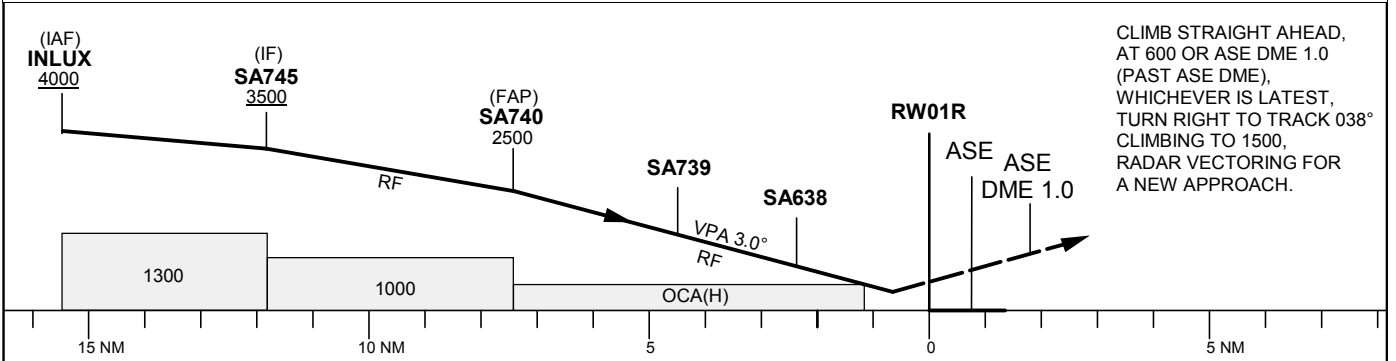
THR ELEV 138.0 ft, AD ELEV 138 ft
 OCH are related to THR.
 BRG are MAG (True).
 ALT, HGT and ELEV in ft.
NA BELOW -30° C

ARLANDA TOWER 128.730/
118.505/125.130
ARLANDA ATIS ARR 119.005
STOCKHOLM APPROACH 123.755

RNP x RWY 01R (AR)



TA 5000 ft AMSL RDH 50.9 ft Special COM Failure Procedures see ESSA AD 2.22



CLIMB STRAIGHT AHEAD, AT 600 OR ASE DME 1.0 (PAST ASE DME), WHICHEVER IS LATEST, TURN RIGHT TO TRACK 038° CLIMBING TO 1500, RADAR VECTORING FOR A NEW APPROACH.

OCA (H)				
Cat of ACFT	A	B	C	D
RNP (0.3)	489 (351)	497 (359)	509 (371)	520 (382)

Prescribed Coding/Description RNP x RWY 01R (AR)

Path Desc	Waypoint Identifier	Fly-over	Course °M(°T)	Dist (NM)	Turn Dir	Altitude	Speed	VPA/RDH	ARC Radius (NM)	ARC Center	Nav Spec
IF	INLUX	-	-	-	-	+4000	-	-	-	-	RNP 1.0
TF	SA745	-	093°(098.9°)	3.6	-	+3500	-	-	-	-	RNP 1.0
RF	SA740	-	-	4.5	L	2500	+180	-	4.4277	SA744	RNP 1.0
TF	SA739	-	035° (040.9°)	2.8	-	-	-	-3.0	-	-	RNP 0.3
RF	SA638	-	-	2.2	L	-	-	-3.0	4.0767	SA737	RNP 0.3
TF	RW01R	Y	004° (010.4°)	2.3	-	188	-	-3.0	-	-	RNP 0.3