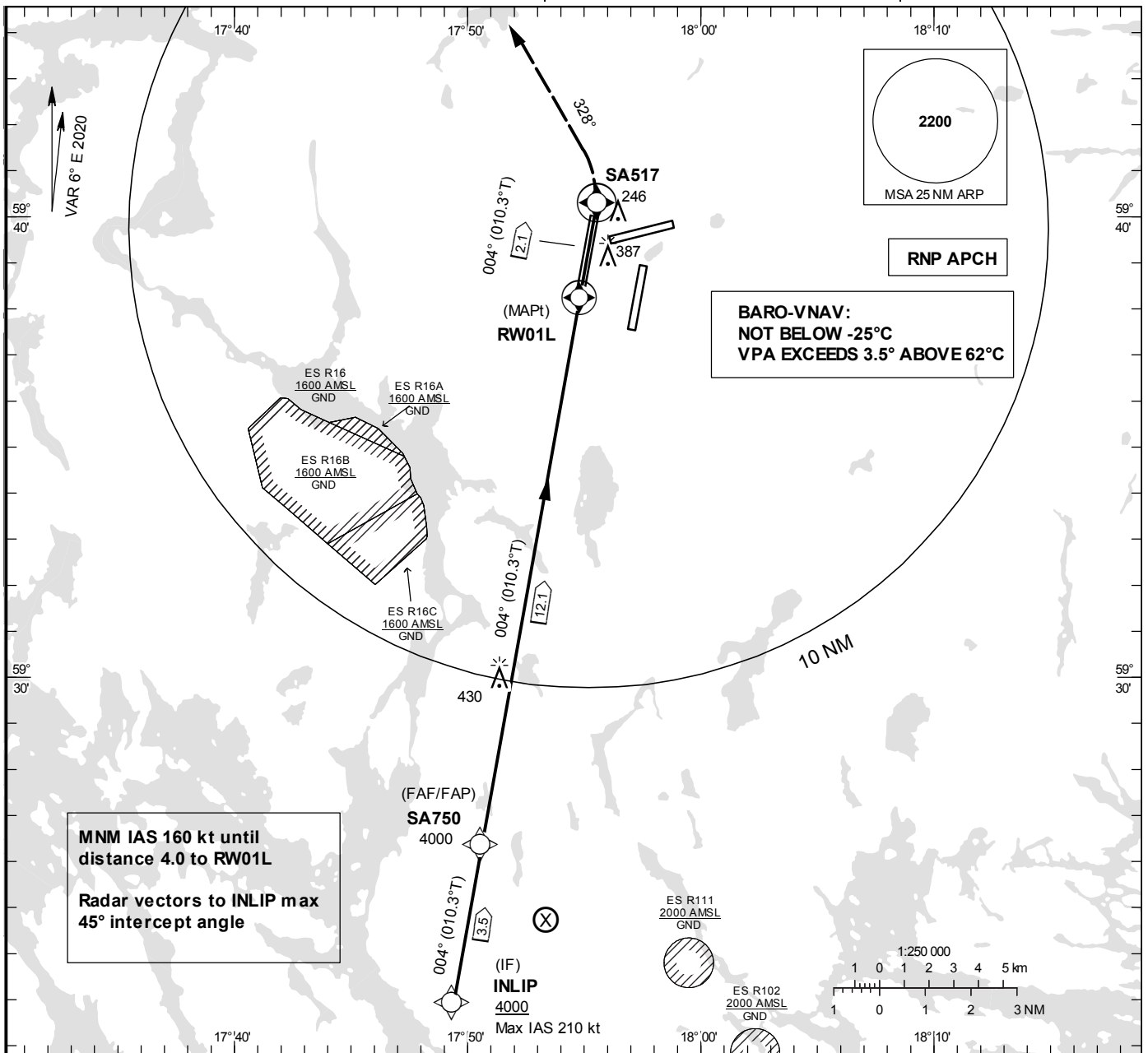


INSTRUMENT APPROACH CHART – ICAO

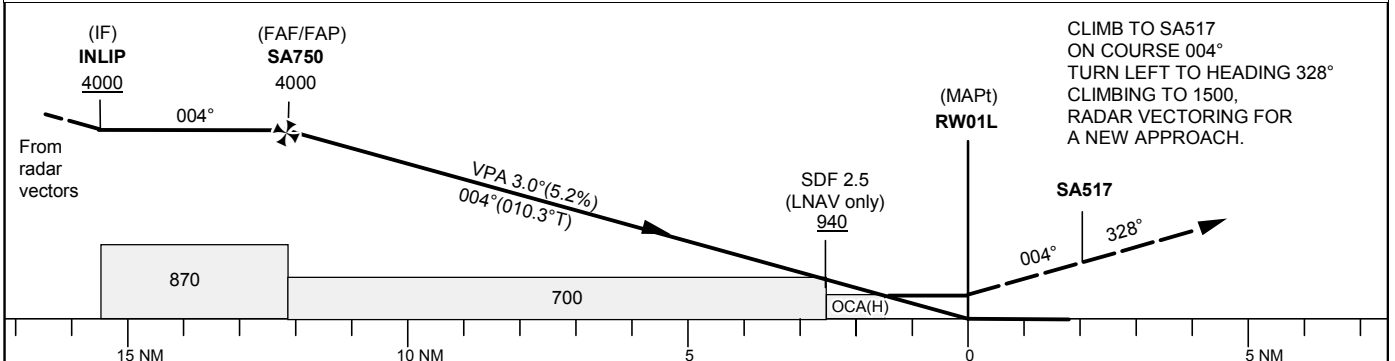
THR ELEV 98.6 ft, AD ELEV 138 ft
OCH are related to THR.
BRG are MAG (True).
ALT, HGT and ELEV in ft.

ARLANDA TOWER 128.730/
118.505/125.130
ARLANDA ATIS ARR 119.005
STOCKHOLM APPROACH 123.755

RNP z RWY 01L
EGNOS Ch 47360 E 01A



TA 5000 ft AMSL RDH 50.0 ft Special Com Failure Procedures see ESSA AD 2.22



Cat of ACFT	OCA (H)				Final approach Dist to RW01L	Distance FAF-MAPt 12.1 NM											
	A	B	C	D		12	11	10	9	8	7	6	5	4	3	2	
LPV	302 (204)	312 (214)	322 (224)	332 (234)	ALT	3970	3651	3333	3014	2696	2378	2059	1741	1422	1104	785	
LNAV/VNAV	394 (296)	404 (306)	425 (327)	451 (353)	GS			80	100	120	140	160	180				
LNAV		560 (470)			Rate of descent			ft/min	425	530	635	745	850	955			

RNP z RWY 01L via INLIP

Path Term	Waypoint Identifier	Fly-over	Course°M(°T)	Dist (NM)	Turn Dir	Rest Alts (ft AMSL)	Speed Limits (kt)	VPA/RDH (°/ft)	Rec Navaid	Navigation Specification
IF	INLIP	-	-	-	-	+4000	-210	-	-	RNP APCH
TF	SA750	-	004° (010.3°)	3.5	-	@4000	-	-	-	RNP APCH
TF	RW01L	Y	004° (010.3°)	12.1	-	@149	-	-3.00/50	-	RNP APCH
CF	SA517	Y	004° (010.3°)	2.1	-	-	-	-	ARL	RNP APCH
VM	-	-	328°	-	L	@1500	-	-	-	RNP APCH

FAS Data Block

RNP z RWY 01L

Input data

Operation Type	0
SBAS Provider	1 (EGNOS)
Airport Identifier	ESSA
Runway	01
Runway Letter	3 (Left)
Approach Performance Designator	0
Route Indicator	Z
Reference Path Data Selector	0
Reference Path Identifier	E01A
LTP/FTP Latitude	593814.1100N
LTP/FTP Longitude	0175447.6000E
LTP/FTP Ellipsoidal Height (metres)	53.2
FPAP Latitude	593959.0400N
Delta FPAP Latitude (seconds)	104.9300
FPAP Longitude	0175525.5600E
Delta FPAP Longitude (seconds)	37.9600
Threshold Crossing Height	50.0
TCH Units Selector	0 (feet)
Glidepath Angle (degrees)	3.00
Course Width (metres)	105.00
Length Offset (metres)	0
HAL (metres)	40.0
VAL (metres)	35.0

Output data

Data Block	10 01 13 13 05 C1 D0 00 01 31 30 05 BC F1 97 19 60 01 B0 07 14 16 C4 33 03 90 28 01 F4 01 2C 01 64 00 C8 AF 03 BE 7A 7F
Calculated CRC Value	03BE7A7F
Supplied CRC Value	03BE7A7F
Comparison Result	OK