

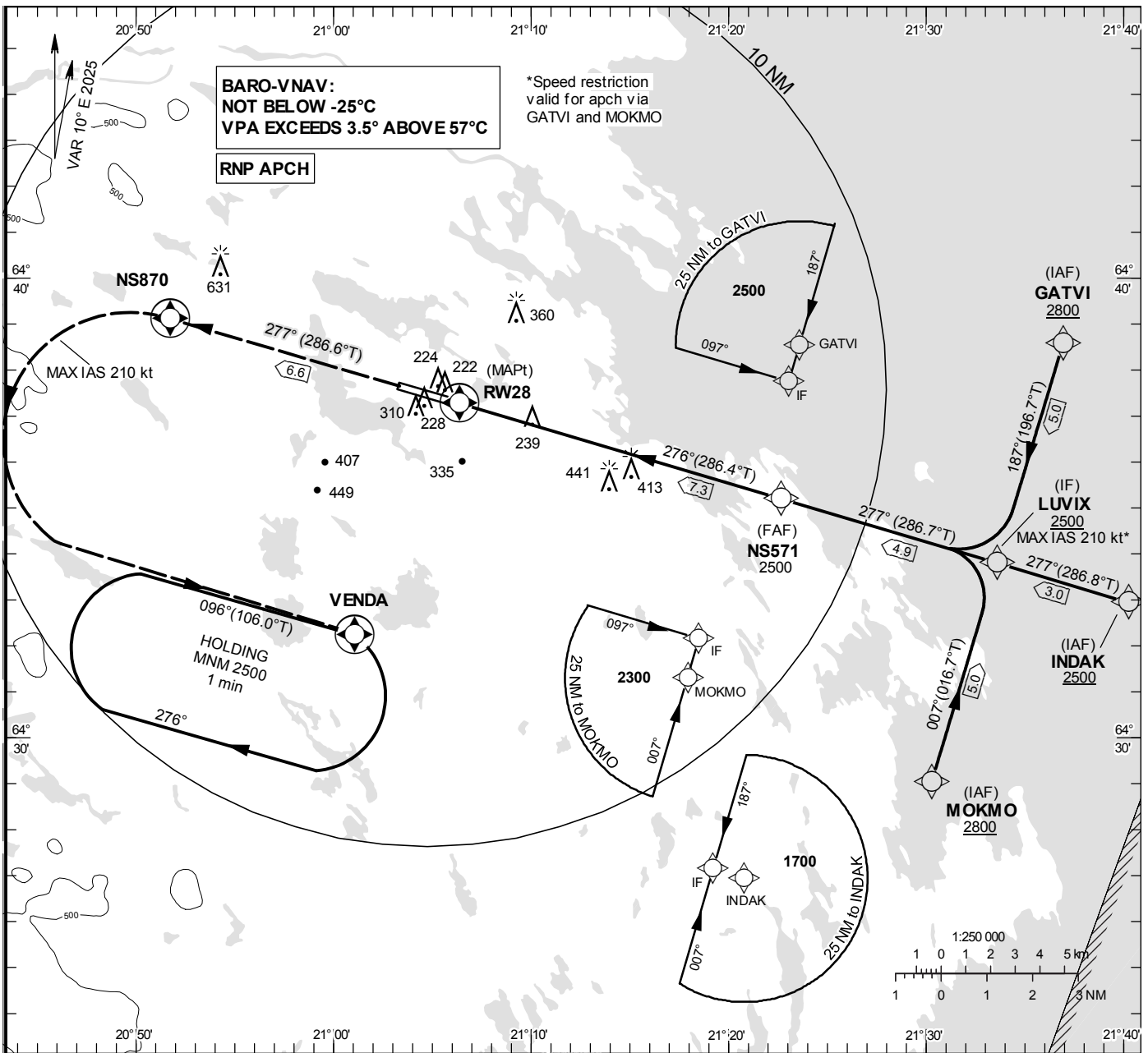
**INSTRUMENT
APPROACH
CHART – ICAO**

THR ELEV 122.3 ft, AD ELEV 158 ft
 OCH are related to THR.
 BRG are MAG (True).
 ALT, HGT and ELEV in ft.

SKELLEFTEÅ TOWER 122.055

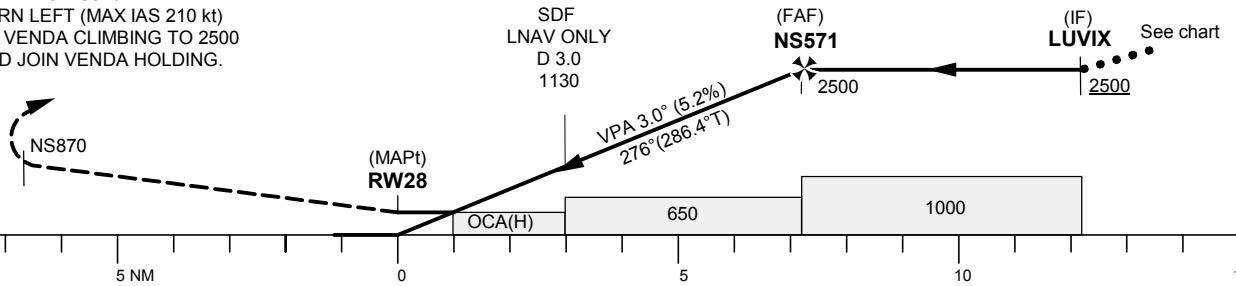
RNP RWY 28

EGNOS CH 97976 E28A



TA 5000 ft AMSL RDH 50 ft

CLIMB TO NS870.
 TURN LEFT (MAX IAS 210 kt)
 TO VENDA CLIMBING TO 2500
 AND JOIN VENDA HOLDING.



Cat of ACFT	OCA (H)				Final approach Dist to RW28	Distance FAF-MAPt 7.3 NM						
	A	B	C	D		1	2	3	4	5	6	7
LPV	358 (236)	371 (249)	379 (257)	389 (267)	ALT	490	810	1130	1450	1760	2080	2400
LNAV/VNAV	352 (230)	365 (243)	375 (253)	401 (279)	GS	kt	80	100	120	140	160	180
LNAV	490 (370)				Rate of descent	ft/min	425	530	635	745	850	955
Circling	630 (480)	710 (560)	850 (700)	1030 (880)								

RNP RWY 28 via GATVI

Path Desc	Waypoint Identifier	Fly-over	Course °M(°T)	Dist (NM)	Turn Dir	Altitude	Speed	VPA/RDH	Rec Navaid	Navigation Specification
IF	GATVI	-	-	-	-	+2800	-	-	-	RNP APCH
TF	LUVIX	-	187°(196.7°)	5.0	-	+2500	-210	-	-	RNP APCH

RNP RWY 28 via INDAK

Path Desc	Waypoint Identifier	Fly-over	Course °M(°T)	Dist (NM)	Turn Dir	Altitude	Speed	VPA/RDH	Rec Navaid	Navigation Specification
IF	INDAK	-	-	-	-	+2500	-	-	-	RNP APCH
TF	LUVIX	-	277°(286.8°)	3.0	-	+2500	-	-	-	RNP APCH

RNP RWY 28 via MOKMO

Path Desc	Waypoint Identifier	Fly-over	Course °M(°T)	Dist (NM)	Turn Dir	Altitude	Speed	VPA/RDH	Rec Navaid	Navigation Specification
IF	MOKMO	-	-	-	-	+2800	-	-	-	RNP APCH
TF	LUVIX	-	007°(016.7°)	5.0	-	+2500	-210	-	-	RNP APCH

Path Desc	Waypoint Identifier	Fly-over	Course °M(°T)	Dist (NM)	Turn Dir	Altitude	Speed	VPA/RDH	Rec Navaid	Navigation Specification
IF	LUVIX	-	-	-	-	+2500	-	-	-	RNP APCH
TF	NS571	-	277°(286.7°)	4.9	-	@2500	-	-	-	RNP APCH
TF	RW28	Y	276°(286.4°)	7.3	-	@173	-	-3.0/50	-	RNP APCH
TF	NS870	Y	277°(286.6°)	6.6	-	-	-	-	-	RNP APCH
DF	VENDA	Y	-	-	L	+2500	-210	-	-	RNP APCH

ESNS Holding VENDA

Path Desc	Waypoint Identifier	Fly-over	Course °M(°T)	Dist (NM)	Turn Dir	Altitude	Speed	VPA/RDH	Rec Navaid	Navigation Specification
HM	VENDA	Y	096°(106.0°)	-	R	+2500	-	-	-	RNAV 1

FAS Data Block

RNP RWY 28

Input data

Operation Type	0
SBAS Provider	1 (EGNOS)
Airport Identifier	ESNS
Runway	28
Runway Letter	0 (None)
Approach Performance Designator	0
Route Indicator	
Reference Path Data Selector	0
Reference Path Identifier	E28A
LTP/FTP Latitude	643715.8895N
LTP/FTP Longitude	0210622.8880E
LTP/FTP Ellipsoidal Height (metres)	58.9
FPAP Latitude	643738.6750N
Delta FPAP Latitude (seconds)	22.7855
FPAP Longitude	0210320.8335E
Delta FPAP Longitude (seconds)	-182.0545
Threshold Crossing Height	50.0
TCH Units Selector	0 (feet)
Glidepath Angle (degrees)	3.00
Course Width (metres)	105.00
Length Offset (metres)	0
HAL (metres)	40.0
VAL (metres)	50.0

Output data

Data Block	10 13 0E 13 05 1C 00 00 01 38 32 05 E3 7B BB 1B 50 D0 0E 09 4D 16 03 B2 00 B3 71 FA F4 01 2C 01 64 00 C8 FA CB C6 24 3C
Calculated CRC Value	CBC6243C

Required Additional Data

ICAO Code	ES
LTP/FTP Orthometric Height (metres)	37.3