

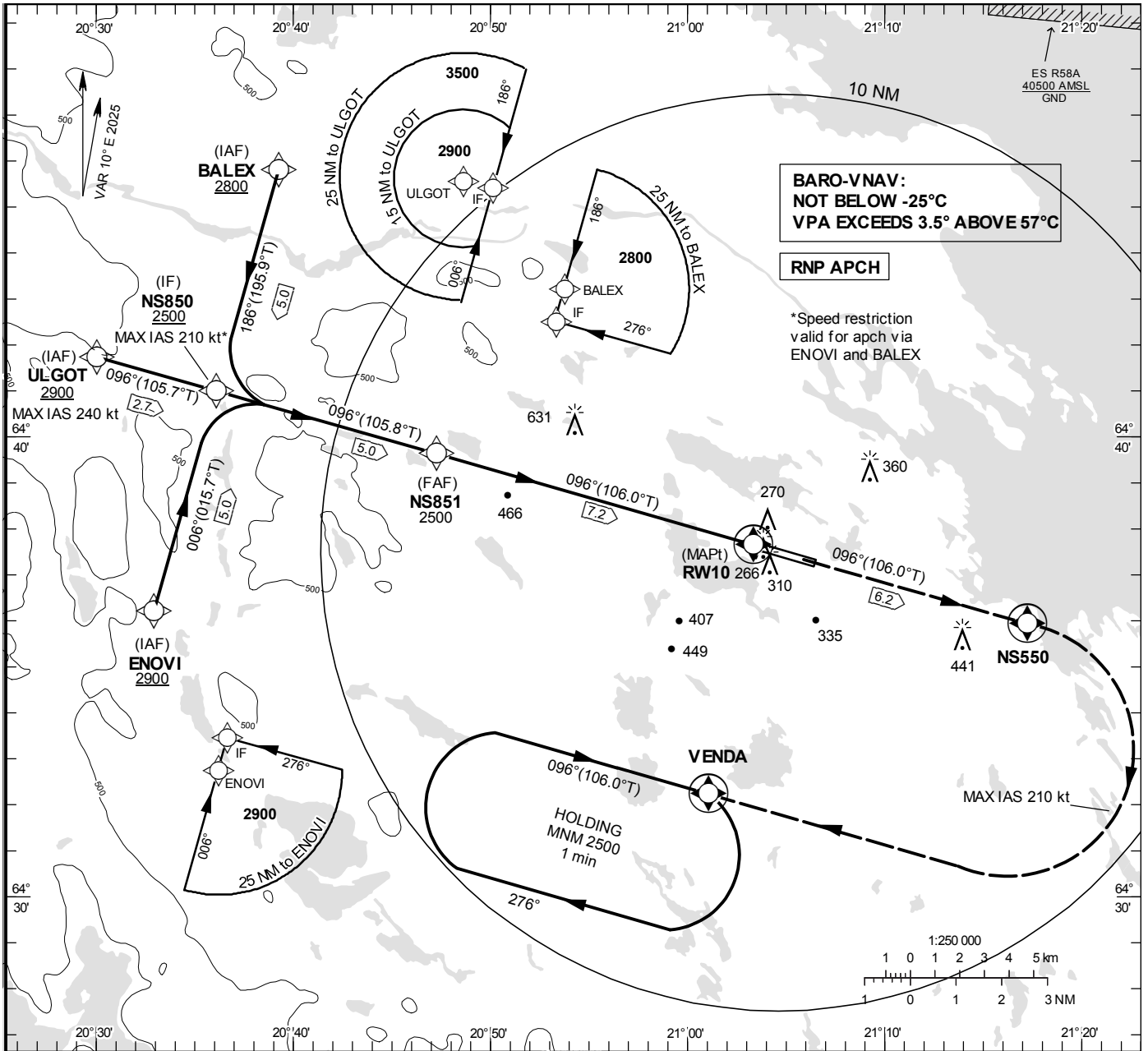
INSTRUMENT APPROACH CHART – ICAO

THR ELEV 158 ft, AD ELEV 158 ft
 OCH are related to THR.
 BRG are MAG (True).
 ALT, HGT and ELEV in ft.

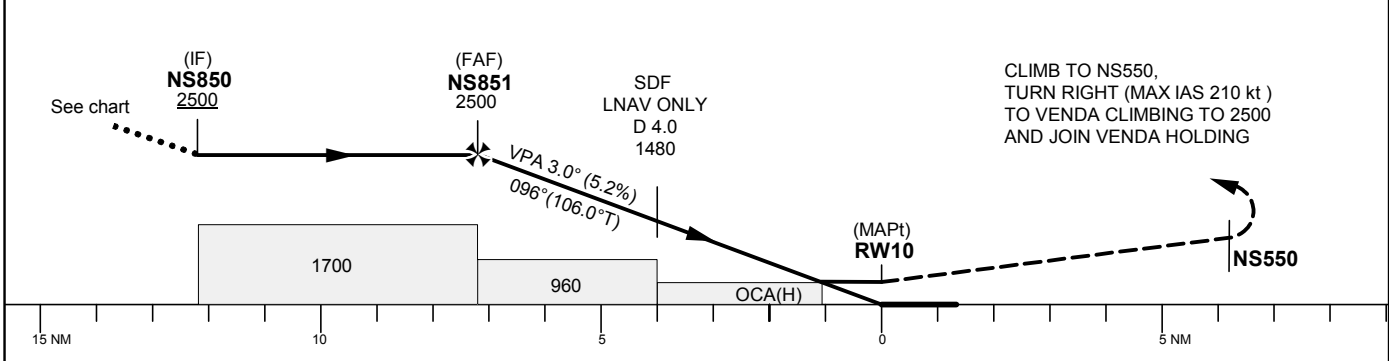
SKELLEFTEÅ TOWER 122.055

RNP RWY 10

EGNOS CH 72334 E10A



TA 5000 ft AMSL RDH 50 ft



Cat of ACFT	OCA (H)				Final approach Dist to RWY10	Distance FAF-MAPt 7.2 NM						
	A	B	C	D		7	6	5	4	3	2	1
LPV	396 (238)	408 (250)	417 (259)	427 (269)	ALT	2440	2120	1800	1480	1160	840	530
LNAV/VNAV	401 (243)	413 (255)	461 (303)	471 (313)	GS	kt	80	100	120	140	160	180
LNAV	540 (390)				Rate of descent	ft/min	425	530	635	745	850	955
Circling	630 (480)	710 (560)	850 (700)	1030 (880)								

RNP RWY 10 via BALEX

Path Desc	Waypoint Identifier	Fly-over	Course °M(°T)	Dist (NM)	Turn Dir	Altitude	Speed	VPA/RDH	Rec Navaid	Navigation Specification
IF	BALEX	-	-	-	-	+2800	-	-	-	RNP APCH
TF	NS850	-	186°(195.9°)	5.0	-	+2500	-210	-	-	RNP APCH

RNP RWY 10 via ENOVI

Path Desc	Waypoint Identifier	Fly-over	Course °M(°T)	Dist (NM)	Turn Dir	Altitude	Speed	VPA/RDH	Rec Navaid	Navigation Specification
IF	ENOVI	-	-	-	-	+2900	-	-	-	RNP APCH
TF	NS850	-	006(015.7°)	5.0	-	+2500	-210	-	-	RNP APCH

RNP RWY 10 via ULGOT

Path Desc	Waypoint Identifier	Fly-over	Course °M(°T)	Dist (NM)	Turn Dir	Altitude	Speed	VPA/RDH	Rec Navaid	Navigation Specification
IF	ULGOT	-	-	-	-	+2900	-240	-	-	RNP APCH
TF	NS850	-	096°(105.7°)	2.7	-	+2500	-	-	-	RNP APCH

Path Desc	Waypoint Identifier	Fly-over	Course °M(°T)	Dist (NM)	Turn Dir	Altitude	Speed	VPA/RDH	Rec Navaid	Navigation Specification
IF	NS850	-	-	-	-	+2500	-	-	-	RNP APCH
TF	NS851	-	096°(105.8°)	5.0	-	@2500	-	-	-	RNP APCH
TF	RW10	Y	096°(106.0°)	7.2	-	@208	-	-3.0/50	-	RNP APCH
TF	NS550	Y	096°(106.0°)	6.2	-	-	-	-	-	RNP APCH
DF	VENDA	Y	-	-	R	+2500	-210	-	-	RNP APCH

ESNS Holding VENDA

Path Desc	Waypoint Identifier	Fly-over	Course °M(°T)	Dist (NM)	Turn Dir	Altitude	Speed	VPA/RDH	Rec Navaid	Navigation Specification
HM	VENDA	Y	096°(106.0°)	-	R	+2500	-	-	-	RNAV 1

FAS Data Block

RNP RWY 10

Input data

Operation Type	0
SBAS Provider	1 (EGNOS)
Airport Identifier	ESNS
Runway	10
Runway Letter	0 (None)
Approach Performance Designator	0
Route Indicator	
Reference Path Data Selector	0
Reference Path Identifier	E10A
LTP/FTP Latitude	643738.6750N
LTP/FTP Longitude	0210320.8335E
LTP/FTP Ellipsoidal Height (metres)	69.8
FPAP Latitude	643715.8895N
Delta FPAP Latitude (seconds)	-22.7855
FPAP Longitude	0210622.8880E
Delta FPAP Longitude (seconds)	182.0545
Threshold Crossing Height	50.0
TCH Units Selector	0 (feet)
Glidepath Angle (degrees)	3.00
Course Width (metres)	105.00
Length Offset (metres)	0
HAL (metres)	40.0
VAL (metres)	50.0

Output data

Data Block	10 13 0E 13 05 0A 00 00 01 30 31 05 E6 2D BC 1B 03 42 09 09 BA 16 FD 4D FF 4D 8E 05 F4 01 2C 01 64 00 C8 FA 9B EE 8C FB
Calculated CRC Value	9BEE8CFB

Required Additional Data

ICAO Code	ES
LTP/FTP Orthometric Height (metres)	48.0