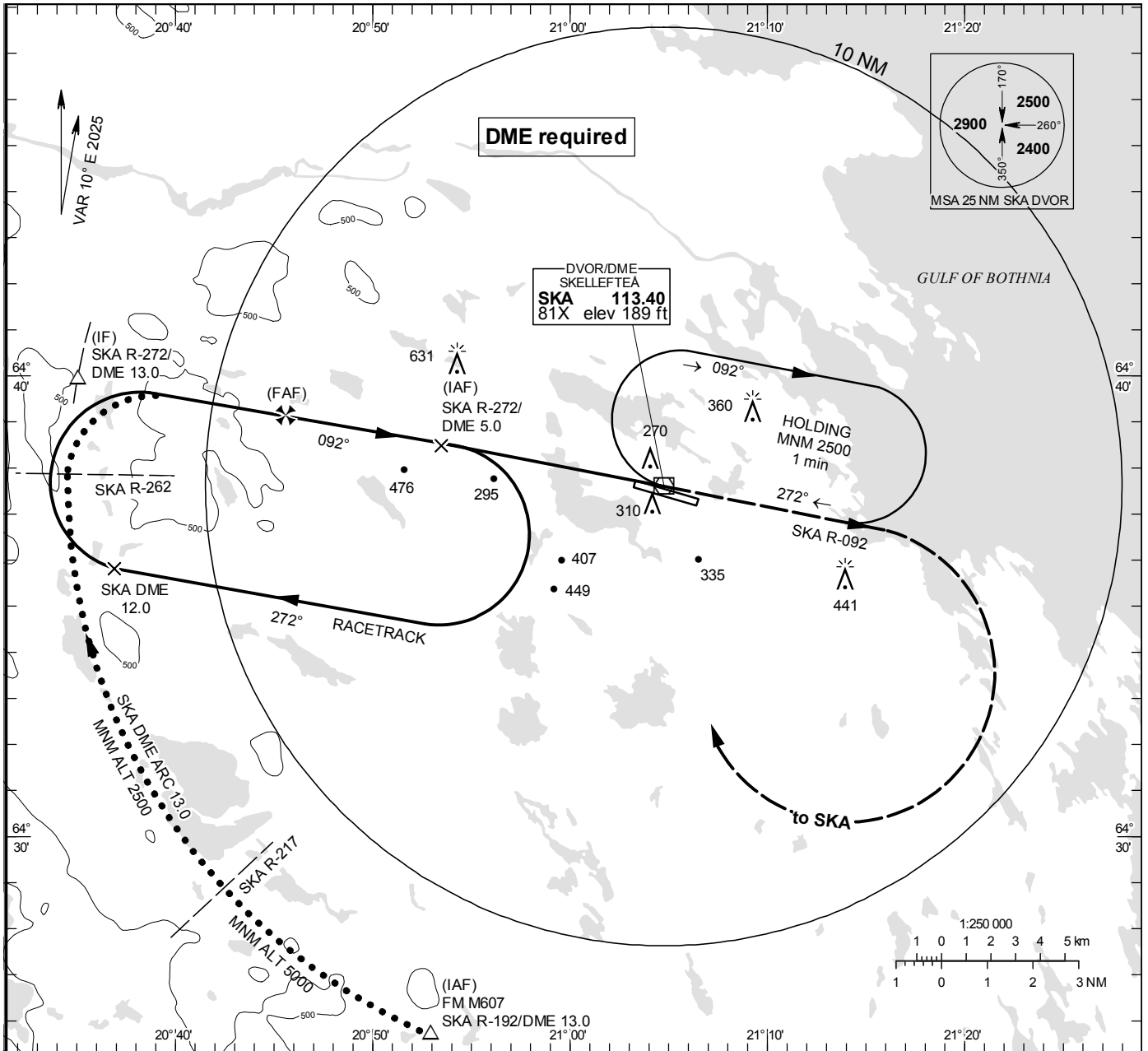


**INSTRUMENT  
APPROACH  
CHART – ICAO**

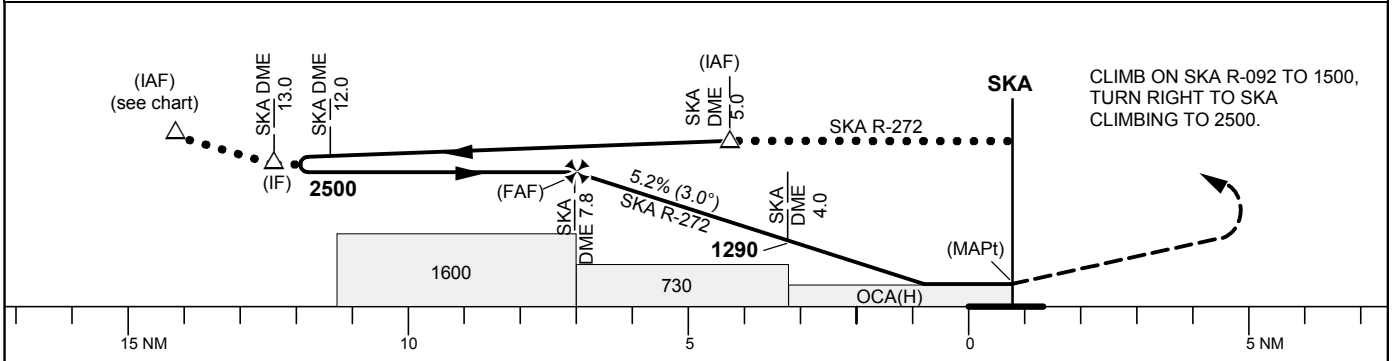
**THR ELEV 158 ft, AD ELEV 158 ft**  
 OCH are related to THR.  
 Circling OCH are related to AD ELEV.  
 BRG are MAG  
 ALT. HGT and ELEV in ft.

SKELLEFTEÅ TOWER 122.055

**VOR RWY 10**



TA 5000 ft AMSL Max speed within racetrack 230 kt IAS \*Timing not authorized for defining the MAPt Final APCH line offset 4°



Cat of ACFT	OCA (H)				Final approach		Distance FAF-MAPt 7.8 NM*					
	A	B	C	D	DME SKA NM	Distance	7	6	5	4	3	2
Straight-in Approach	550 (400)				ALT	2250	1930	1610	1290	970	650	
Circling	630 (480)	710 (560)	850 (700)	1030 (880)	GS	kt	80	100	120	140	160	180
					Time	min:s	5:51	4:41	3:54	3:21	2:55	2:36
					Rate of descent	ft/min	425	530	635	745	850	955