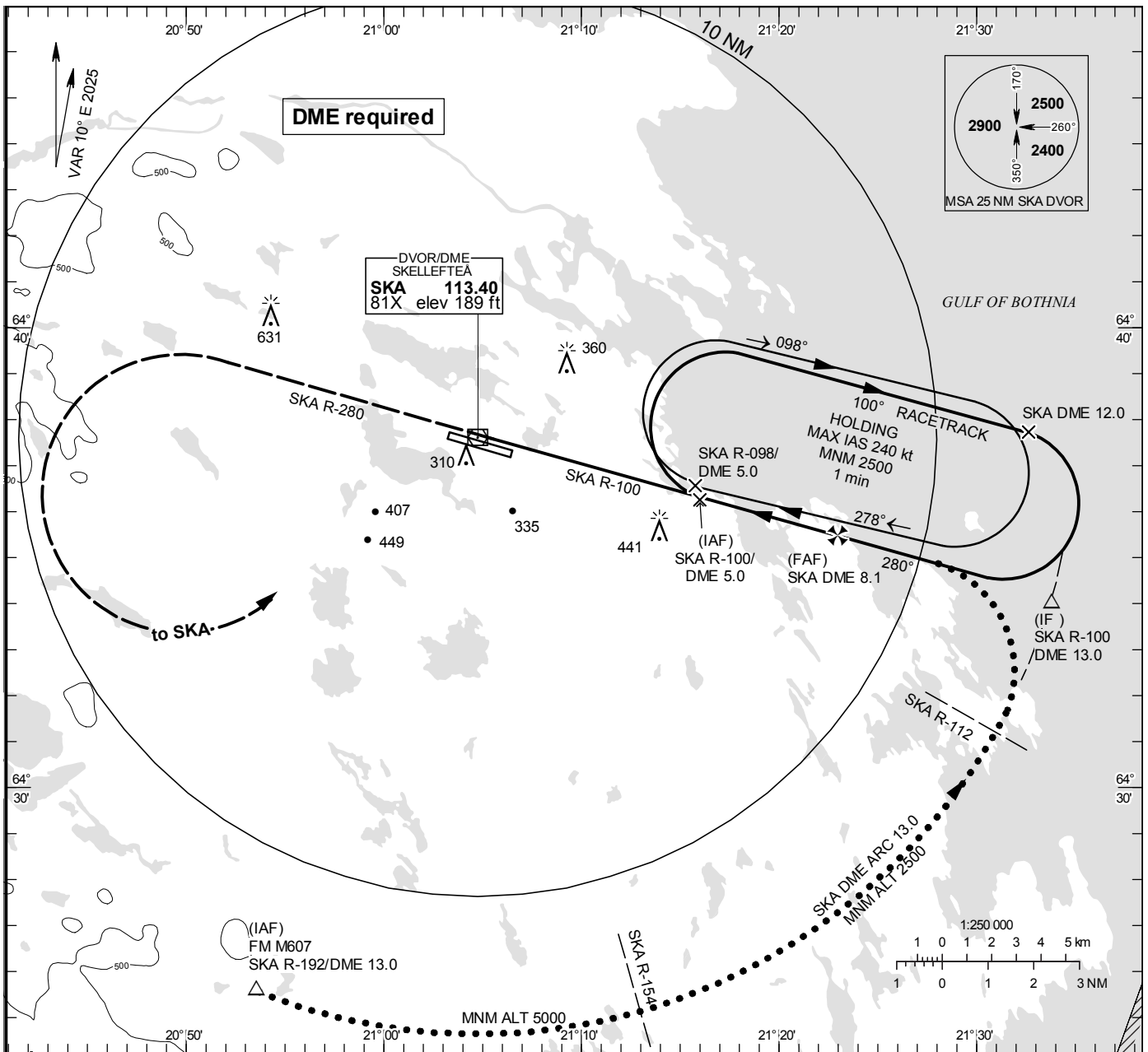


**INSTRUMENT  
APPROACH  
CHART – ICAO**

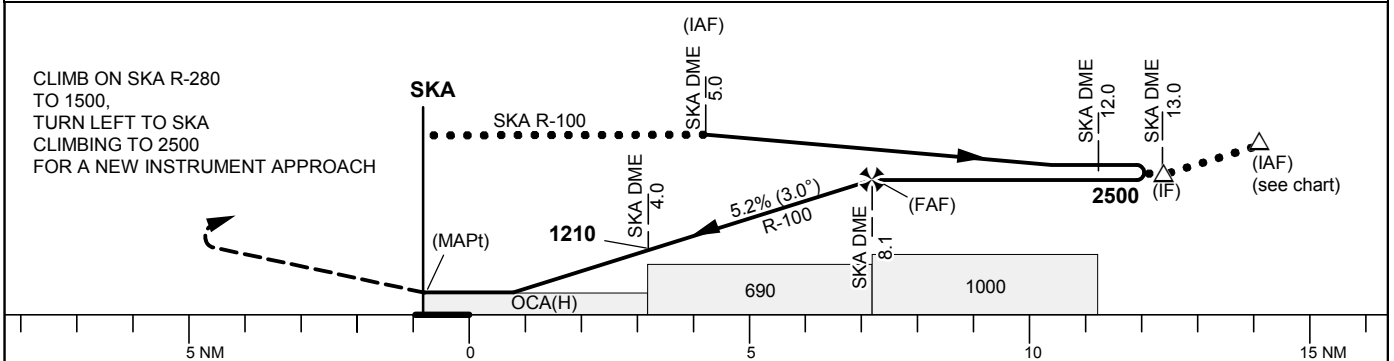
**THR ELEV 122.3 ft, AD ELEV 158 ft**  
 OCH are related to THR.  
 Circling OCH are related to AD ELEV.  
 BRG are MAG  
 ALT, HGT and ELEV in ft.

SKELLEFTEÅ TOWER 122.055

VOR RWY 28



TA 5000 ft AMSL Final APCH line offset 4° \*Timing not authorized for defining the MAPt



OCA (H)					Final approach		Distance FAF-MAPt 8.1 NM*							
Cat of ACFT	A	B	C	D	DME SKA NM		2	3	4	5	6	7		
Straight-in Approach	500 (380)				ALT	570	880	1200	1520	1840	2160			
Circling	630 (480)	710 (560)	850 (700)	1030 (880)	GS	kt	80	100	120	140	160	180		
					Time	min:s	6:03	4:51	4:02	3:28	3:02	2:41		
					Rate of descent	ft/min	425	530	635	745	850	955		