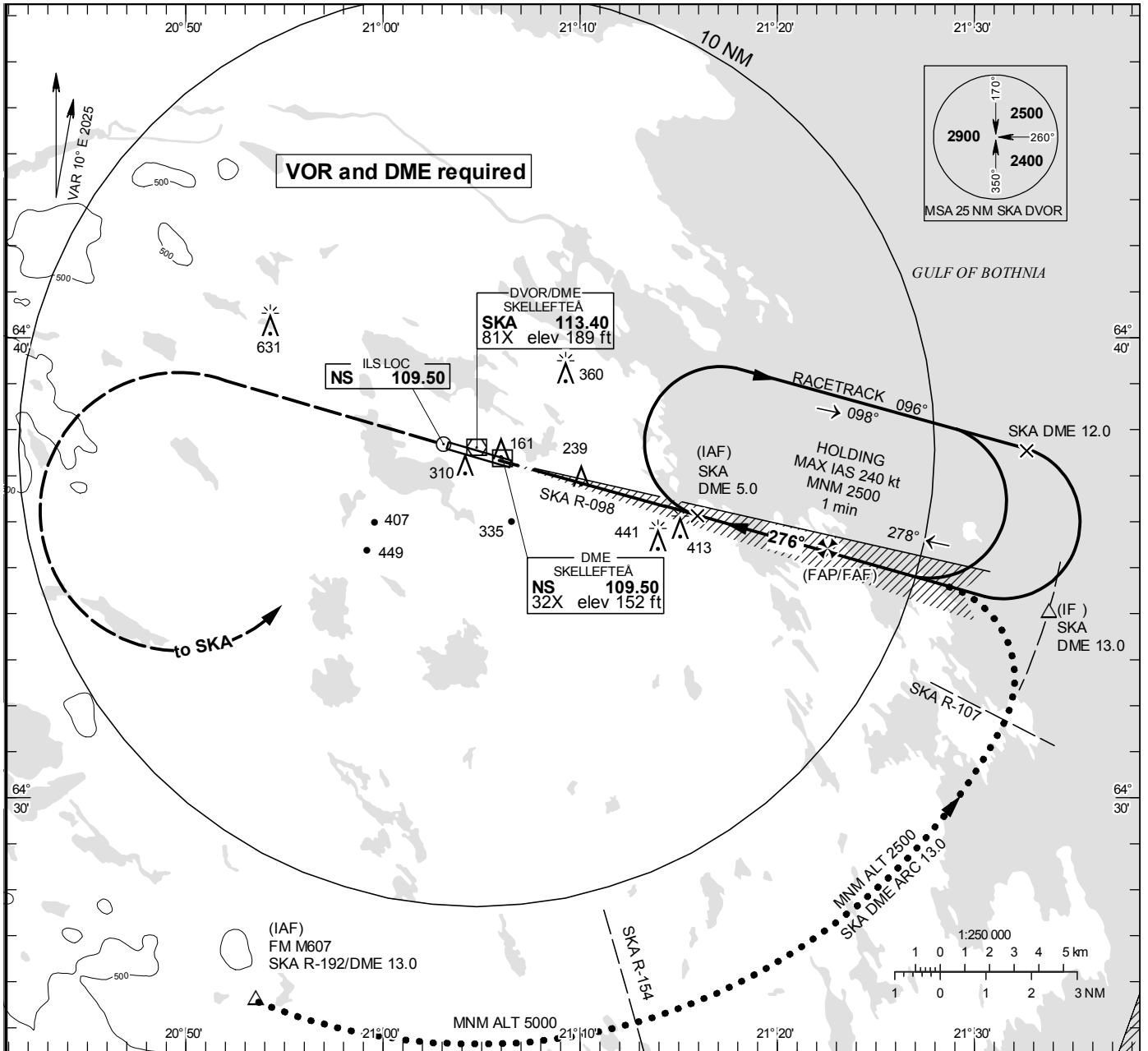


**INSTRUMENT APPROACH CHART – ICAO**

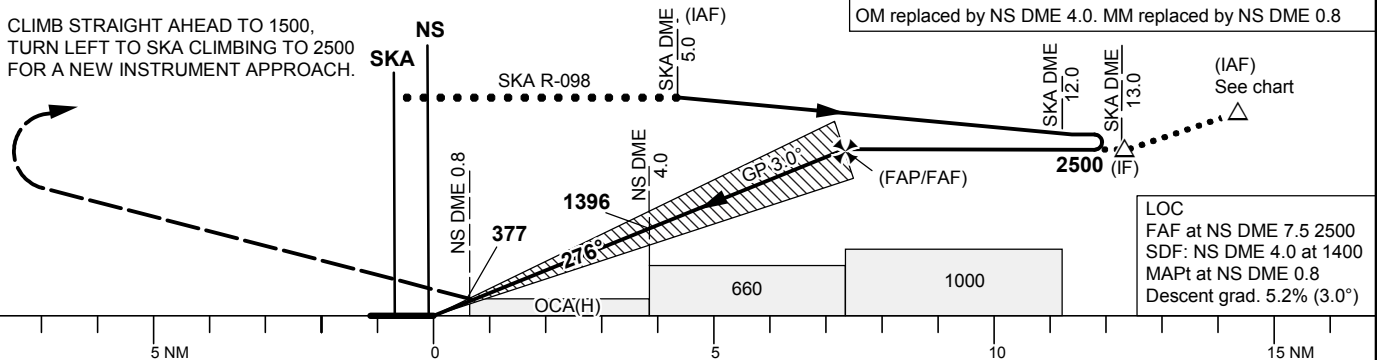
**THR ELEV 122.3 ft, AD ELEV 158 ft**  
 OCH are related to THR.  
 Circling OCH are related to AD ELEV.  
 BRG are MAG  
 ALT, HGT and ELEV in ft.

SKELLEFTEÅ TOWER 122.055

ILS or LOC RWY 28



TA 5000 ft AMSL RDH 53.1 ft \*Timing not authorized for defining the MAPt



OCA (H)					Final approach		Distance FAF-MAPt 6.7 NM*						
Cat of ACFT	A	B	C	D	DME NS NM	2	3	4	5	6	7		
Straight-in Approach	Cat I	263 (140)	272 (149)	282 (159)	296 (173)	ALT	760	1080	1400	1720	2030	2350	
	LOC	490 (370)				GS	kt	80	100	120	140	160	180
Circling		630 (480)	710 (560)	850 (700)	1030 (880)	Time	min:s	5:00	4:00	3:20	2:51	2:30	2:13
						Rate of descent	ft/min	425	530	635	745	850	955