

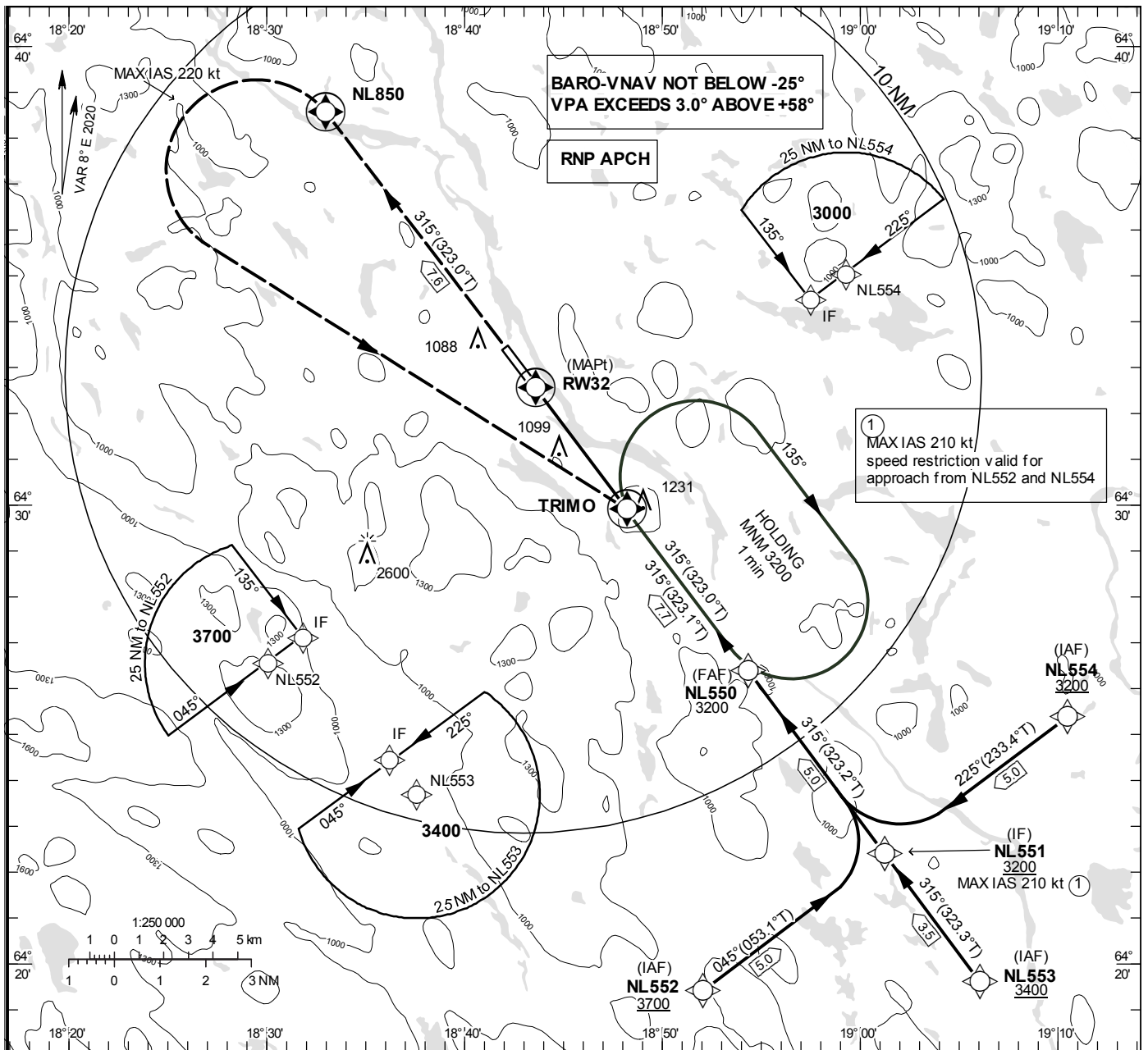
**INSTRUMENT
APPROACH
CHART – ICAO**

THR ELEV 689 ft, AD ELEV 705 ft
OCH are related to THR.
BRG are MAG (True).
ALT, HGT and ELEV in ft.

LYCKSELE INFORMATION 122.230

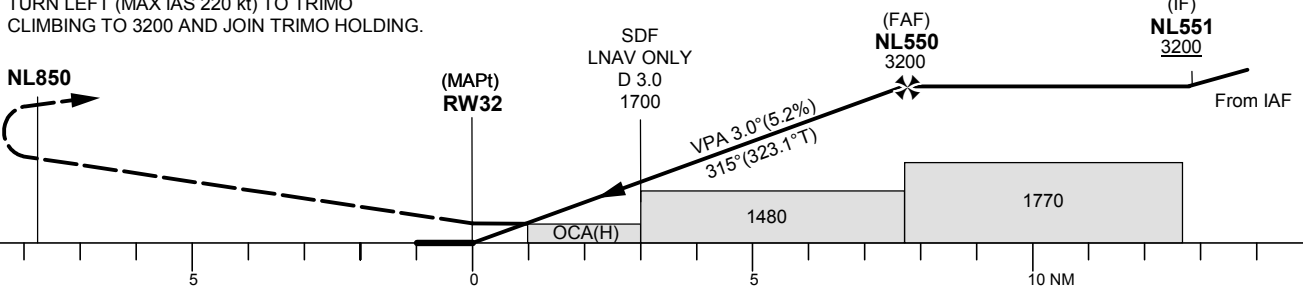
RNP RWY 32

EGNOS Ch 72283 E 32A



TA 5000 ft AMSL RDH 50 ft

CLIMB TO NL850.
TURN LEFT (MAX IAS 220 kt) TO TRIMO
CLIMBING TO 3200 AND JOIN TRIMO HOLDING.



Cat of ACFT	OCA (H)			Final approach Dist to RW32	Distance FAF-MAPt 7.7 NM						
	A	B	C		2	3	4	5	6	7	
LPV	1023 (334)	1035 (346)	1043 (354)	ALT	1380	1690	2010	2330	2650	2970	
LNAV/VNAV	1229 (540)	1241 (552)	1249 (560)	GS	kt	80	100	120	140	160	
LNAV	1350 (670)			Rate of descent	ft/min	425	530	635	745	850	

RNP RWY 32 via NL552

Path Desc	Waypoint Identifier	Fly-over	Course °M(°T)	Dist (NM)	Turn Dir	Altitude	Speed	VPA/RDH	Rec Navaid	Navigation Specification
IF	NL552	-	-	-	-	+3700	-	-	-	RNP APCH
TF	NL551	-	045°(053.1°)	5.0	-	+3200	-210	-	-	RNP APCH

RNP RWY 32 via NL553

Path Desc	Waypoint Identifier	Fly-over	Course °M(°T)	Dist (NM)	Turn Dir	Altitude	Speed	VPA/RDH	Rec Navaid	Navigation Specification
IF	NL553	-	-	-	-	+3400	-	-	-	RNP APCH
TF	NL551	-	315°(323.3°)	3.5	-	+3200	-	-	-	RNP APCH

RNP RWY 32 via NL554

Path Desc	Waypoint Identifier	Fly-over	Course °M(°T)	Dist (NM)	Turn Dir	Altitude	Speed	VPA/RDH	Rec Navaid	Navigation Specification
IF	NL554	-	-	-	-	+3200	-	-	-	RNP APCH
TF	NL551	-	225°(233.4°)	5.0	-	+3200	-210	-	-	RNP APCH

Path Desc	Waypoint Identifier	Fly-over	Course °M(°T)	Dist (NM)	Turn Dir	Altitude	Speed	VPA/RDH	Rec Navaid	Navigation Specification
IF	NL551	-	-	-	-	+3200	-	-	-	RNP APCH
TF	NL550	-	315°(323.2°)	5.0	-	@3200	-	-	-	RNP APCH
TF	RW32	Y	315°(323.1°)	7.7	-	@739	-	-3.00/50	-	RNP APCH
TF	NL850	Y	315°(323.0°)	7.6	-	-	-	-	-	RNP APCH
DF	TRIMO	Y	-	-	L	-	-220	-	-	RNP APCH

ESNL Holding TRIMO

Path Desc	Waypoint Identifier	Fly-over	Course °M(°T)	Dist (NM)	Turn Dir	Altitude	Speed	VPA/RDH	Rec Navaid	Navigation Specification
HM	TRIMO	Y	315°(323.0°)	-	R	+3200	-	-	-	RNP 1

FAS Data Block

RNP RWY 32

Input data

Operation Type	0
SBAS Provider	1
Airport Identifier	ESNL
Runway	32
Runway Direction	0
Approach Performance Designator	0
Route Indicator	
Reference Path Data Selector	0
Reference Path Identifier	E32A
LTP/FTP Latitude	643232.6700N
LTP/FTP Longitude	0184335.7200E
LTP/FTP Ellipsoidal Height (metres)	237.1
FPAP Latitude	643324.2800N
Delta FPAP Latitude (seconds)	51.6100
FPAP Longitude	0184205.1800E
Delta FPAP Longitude (seconds)	-90.5400
Threshold Crossing Height	50.00
TCH Units Selector	0
Glidepath Angle (degrees)	3.00
Course Width (metres)	105.00
Length Offset (metres)	0
HAL (metres)	40.0
VAL (metres)	50.0

Output data

Data Block	10 0C 0E 13 05 20 00 00 01 32 33 05 3C D7 B2 1B 50 5D 09 08 43 1D 34 93 01 A8 3C FD F4 01 2C 01 64 00 C8 FA 01 26 9C 5E
Calculated CRC Value	01269C5E

Required Additional Data

ICAO Code	ES
LTP/FTP Orthometric Height (metres)	210.0
FPAP Orthometric Height (metres)	215.2