

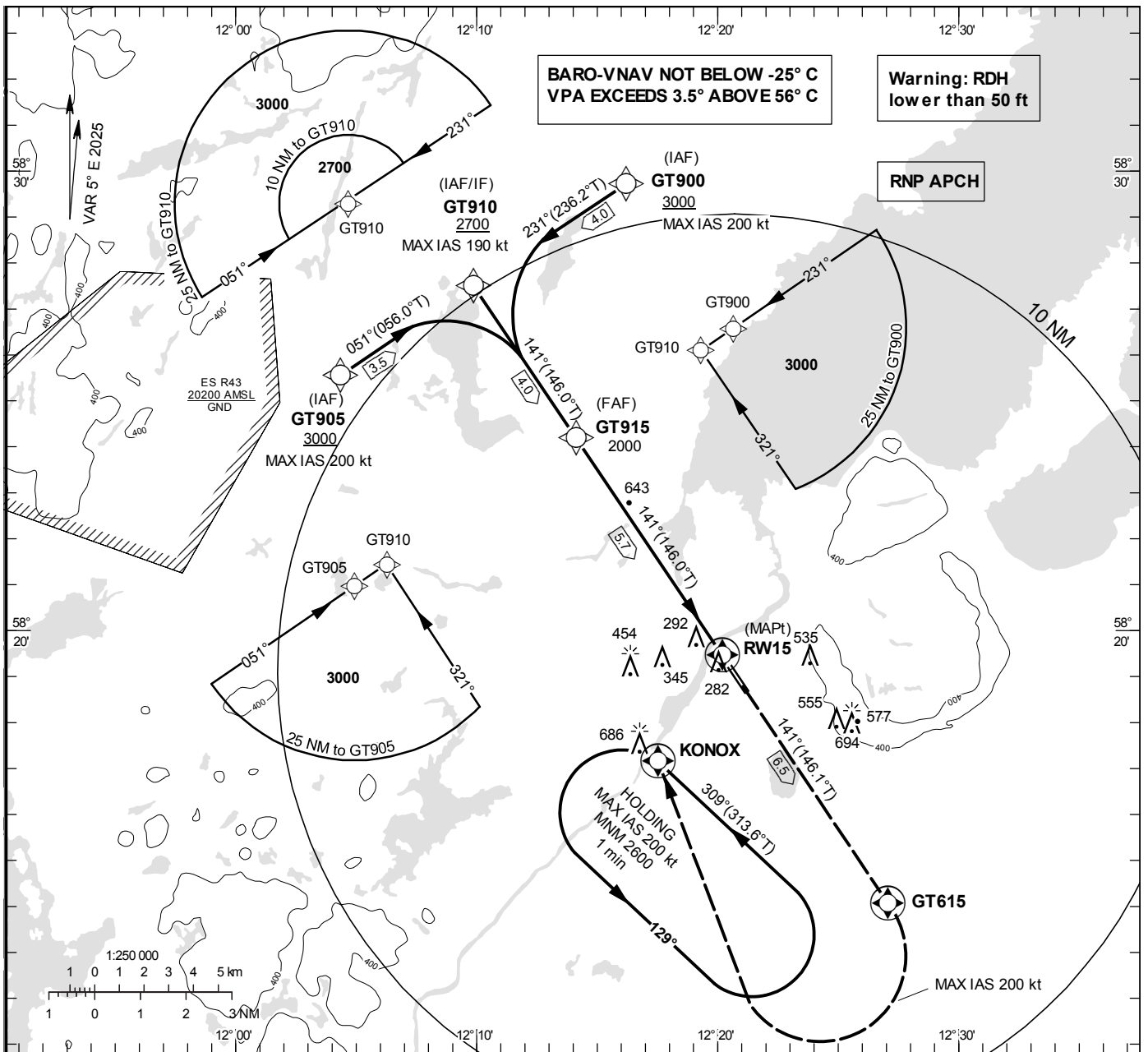
**INSTRUMENT APPROACH CHART - ICAO**

THR ELEV 136 ft, AD ELEV 137 ft  
 OCH are related to THR.  
 BRG are MAG (True).  
 ALT, HGT and ELEV in ft.

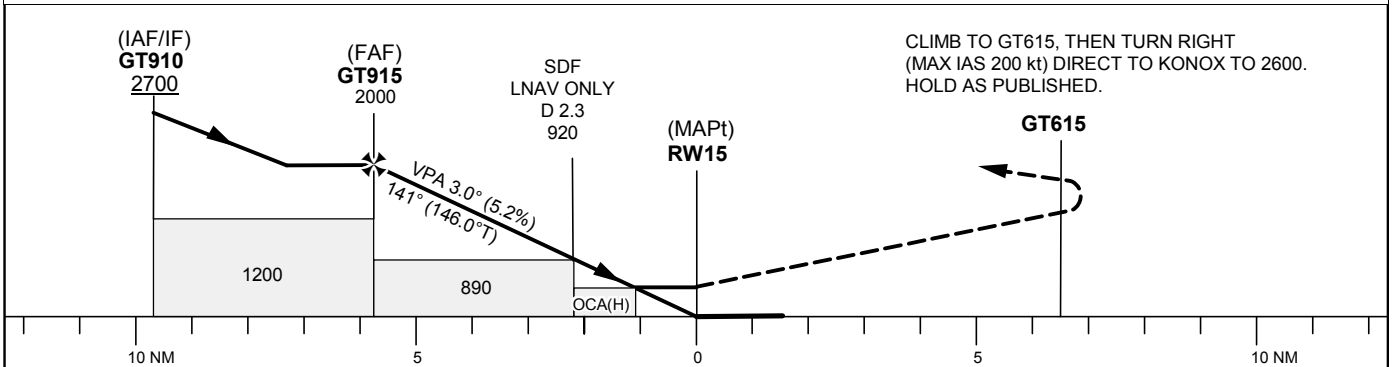
TROLLHÄTTAN TOWER 122.730

RNP RWY 15

EGNOS Ch 54114 E 15A



TA 5000 ft AMSL RDH 42 ft



Cat of ACFT	OCA (H)			Final approach	Distance FAF-MAPt 5.7 NM					
	A	B	C	Dist to RWY15	5	4	3	2		
LPV	413 (277)	425 (289)	433 (297)	ALT	1770	1450	1130	810		
LNAV/VNAV	422 (286)	435 (299)	443 (307)	GS	kt	80	100	120	140	160
LNAV	540 (410)			Rate of descent	ft/min	425	530	635	745	850
Circling	830 (700)	880 (750)	1090 (960)							
Circling SW RWY	650 (520)	750 (620)	1080 (950)							

LFV

CHANGE: VAR, obst, MAX IAS, SDF, MOCA, OCA, BARO-VNAV MAX and MNM temp, table, coding, ES R43 ELEV, editorial

AIRAC AMDT 6/2023

## RNP RWY15 via GT905

Path Desc	Waypoint Identifier	Fly-over	Course °M(°T)	Dist (NM)	Turn Dir	Altitude (ft)	Speed	VPA/RDH	Rec Navaid	Navigation Specification
IF	GT905	-	-	-	-	+3000	-200	-	-	RNP APCH
TF	GT910	-	051° (056.0°)	3.5	-	-	-	-	-	RNP APCH

## RNP RWY15 via GT900

Path Desc	Waypoint Identifier	Fly-over	Course °M(°T)	Dist (NM)	Turn Dir	Altitude (ft)	Speed	VPA/RDH	Rec Navaid	Navigation Specification
IF	GT900	-	-	-	-	+3000	-200	-	-	RNP APCH
TF	GT910	-	231° (236.2°)	4.0	-	-	-	-	-	RNP APCH

Path Desc	Waypoint Identifier	Fly-over	Course °M(°T)	Dist (NM)	Turn Dir	Altitude (ft)	Speed	VPA/RDH	Rec Navaid	Navigation Specification
TF	GT910	-	-	-	-	+2700	-190	-	-	RNP APCH
TF	GT915	-	141° (146.0°)	4.0	-	@2000	-	-	-	RNP APCH
TF	RW15	Y	141° (146.0°)	5.7	-	@178	-	-3.0/42	-	RNP APCH
TF	GT615	Y	141° (146.1°)	6.5	-	-	-	-	-	RNP APCH
DF	KONOX	Y	-	-	R	+2600	-200	-	-	RNP APCH

## ESGT Holding KONOX

Path Desc	Waypoint Identifier	Fly-over	Course °M(°T)	Dist (NM)	Turn Dir	Altitude (ft)	Speed	VPA/RDH	Rec Navaid	Navigation Specification
HM	KONOX	Y	309° (313.6°)	-	L	+2600	-200	-	-	RNAV 1

## FAS Data Block

## RNP RWY 15

## Input data

Operation Type	0
SBAS Provider	1 (EGNOS)
Airport Identifier	ESGT
Runway	15
Runway Letter	0 (None)
Approach Performance Designator	0
Route Indicator	
Reference Path Data Selector	0
Reference Path Identifier	E15A
LTP/FTP Latitude	581927.2570N
LTP/FTP Longitude	0122011.7795E
LTP/FTP Ellipsoidal Height (metres)	76.0
FPAP Latitude	581841.4060N
Delta FPAP Latitude (seconds)	-45.8510
FPAP Longitude	0122110.3760E
Delta FPAP Longitude (seconds)	58.5965
Threshold Crossing Height	42.0
TCH Units Selector	0 (feet)
Glidepath Angle (degrees)	3.00
Course Width (metres)	105.00
Length Offset (metres)	0
HAL (metres)	40.0
VAL (metres)	50.0

## Output data

Data Block	10 14 07 13 05 0F 00 00 01 35 31 05 32 B1 07 19 07 57 4B 05 F8 16 CA 99 FE C9 C9 01 A4 01 2C 01 64 00 C8 FA ED A6 B6 31
Calculated CRC Value	EDA6B631

## Required Additional Data

ICAO Code	ES
LTP/FTP Orthometric Height (metres)	41.4