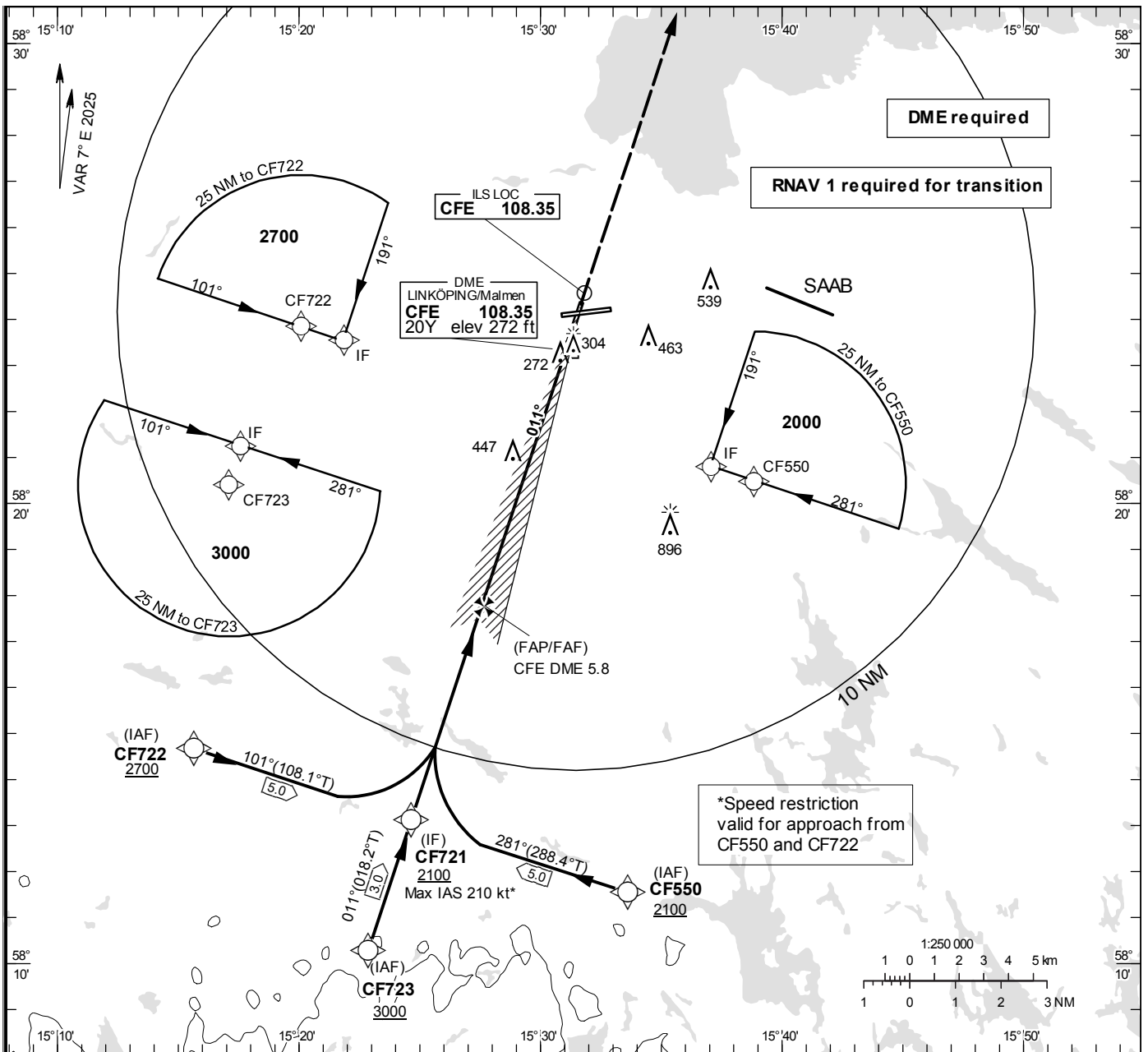


**INSTRUMENT
APPROACH
CHART – ICAO**

THR ELEV 250.7 ft, AD ELEV 309 ft
 OCH are related to THR.
 Circling OCH are related to AD ELEV.
 BRG are MAG
 ALT, HGT and ELEV in ft.

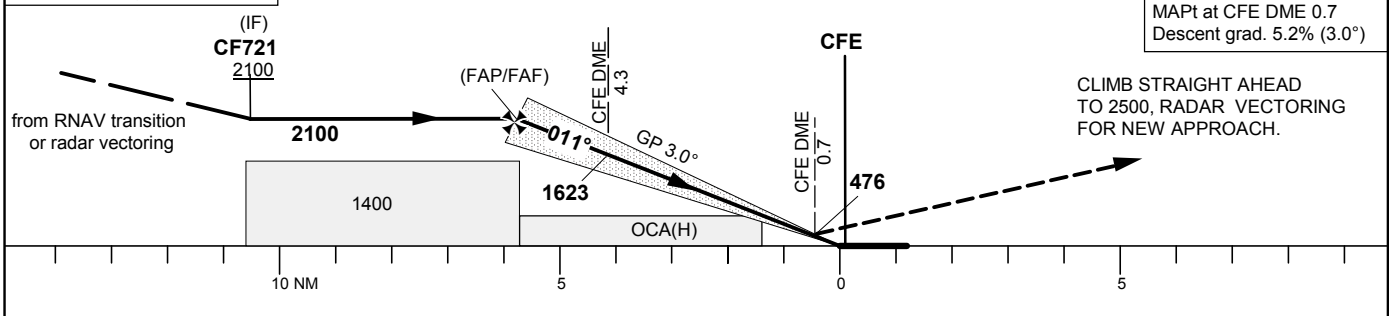
MALMEN TOWER	129.800
ÖSTGÖTA APPROACH	132.955
	135.850

ILS z or LOC z RWY 01



TA 5000 ft AMSL **RDH 50.0 ft** *Timing not authorized for defining the MAPt

OM replaced by CFE DME 4.3
 MM replaced by CFE DME 0.7



OCA (H)					Final approach	LOC Distance FAF-MAPt 5.1 NM*						
Cat of ACFT	A	B	C	D	DME CFE NM	5	4	3	2			
Straight-in Approach	410 (159)	418 (167)	429 (178)	441 (190)	ALT	1850	1530	1210	890			
	700 (450)				GS	kt	80	100	120	140	160	180
Circling	760 (460)	840 (540)	940 (640)	1290 (990)	Time	min:s	3:50	3:04	2:33	2:11	1:55	1:42
					Rate of descent	ft/min	425	530	635	745	850	955