

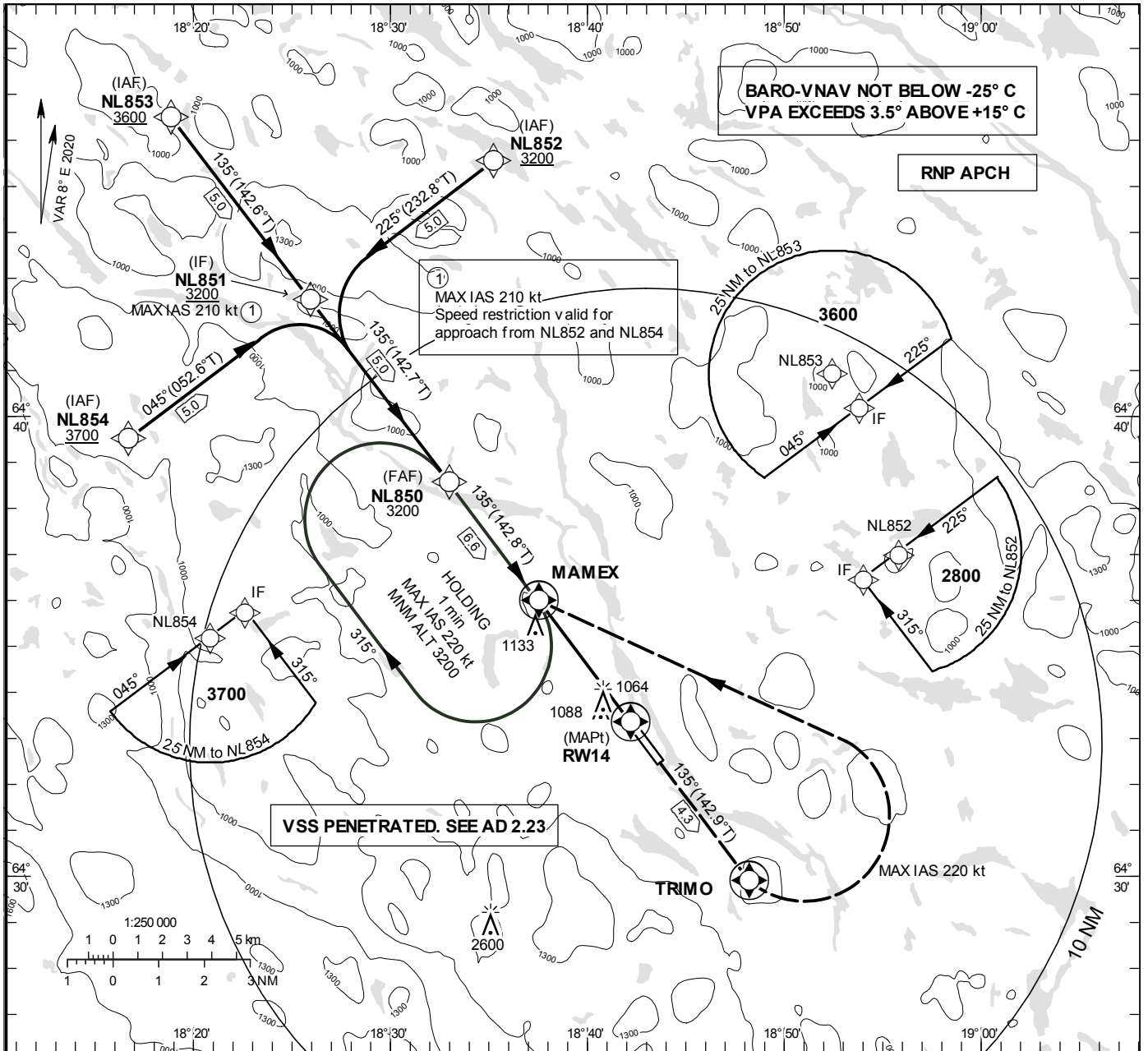
**INSTRUMENT
APPROACH
CHART – ICAO**

THR ELEV 704.5 ft, AD ELEV 705 ft
 OCH are related to THR.
 BRG are MAG (True).
 ALT, HGT and ELEV in ft.

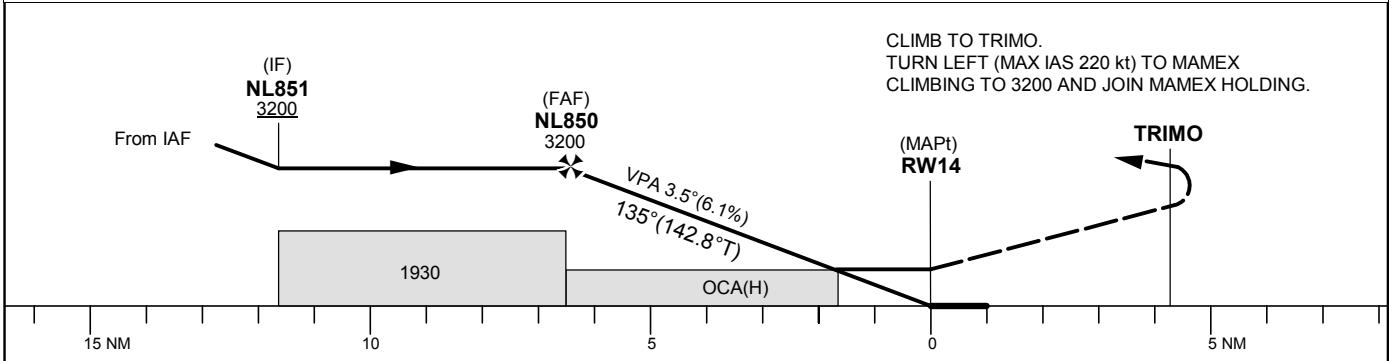
LYCKSELE INFORMATION 122.230

RNP RWY 14

EGNOS Ch 52350 E 14A



TA 5000 ft AMSL RDH 50 ft



| Cat of ACFT | OCA (H) | | | Final approach | Distance FAF-MAPt 6.6 NM | | | | | |
|-------------|------------|------------|------------|-----------------|--------------------------|------|------|------|------|-----|
| | A | B | C | Dist to RW14 | 6 | 5 | 4 | 3 | 2 | |
| LPV | 1201 (497) | 1216 (512) | 1228 (524) | ALT | 2980 | 2610 | 2240 | 1870 | 1500 | |
| LNAV /VNAV | 1225 (521) | 1241 (537) | 1252 (548) | GS | kt | 80 | 100 | 120 | 140 | 160 |
| LNAV | 1380 (680) | | | Rate of descent | ft/min | 495 | 620 | 745 | 865 | 990 |

RNP RWY 14 via NL852

| Path Desc | Waypoint Identifier | Fly-over | Course °M(°T) | Dist (NM) | Turn Dir | Altitude | Speed | VPA/RDH | Rec Navaid | Navigation Specification |
|-----------|---------------------|----------|---------------|-----------|----------|----------|-------|---------|------------|--------------------------|
| IF | NL852 | - | - | - | - | +3200 | - | - | - | RNP APCH |
| TF | NL851 | - | 225°(232.8°) | 5.0 | - | +3200 | -210 | - | - | RNP APCH |

RNP RWY 14 via NL853

| Path Desc | Waypoint Identifier | Fly-over | Course °M(°T) | Dist (NM) | Turn Dir | Altitude | Speed | VPA/RDH | Rec Navaid | Navigation Specification |
|-----------|---------------------|----------|---------------|-----------|----------|----------|-------|---------|------------|--------------------------|
| IF | NL853 | - | - | - | - | +3600 | - | - | - | RNP APCH |
| TF | NL851 | - | 135°(142.6°) | 5.0 | - | +3200 | - | - | - | RNP APCH |

RNP RWY 14 via NL854

| Path Desc | Waypoint Identifier | Fly-over | Course °M(°T) | Dist (NM) | Turn Dir | Altitude | Speed | VPA/RDH | Rec Navaid | Navigation Specification |
|-----------|---------------------|----------|---------------|-----------|----------|----------|-------|---------|------------|--------------------------|
| IF | NL854 | - | - | - | - | +3700 | - | - | - | RNP APCH |
| TF | NL851 | - | 045°(052.6°) | 5.0 | - | +3200 | -210 | - | - | RNP APCH |

| Path Desc | Waypoint Identifier | Fly-over | Course °M(°T) | Dist (NM) | Turn Dir | Altitude | Speed | VPA/RDH | Rec Navaid | Navigation Specification |
|-----------|---------------------|----------|---------------|-----------|----------|----------|-------|----------|------------|--------------------------|
| IF | NL851 | - | - | - | - | +3200 | - | - | - | RNP APCH |
| TF | NL850 | - | 135°(142.7°) | 5.0 | - | @3200 | - | - | - | RNP APCH |
| TF | RW14 | Y | 135°(142.8°) | 6.6 | - | @755 | - | -3.50/50 | - | RNP APCH |
| TF | TRIMO | Y | 135°(142.9°) | 4.3 | - | - | - | - | - | RNP APCH |
| DF | MAMEX | Y | - | - | L | - | -220 | - | - | RNP APCH |

ESNL Holding MAMEX

| Path Desc | Waypoint Identifier | Fly-over | Course °M(°T) | Dist (NM) | Turn Dir | Altitude | Speed | VPA/RDH | Rec Navaid | Navigation Specification |
|-----------|---------------------|----------|---------------|-----------|----------|----------|-------|---------|------------|--------------------------|
| HM | MAMEX | Y | 135°(142.8°) | - | R | +3200 | -220 | - | - | RNP 1 |

FAS Data Block

RNP RWY 14

Input data

| | |
|-------------------------------------|---------------|
| Operation Type | 0 |
| SBAS Provider | 1 |
| Airport Identifier | ESNL |
| Runway | 14 |
| Runway Direction | 0 |
| Approach Performance Designator | 0 |
| Route Indicator | |
| Reference Path Data Selector | 0 |
| Reference Path Identifier | E14A |
| LTP/FTP Latitude | 643320.3600N |
| LTP/FTP Longitude | 0184212.0500E |
| LTP/FTP Ellipsoidal Height (metres) | 241.8 |
| FPAP Latitude | 643232.6400N |
| Delta FPAP Latitude (seconds) | -47.7200 |
| FPAP Longitude | 0184335.7700E |
| Delta FPAP Longitude (seconds) | 83.7200 |
| Threshold Crossing Height | 50.00 |
| TCH Units Selector | 0 |
| Glidepath Angle (degrees) | 3.50 |
| Course Width (metres) | 105.00 |
| Length Offset (metres) | 0 |
| HAL (metres) | 40.0 |
| VAL (metres) | 50.0 |

Output data

| | |
|----------------------|--|
| Data Block | 10 0C 0E 13 05 0E 00 00 01 34 31 05 D0 4B B4 1B A4 CF 06 08 72 1D 30 8B FE 10 8E 02 F4 01 5E 01 64 00 C8 FA C1 D3 5B 24 |
| Calculated CRC Value | C1D35B24 |

Required Additional Data

| | |
|-------------------------------------|-------|
| ICAO Code | ES |
| LTP/FTP Orthometric Height (metres) | 214.7 |
| FPAP Orthometric Height (metres) | 210.0 |