

VISUAL APPROACH CHART - ICAO

1:250000



AD ELEV 101 FEET

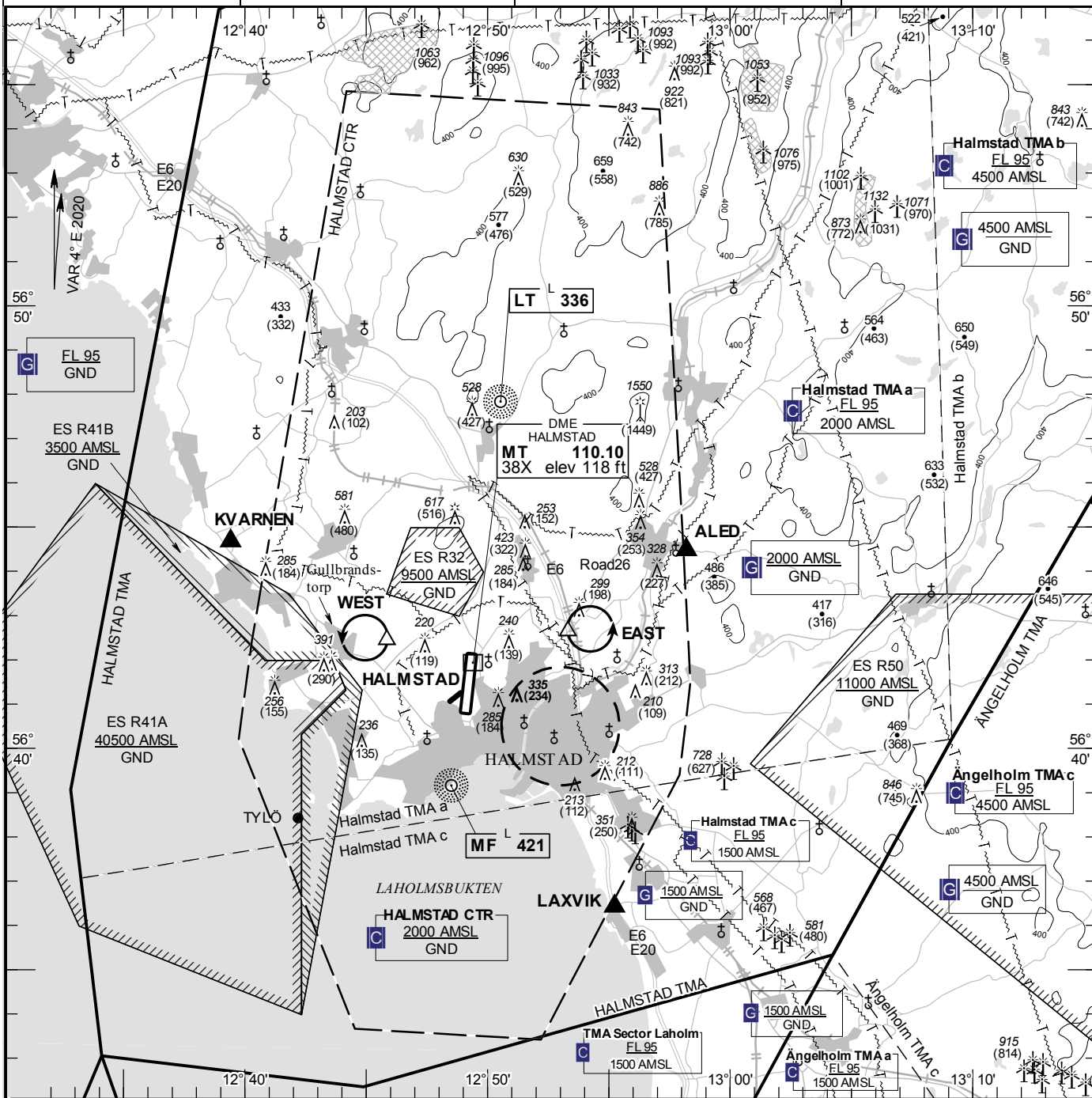
ELEV and ALT in ft
HGT in ft above AD ELEV

TA 5000 AMSL

**HALMSTAD TOWER 130.105
135.055**

AD 2 ESMT 6-1

HALMSTAD SWEDEN



Communication failure

- 1 SQUAWK 7600
- 2 Enter CTR via KVARNEN – Holding WEST at or below 1500 ft AMSL to traffic circuit. Transmit blind your intentions.
- 3 Flash LDG-lights and watch TWR for optical signals.

RWY NR	THR ELEV	PAPI (MEHT)
01	64 ft	Left/3.25° (56 ft)
19	84.2 ft	Left/3.00° (51 ft)

Entry / exit point

KVARNEN	564440N 0123925E
ALED	564428N 0125812E
LAXVIK	563625N 0125514E

Holding

- EAST:** Hold east of intersection E6 and road 26, east of point 564238N 0125319E
- WEST:** Hold at crossroad east Gullbrandstorp, west of point 564226N 0124550E

Remark

Sector LAHOLM: ATC provider see ENR 2.1

Legend

See GEN 2.3