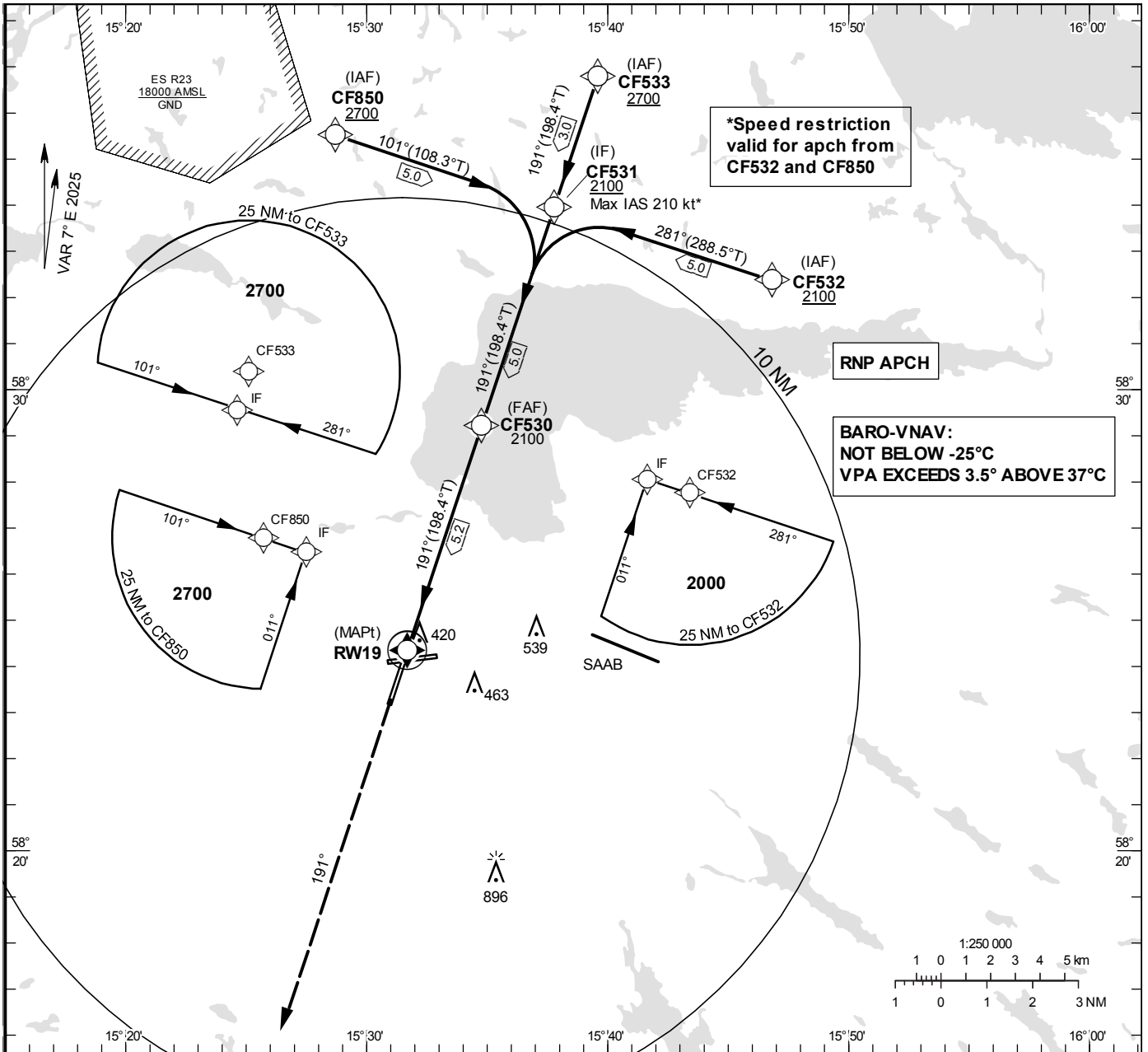


**INSTRUMENT APPROACH CHART – ICAO**

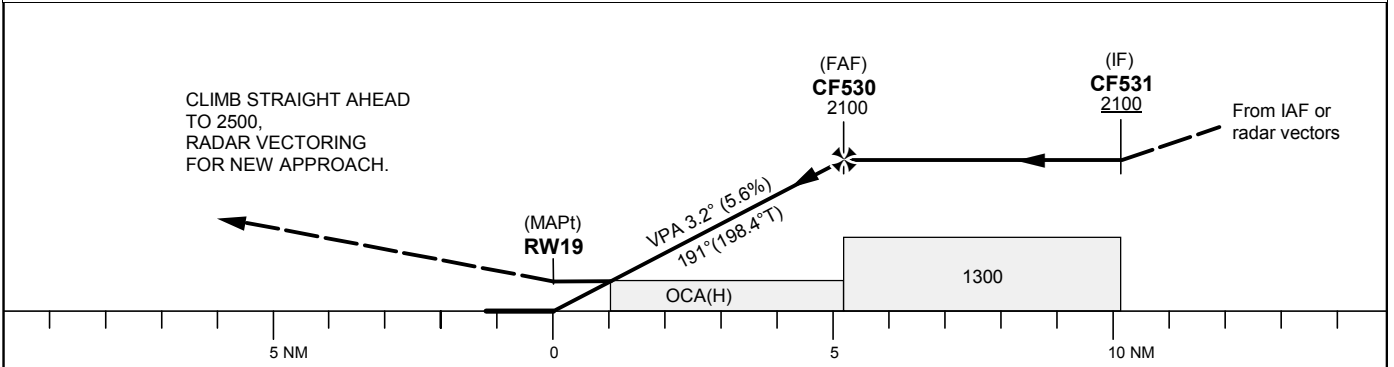
**THR ELEV 295.4 ft, AD ELEV 309 ft**  
 OCH are related to THR.  
 BRG are MAG (True).  
 ALT, HGT and ELEV in ft.

MALMEN TOWER	129.800
ÖSTGÖTA APPROACH	132.955
	135.850

**RNP RWY 19 (LNAV/VNAV, LNAV only)**



TA 5000 ft AMSL RDH 55.8 ft



Cat of ACFT	OCA (H)				Final approach Dist to RW19	Distance FAF-MAPT 5.2 NM						
	A	B	C	D		1	2	3	4	5		
LNAV/VNAV	550 (255)	562 (267)	570 (275)	580 (285)	ALT	690	1030	1370	1710	2050		
LNAV	670 (380)				GS	kt	80	100	120	140	160	180
Circling	760 (460)	840 (540)	940 (640)	1290 (990)	Rate of descent	ft/min	455	565	680	795	905	1020

## RNP RWY 19 via CF850

Path Desc	Waypoint Identifier	Fly-over	Course °M(°T)	Dist (NM)	Turn Dir	Altitude	Speed	VPA/RDH	Rec Navaid	Navigation Specification
IF	CF850	-	-	-	-	+2700	-	-	-	RNP APCH
TF	CF531	-	101°(108.3°)	5.0	-	-	-210	-	-	RNP APCH

## RNP RWY 19 via CF533

Path Desc	Waypoint Identifier	Fly-over	Course °M(°T)	Dist (NM)	Turn Dir	Altitude	Speed	VPA/RDH	Rec Navaid	Navigation Specification
IF	CF533	-	-	-	-	+2700	-	-	-	RNP APCH
TF	CF531	-	191°(198.4°)	3.0	-	-	-	-	-	RNP APCH

## RNP RWY 19 via CF532

Path Desc	Waypoint Identifier	Fly-over	Course °M(°T)	Dist (NM)	Turn Dir	Altitude	Speed	VPA/RDH	Rec Navaid	Navigation Specification
IF	CF532	-	-	-	-	+2100	-	-	-	RNP APCH
TF	CF531	-	281°(288.5°)	5.0	-	-	-210	-	-	RNP APCH

Path Desc	Waypoint Identifier	Fly-over	Course °M(°T)	Dist (NM)	Turn Dir	Altitude	Speed	VPA/RDH	Rec Navaid	Navigation Specification
IF	CF531	-	-	-	-	+2100	-	-	-	RNP APCH
TF	CF530	-	191°(198.4°)	5.0	-	+2100	-	-	-	RNP APCH
TF	RW19	Y	191°(198.4°)	5.2	-	@351	-	-3.2/56	-	RNP APCH
CA	-	-	191°(198.3°)	-	-	@2500	-	-	-	RNP APCH
VM	-	-	191°	-	-	-	-	-	-	RNP APCH