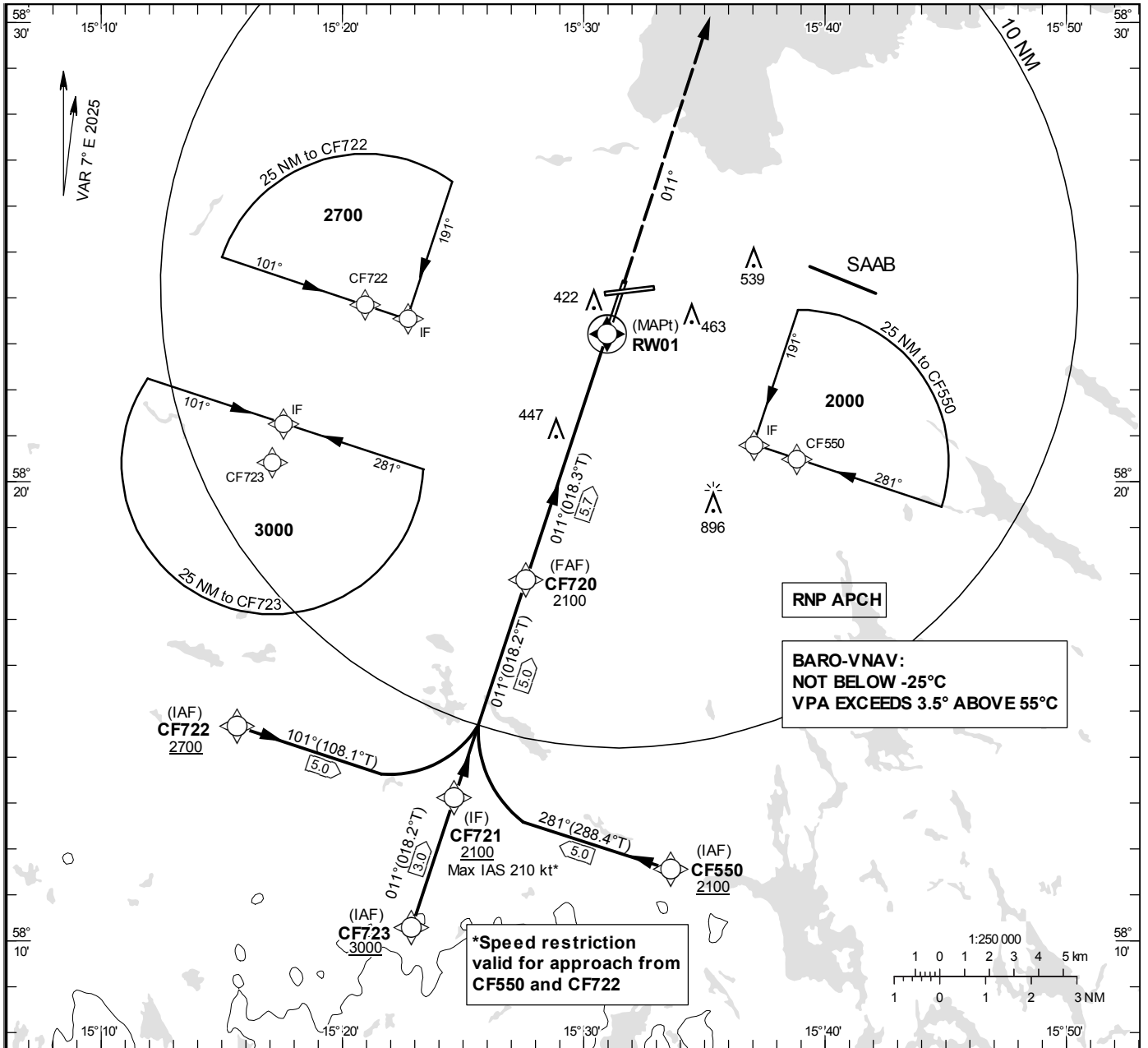


**INSTRUMENT
APPROACH
CHART – ICAO**

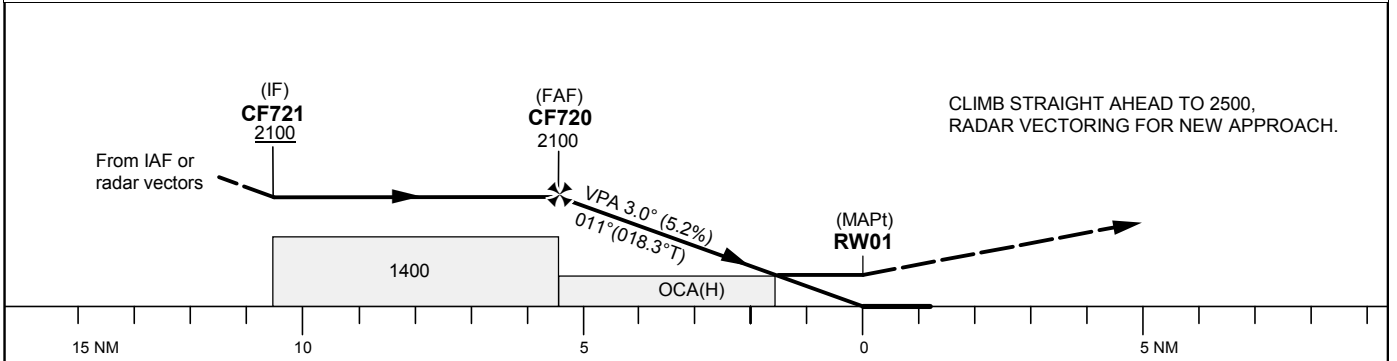
THR ELEV 250.7 ft, AD ELEV 309 ft
 OCH are related to THR.
 BRG are MAG (True).
 ALT, HGT and ELEV in ft.

MALMEN TOWER	129.800
ÖSTGÖTA APPROACH	132.955
	135.850

**RNP RWY 01
(LNAV/VNAV, LNAV only)**



TA 5000 ft AMSL RDH 50 ft



Cat of ACFT	OCA (H)				Final approach Dist to RW01	Distance FAF - MAPt 5.7 NM						
	A	B	C	D		5	4	3	2			
LNAV/VNAV	552 (302)	565 (315)	573 (323)	583 (333)	1890	1570	1260	940				
LNAV	700 (450)				GS	kt	80	100	120	140	160	180
Circling	760 (460)	840 (540)	940 (640)	1290 (990)	Rate of descent	ft/min	425	530	635	745	850	955

RNP RWY 01 via CF550

Path Desc	Waypoint Identifier	Fly-over	Course °M(°T)	Dist (NM)	Turn Dir	Altitude	Speed	VPA/RDH	Rec Navaid	Navigation Specification
IF	CF550	-	-	-	-	+2100	-	-	-	RNP APCH
TF	CF721	-	281°(288.4°)	5.0	-	-	-210	-	-	RNP APCH

RNP RWY 01 via CF723

Path Desc	Waypoint Identifier	Fly-over	Course °M(°T)	Dist (NM)	Turn Dir	Altitude	Speed	VPA/RDH	Rec Navaid	Navigation Specification
IF	CF723	-	-	-	-	+3000	-	-	-	RNP APCH
TF	CF721	-	011°(018.2°)	3.0	-	-	-	-	-	RNP APCH

RNP RWY 01 via CF722

Path Desc	Waypoint Identifier	Fly-over	Course °M(°T)	Dist (NM)	Turn Dir	Altitude	Speed	VPA/RDH	Rec Navaid	Navigation Specification
IF	CF722	-	-	-	-	+2700	-	-	-	RNP APCH
TF	CF721	-	101°(108.1°)	5.0	-	-	-210	-	-	RNP APCH

Path Desc	Waypoint Identifier	Fly-over	Course °M(°T)	Dist (NM)	Turn Dir	Altitude	Speed	VPA/RDH	Rec Navaid	Navigation Specification
IF	CF721	-	-	-	-	+2100	-	-	-	RNP APCH
TF	CF720	-	011°(018.2°)	5.0	-	+2100	-	-	-	RNP APCH
TF	RW01	Y	011°(018.3°)	5.7	-	@301	-	-3.0/50	-	RNP APCH
CA	-	-	011°(018.3°)	-	-	@2500	-	-	-	RNP APCH
VM	-	-	011°	-	-	-	-	-	-	RNP APCH