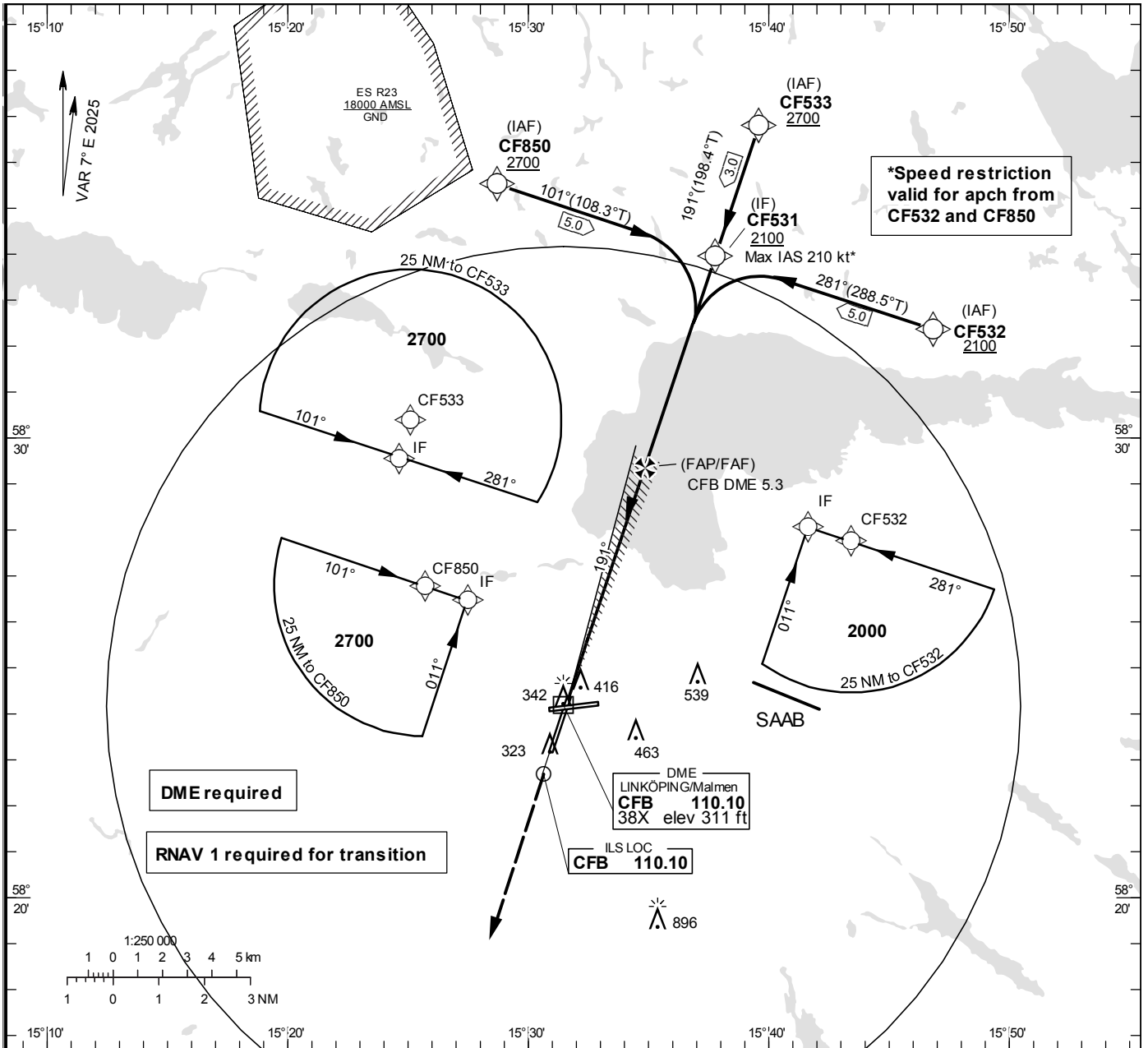


**INSTRUMENT APPROACH CHART – ICAO**

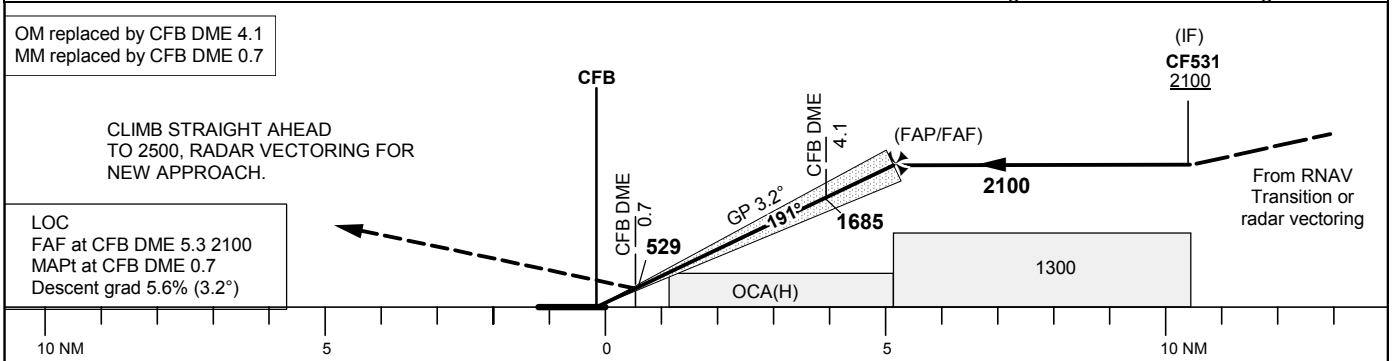
**THR ELEV 295.4 ft, AD ELEV 309 ft**  
 OCH are related to THR.  
 Circling OCH are related to AD ELEV.  
 BRG are MAG  
 ALT. HGT and ELEV in ft.

MALMEN TOWER	129.800
ÖSTGÖTA APPROACH	132.955
	135.850

**ILS or LOC RWY 19**



**TA 5000 ft AMSL** RDH 55.8 ft \*Timing not authorized for defining the MAPt



OCA (H)					Final approach	LOC Distance FAF-MAPt 4.6 NM*							
Cat of ACFT	A	B	C	D	DME CFB NM	2	3	4	5				
Straight-in Approach	Cat I	458 (162)	466 (170)	476 (180)	486 (190)	970	1310	1650	1990				
	LOC	650 (360)				GS	kt	80	100	120	140	160	180
Circling		760 (460)	840 (540)	940 (640)	1290 (990)	Time	min:s	3:27	2:46	2:18	1:58	1:44	1:32
						Rate of descent	ft/min	455	565	680	795	905	1020