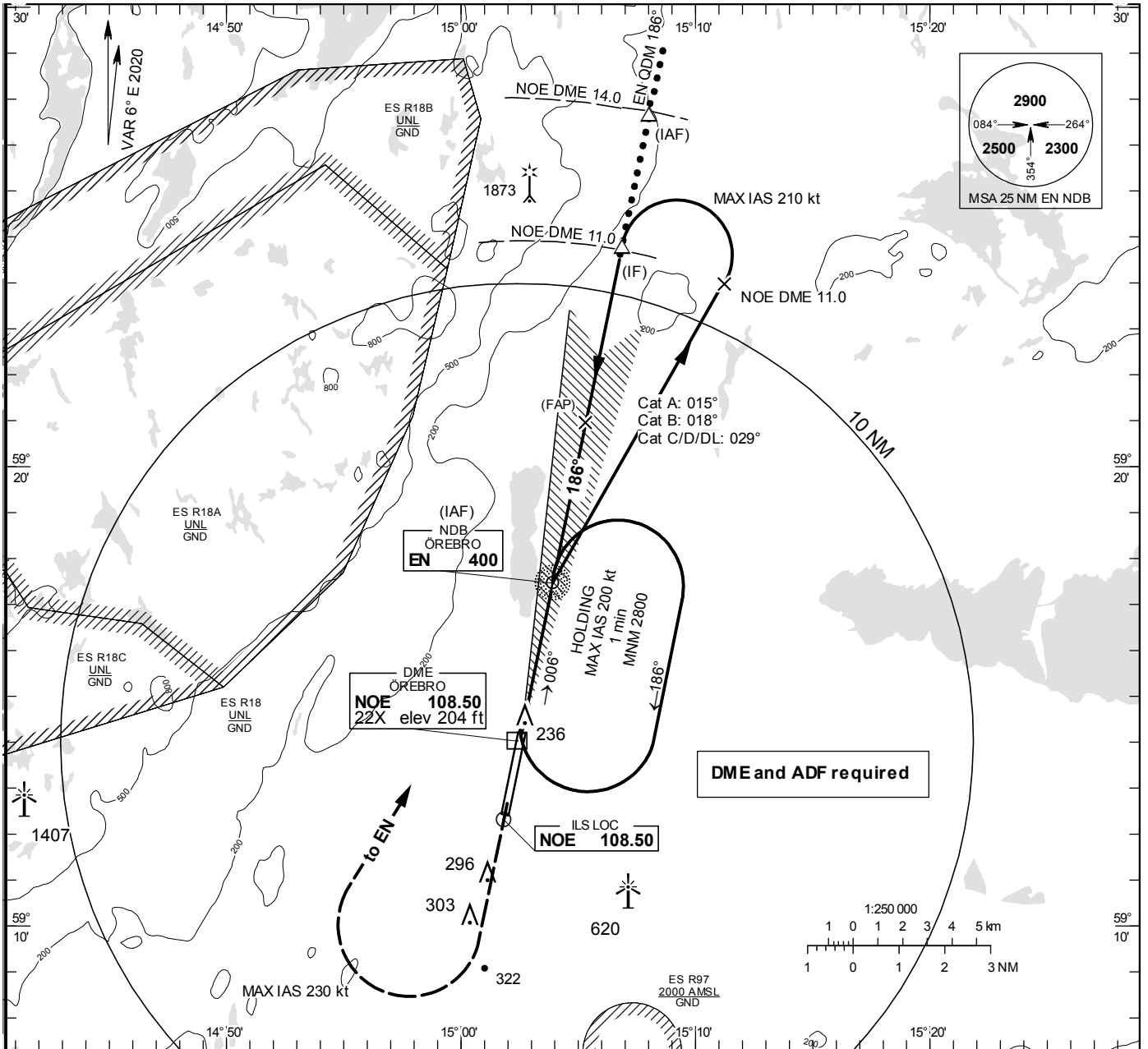


INSTRUMENT APPROACH CHART – ICAO

THR ELEV 191.1 ft, AD ELEV 192 ft
 OCH are related to THR.
 Circling OCH are related to AD ELEV.
 BRG are MAG
 ALT. HGT and ELEV in ft.

ÖREBRO TOWER 120.280

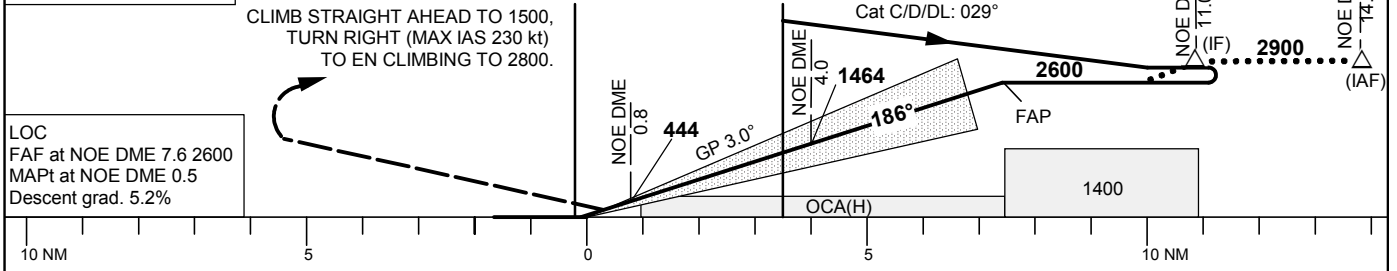
ILS y or LOC y RWY 19



TA 5000 ft AMSL RDH 54.1 ft *Timing not authorized for defining the MAPt

OM replaced by NOE DME 4.0 MM replaced by NOE DME 0.8 MAX SPEED within base turn 210 kt IAS MAX SPEED within missed approach turn 230 kt IAS

* No turn before MAPt



OCA (H)						Final approach	Distance FAF-MAPt 7.1 NM*						
Cat of ACFT	A	B	C	D	D _L	NOE DME NM	2	3	4	5	6	7	
Straight-in Approach	Cat I	354 (162)	361 (169)	373 (181)	383 (191)	387 (195)	ALT	820	1140	1460	1780	2100	2420
	LOC	570 (380)					GS	kt	80	100	120	140	160
Circling	600 (410)	690 (500)	1020 (830)			Rate of descent	ft/min	425	535	635	745	850	955