

All times in UTC

**Örebro AD (ESOE)
Rättelse till IAC ILS z or LOC z RWY 19 och
FAS data block RNP RWY 19**

**ILS z or LOC z RWY 19
Daterad 15 JUN 2023**

IF i profilvy ska vara OE415.

Bifogad: Rättad IAC ESOE 5-4.

**FAS data block RNP RWY 19
Daterad 15 JUN 2023**

Korrekt värde för HAL (horizontal alert limit) ska vara 40 m.

Bifogad: Rättat FAS data block.

Ändra i enlighet med detta i AIRAC AIP AMDT 4/23
WEF 15 JUN 2023.

Inarbetas i AIP 10 AUG 2023.

**Örebro AD (ESOE)
Correction to IAC ILS z or LOC z RWY 19 and
FAS data block RNP RWY 19**

**ILS z or LOC z RWY 19
Dated 15 JUN 2023**

IF in profile view shall read OE415.

Attached: Corrected IAC ESOE 5-4.

**FAS data block RNP RWY 19
Dated 15 JUN 2023**

Correct value for HAL (horizontal alert limit) shall read 40 m.

Attached: Updated FAS data block.

Amend accordingly in AIRAC AIP AMDT 4/23
WEF 15 JUN 2023.

Will be incorporated in AIP 10 AUG 2023.

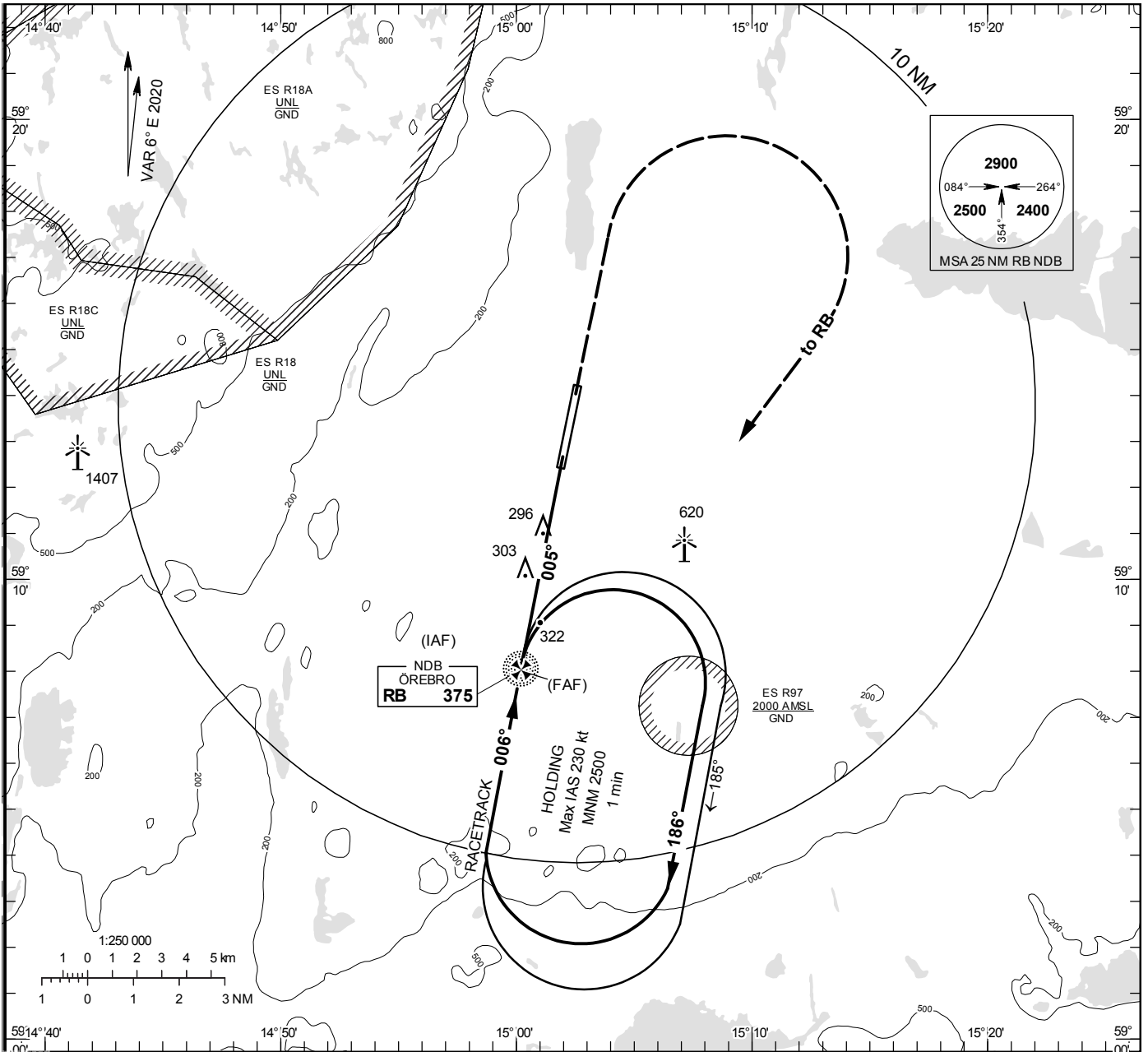
INTENTIONALLY BLANK

**INSTRUMENT
APPROACH
CHART – ICAO**

THR ELEV 161.3 ft, AD ELEV 192 ft
 OCH are related to THR.
 Circling OCH are related to AD ELEV.
 BRG are MAG
 ALT. HGT and ELEV in ft.

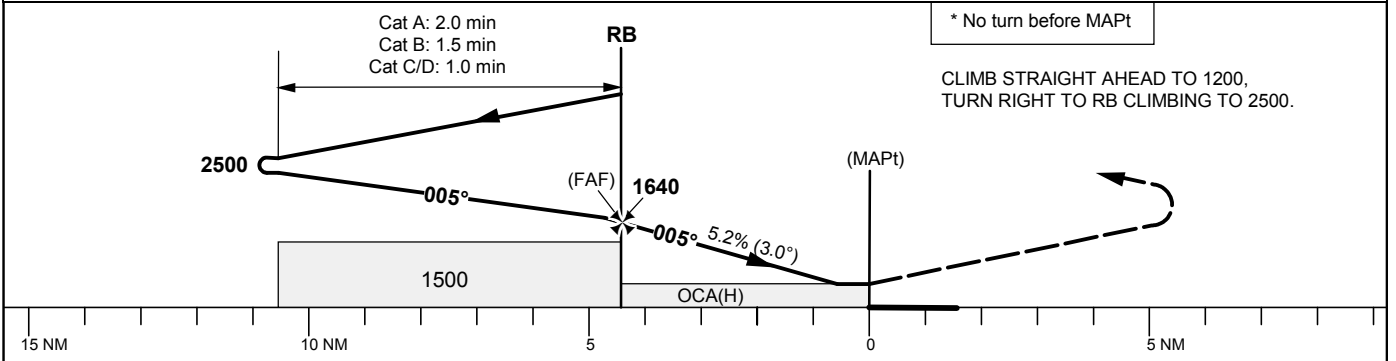
ÖREBRO TOWER 120.280

NDB RWY 01



TA 5000 ft AMSL

Final APCH line 1° offset



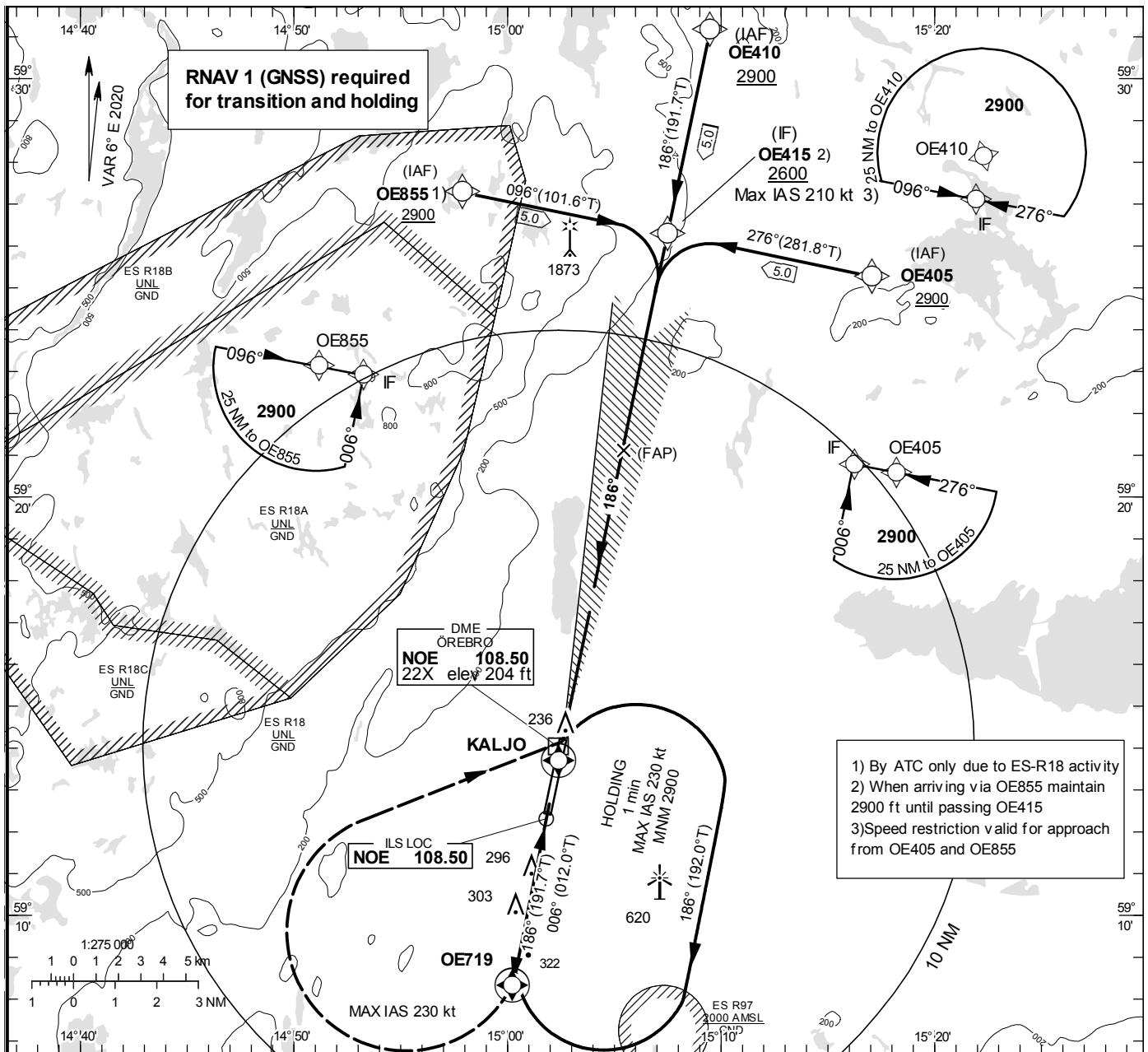
Cat of ACFT	OCA (H)				Final approach DME NOE NM	Distance FAF-MAPt 4.5 NM*						
	A	B	C	D		6	5	4	3			
Straight-in Approach	570 (410)				1620	1300	980	660				
Circling	600 (410)	690 (500)	1020 (830)		GS	kt	80	100	120	140	160	180
					Time	min:s	3:23	2:42	2:15	1:56	1:41	1:30
					Rate of descent	ft/min	425	535	635	745	850	955

ILS z or LOC z RWY 19

ÖREBRO TOWER 120.280

THR ELEV 191.1 ft, AD ELEV 192 ft
 OCH are related to THR.
 Circling OCH are related to AD ELEV.
 BRG are MAG
 ALT. HGT and ELEV in ft.

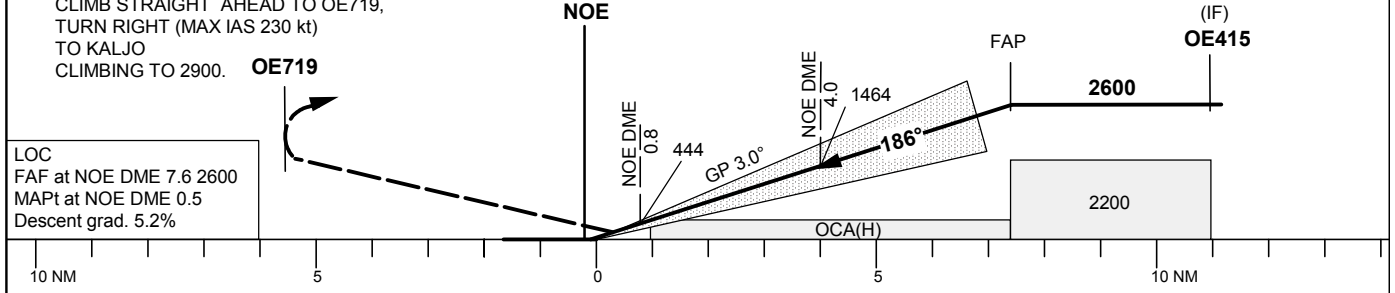
INSTRUMENT
 APPROACH
 CHART – ICAO



1) By ATC only due to ES-R18 activity
 2) When arriving via OE855 maintain 2900 ft until passing OE415
 3) Speed restriction valid for approach from OE405 and OE855

TA 5000 ft AMSL RDH 54.1 ft *Timing not authorized for defining the MAPT

MAX SPEED within missed approach turn 230 kt IAS * No turn before MAPT OM replaced by NOE DME 4.0 MMR replaced by NOE DME 0.8



OCA (H)						Final approach							
Cat of ACFT	A	B	C	D	DL	LOC Distance FAF-MAPT 7.1 NM*							
						NOE DME NM	2	3	4	5	6	7	
Straight-in Approach	Cat I	354 (162)	361 (169)	373 (181)	383 (191)	387 (195)	820	1140	1460	1780	2100	2420	
	LOC	570 (380)					GS	kt	80	100	120	140	160
Circling	600 (410)	690 (500)	1020 (830)			Rate of descent	ft/min	425	535	635	745	850	955

FAS Data Block

RNP RWY 19

Input data

Operation Type	0
SBAS Provider	1
Airport Identifier	ESOE
Runway	19
Runway Letter	0 (None)
Approach Performance Designator	0
Route Indicator	
Reference Path Data Selector	0
Reference Path Identifier	E19A
LTP/FTP Latitude	591410.7025N
LTP/FTP Longitude	0150234.9030E
LTP/FTP Ellipsoidal Height (metres)	86.9
FPAP Latitude	591227.1680N
Delta FPAP Latitude (seconds)	-103.5345
FPAP Longitude	0150153.1705E
Delta FPAP Longitude (seconds)	-41.7325
Threshold Crossing Height	54.0
TCH Units Selector	0 (feet)
Glidepath Angle (degrees)	3.00
Course Width (metres)	105.00
Length Offset (metres)	0
HAL (metres)	40.0
VAL (metres)	50.0

Output data

Data Block	10 05 0F 13 05 13 00 00 01 39 31 05 1D E5 6B 19 2E AD 74 06 65 17 23 D7 FC F7 B9 FE 1C 02 2C 01 64 00 C8 FA C1 46 AE 14
Calculated CRC Value	C146AE14

Required Additional Data

ICAO Code	ES
LTP/FTP Orthometric Height (metres)	58.3

INTENTIONALLY BLANK