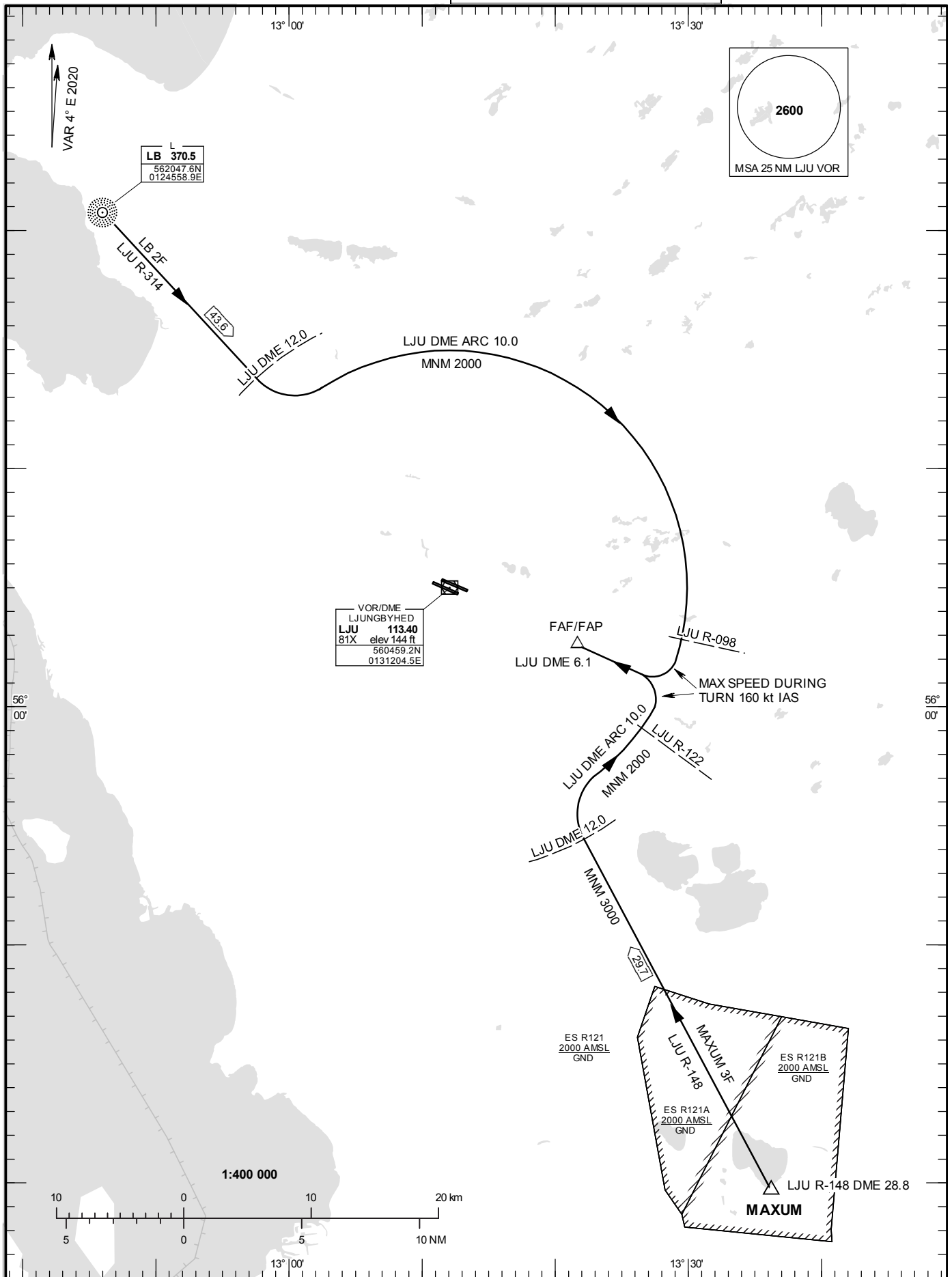


STANDARD INSTRUMENT
DEPARTURE AND ARRIVAL
CHART (SID/STAR) - ICAO

HGT and ALT in ft
BRG are MAG
TA 5000 ft AMSL

LJUNGBYHED TOWER	130.705
LJUNGBYHED GROUND	121.655
LJUNGBYHED APPROACH	129.555

STAR RWY 29L



ARRIVAL (STAR) RWY 29L

REMARK

Descent to a minimum altitude for an arrival route must not be initiated until an air traffic control clearance to this altitude or an approach clearance has been received.

LIMA BRAVO TWO FOXTROT ARRIVAL (LB 2F)

At LB intercept LJU R-314. At LJU DME 12.0 turn left and proceed on LJU DME ARC 10, not below 2000 ft*. At LJU R-098 turn right (max speed 160 kt IAS during turn) to intercept LOC DA, not below 2000 ft until FAF/FAP LJU DME 6.1.

**For VOR/DME apch: At LJU R-100 turn right (max speed 160 kt IAS during turn) to intercept R-112, not below 2000 ft until FAF LJU DME 6.1.*

MAXUM THREE FOXTROT ARRIVAL (MAXUM 3F)

At MAXUM intercept LJU R-148. At LJU DME 12.0 turn right and proceed on LJU DME ARC 10, not below 3000 ft until established on LJU DME ARC 10*. At LJU R-122 turn left (max speed 160 kt IAS during turn) to intercept LOC DA, not below 2000 ft until FAF/FAP LJU DME 6.1.

**For VOR/DME apch: At LJU R-124 turn left (max speed 160 kt IAS during turn) to intercept R-112, not below 2000 ft until FAF LJU DME 6.1.*