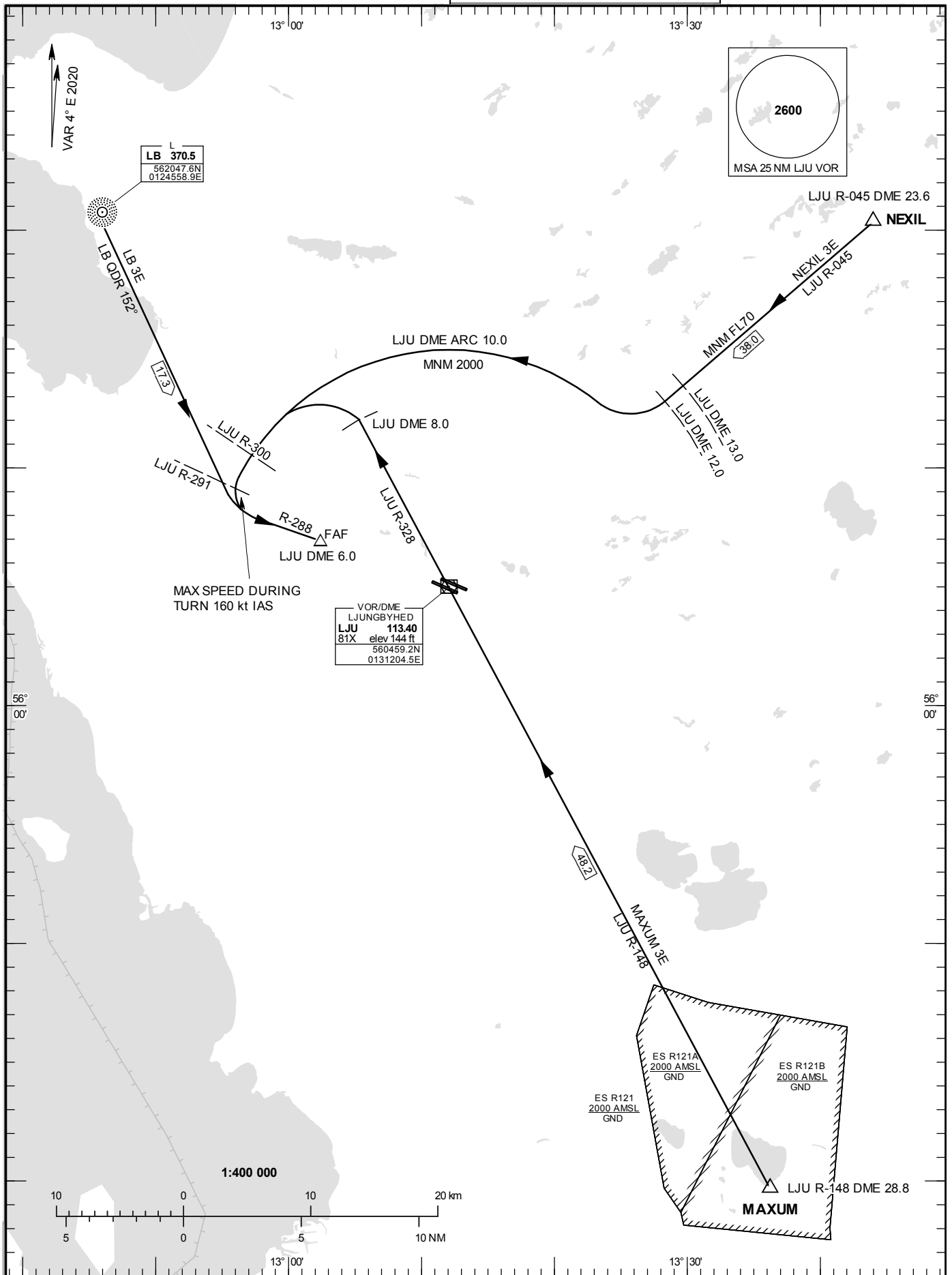


STANDARD INSTRUMENT  
DEPARTURE AND ARRIVAL  
CHART (SID/STAR) - ICAO

HGT and ALT in ft  
BRG are MAG  
TA 5000 ft AMSL

LJUNGBYHED TOWER	130.705
LJUNGBYHED GROUND	121.655
LJUNGBYHED APPROACH	129.555

STAR RWY 11R



## ARRIVAL (STAR) RWY 11R

### REMARK

Descent to a minimum altitude for an arrival route must not be initiated until an air traffic control clearance to this altitude or an approach clearance has been received.

### LIMA BRAVO THREE ECHO ARRIVAL (LB 3E)

At LB proceed on LB QDR 152°. At LJU R-291 turn left to intercept LJU R-288, not below 2000 ft until FAF LJU DME 6.0.

### MAXUM THREE ECHO ARRIVAL (MAXUM 3E)

At MAXUM, intercept LJU R-148 and proceed to LJU. At LJU intercept and proceed on LJU R-328. At LJU DME 8.0, turn left to establish on LJU DME ARC 10.0 not below 2000 ft. At LJU R-300 turn left (max speed 160 kt IAS during turn) to intercept LJU R-288, not below 2000 ft until FAF LJU DME 6.0.

### NEXIL THREE ECHO ARRIVAL (NEXIL 3E)

At NEXIL intercept LJU R-045, not below FL70 until LJU DME 13.0. At LJU DME 12.0 turn right, intercept and proceed on LJU DME ARC 10, not below 2000 ft. At LJU R-300 turn left (max speed 160 kt IAS during turn) to intercept R-288 not below 2000 ft until FAF LJU DME 6.0.