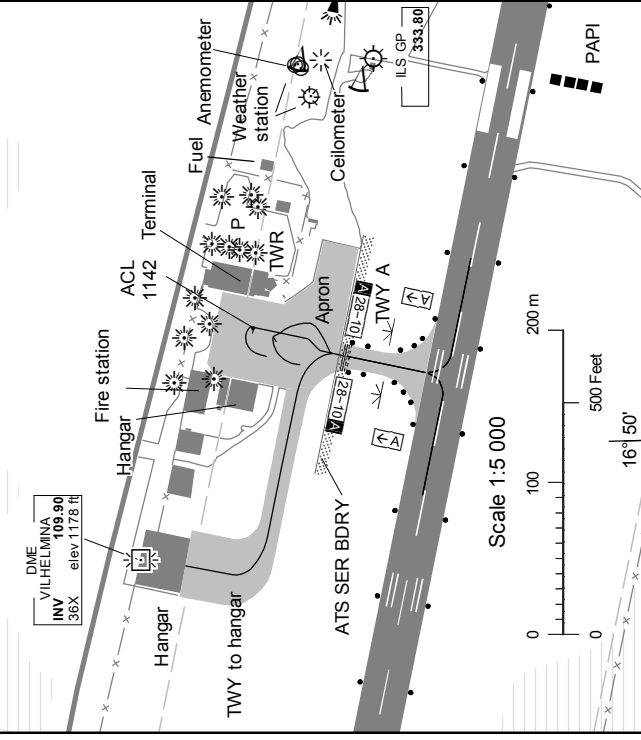


ARP 643443N 0165023E  
AD ELEV 1141 FEET  
LEGEND See GEN 2.3  
Dimensions in m, ELEV in ft

TWY NR	WIDTH	Surface Bearing strength	Day marking		Taxiway lighting	
			Centerline Holding	Edge Centerline	RGL Stopbar	RGL
A	15 m	ASPH PCN 12 F/B/X/U	CL	EDGE	EDGE	RGL
TO HANGAR	10 m	ASPH	CL			

INS Coordinates for Aircraft Stands		
APRON Surface Bearing strength	NR	COORD
ASPH PCN 12 F/B/X/U		

PARKING CHART



RWY NR	TRUE & MAG BRG	THR PSN Geoid undulation END PSN	Bearing strength	THR ELEV and highest ELEV of TDZ of precision APCH RWY	Declared distances			Approach and runway lighting					
					TORA	TODA	ASDA	LDA	APCH	THR TRID TDZ	VASIS (MEHT)	Edge	End
10	103.14° 096° MAG	643450.20N 0164905.97E GUND 96 ft END RWY: 643439.18N 0165055.73E	PCN 12 F/B/X/U	THR 1139 ft	1500	1500	1500	1500	SALS 420 m L/L/L/H	THR Green	PAPI Left/3.00° (21.7 ft)	1500/60 m White Caution zone 600 m yellow L/L/L/H	Red
28	283.17° 276° MAG	643440.96N 0165038.13E GUND 96.4 ft	PCN 12 F/B/X/U	THR 1139.2 ft TDZ 1140 ft	1500	1500	1500	1260	Calvert Cat 1 900 m L/L/L/H	THR Green	PAPI Left/3.00° (49.2 ft)	1500/60 m White Caution zone 600 m yellow L/L/L/H	Red

REMARK :  
THR 28 permanently displaced 241 m. Supplementary approach lighting is inset into the runway.