

**VISUAL APPROACH CHART - ICAO**

1:250000



**AD ELEV 191 FEET**

ELEV and ALT in ft  
HGT in ft above AD ELEV

**TA 5000 AMSL**

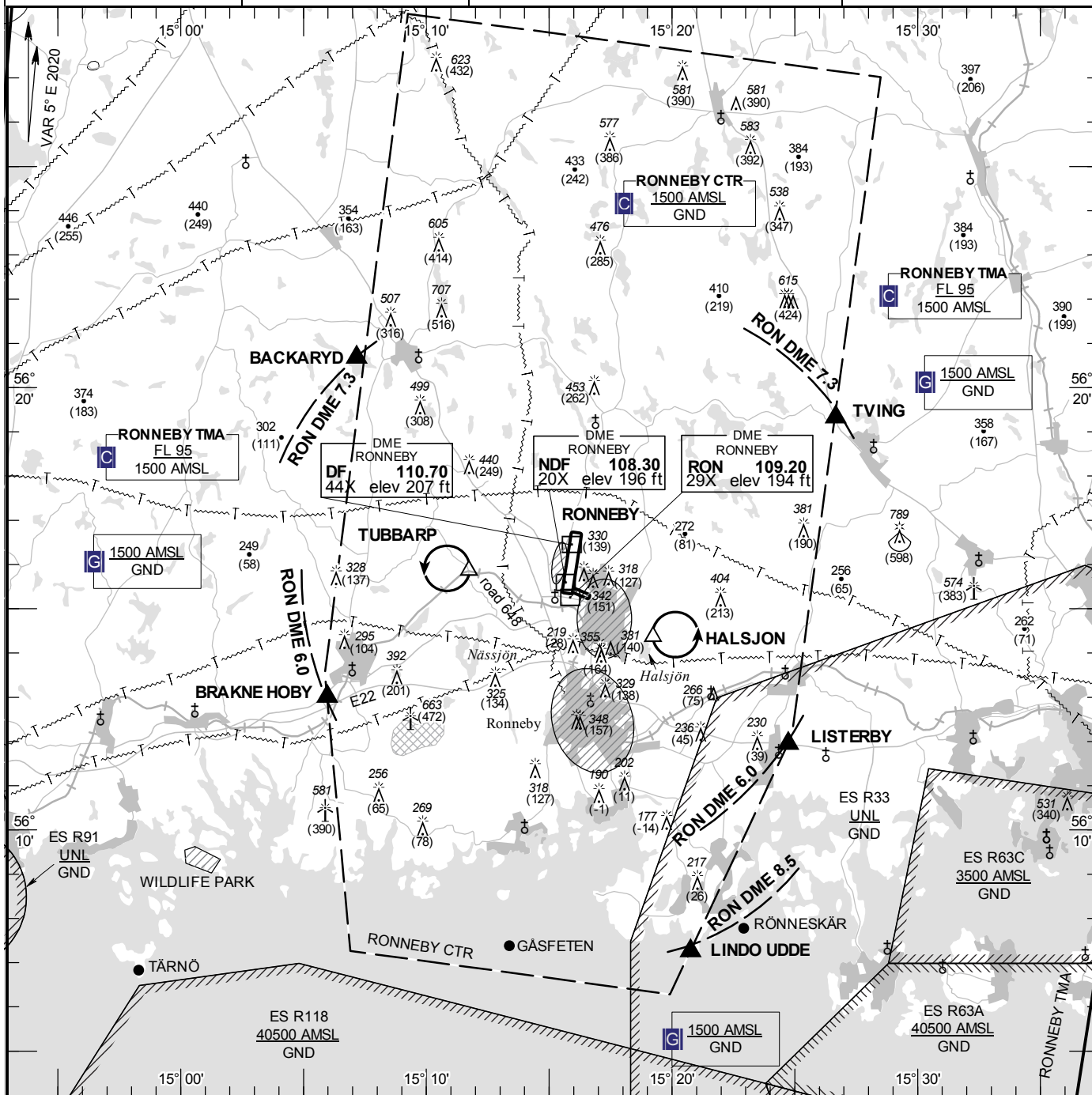
**RONNEBY TOWER 119.200**

**RONNEBY GROUND 121.850**

**RONNEBY APPROACH 128.450**

**AD 2 ESDF 6-1**

**RONNEBY SWEDEN**



**Communication failure**

- 1 SQUAWK 7600
- 2 Enter CTR via LISTERBY – Holding HALSJON or via BRAKNE HOBY – holding TUBBARP at or below 1000 ft AMSL to traffic circuit. Transmit blind your intentions.
- 3 Flash LDG-lights and watch TWR for optical signals.

RWY NR	THR ELEV	PAPI (MEHT)
01	181.3 ft	Left/3.00° (59 ft)
19	188.2 ft	Left/3.00° (71 ft)

**Legend**  
See GEN 2.3

**Remark/Warning**

Noise sensitive areas should be avoided below 1500 ft AMSL.

**Entry / exit point**

BACKARYD	562040N 0150710E
TVING	561919N 0152640E
LISTERBY	561156N 0152444E
LINDO UDDE	560715N 0152045E
BRAKNE HOBY	561300N 0150558E

**Holding**

- HALSJON:** Hold north of powerline and east of lake Halsjön, east of point 561421N 0151914E
- TUBBARP:** Hold west of pylon at intersection of road 648 and railway, west of point 561551N 0151143E