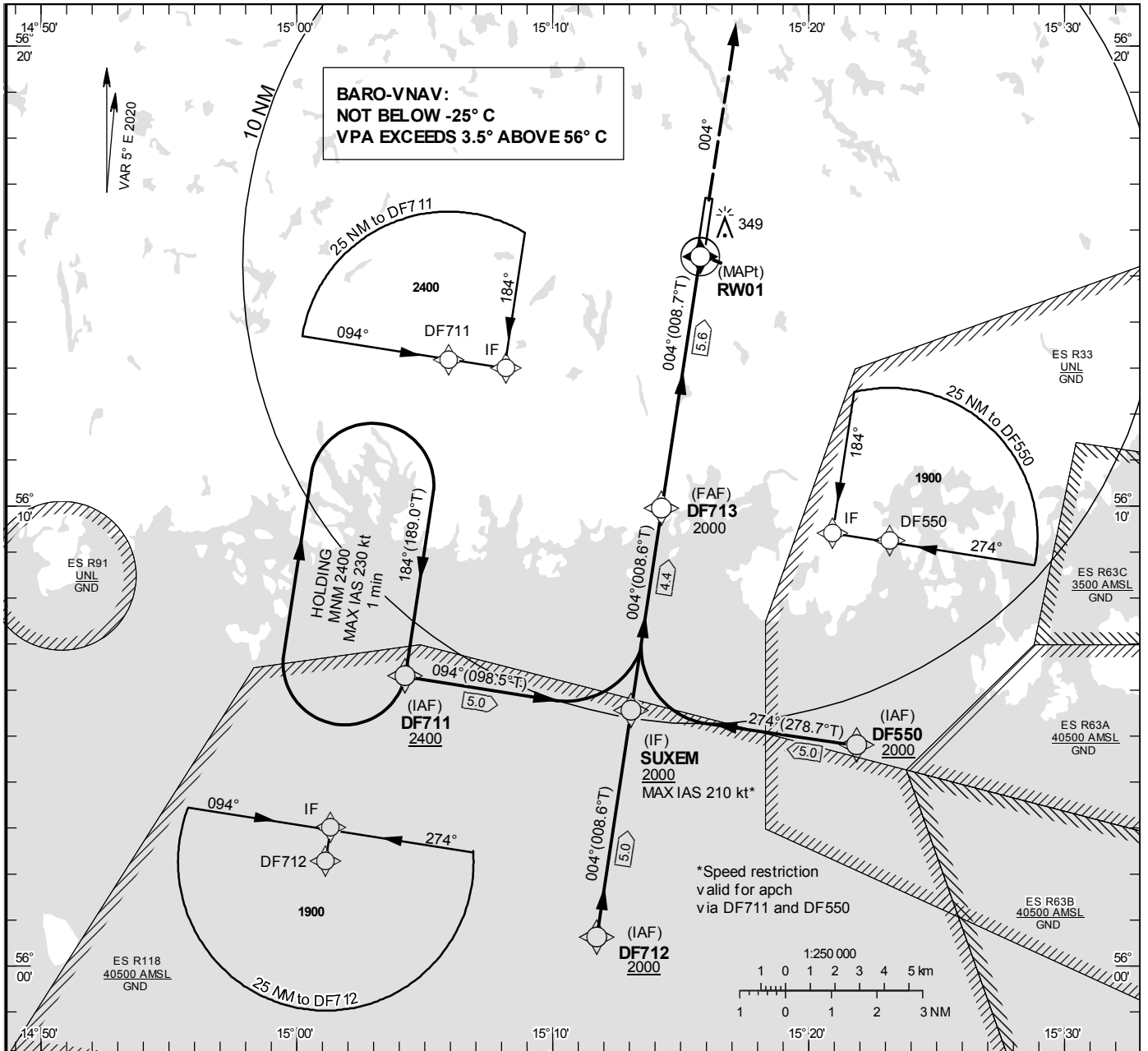


INSTRUMENT APPROACH CHART – ICAO

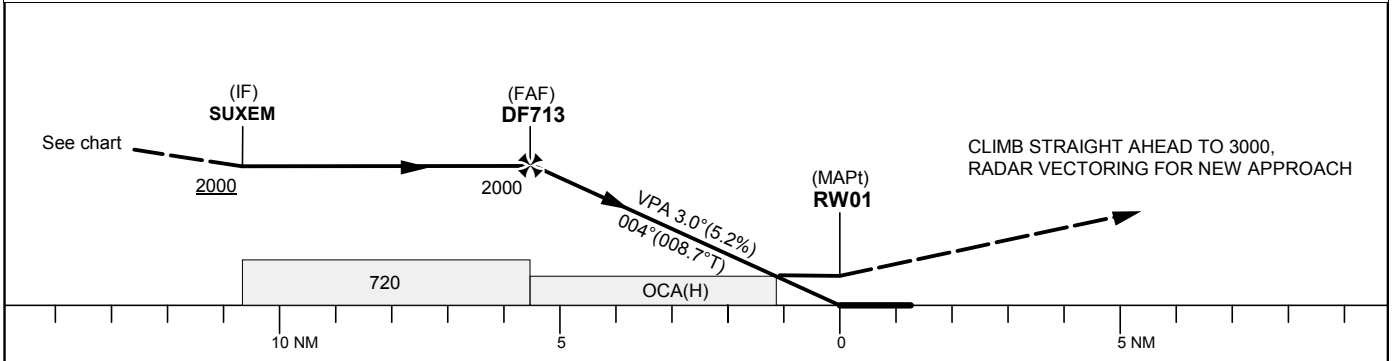
THR ELEV 181.3 ft, AD ELEV 191 ft
 OCH are related to THR.
 BRG are MAG (True).
 ALT, HGT and ELEV in ft.

RONNEBY TOWER	119.200
RONNEBY APPROACH	128.450

RNP RWY 01 (LNAV/VNAV, LNAV only)



TA 5000 ft AMSL RDH 50.0 ft



Cat of ACFT	OCA (H)				Final approach	Distance FAF-MAPt 5.6 NM						
	A	B	C	D		Dist to RW 01 (NM)	5	4	3	2		
LNAV/VNAV	480(300)	500(320)	500(320)	510(330)	ALT	1820	1500	1190	870			
LNAV	580(400)				GS	kt	80	100	120	140	160	180
					Rate of descent	ft/min	425	530	635	745	850	955

RNP RWY 01 via DF550

Path Desc	Waypoint Identifier	Fly-over	Course °M(°T)	Dist (NM)	Turn Dir	Altitude	Speed	VPA/RDH	Rec Navaid	Navigation Specification
IF	DF550	-	-	-	-	+2000	-	-	-	RNP APCH
TF	SUXEM	-	274°(278.7°)	5.0	-	+2000	-210	-	-	RNP APCH

RNP RWY 01 via DF711

Path Desc	Waypoint Identifier	Fly-over	Course °M(°T)	Dist (NM)	Turn Dir	Altitude	Speed	VPA/RDH	Rec Navaid	Navigation Specification
IF	DF711	-	-	-	-	+2400	-	-	-	RNP APCH
TF	SUXEM	-	094°(098.5°)	5.0	-	+2000	-210	-	-	RNP APCH

RNP RWY 01 via DF712

Path Desc	Waypoint Identifier	Fly-over	Course °M(°T)	Dist (NM)	Turn Dir	Altitude	Speed	VPA/RDH	Rec Navaid	Navigation Specification
IF	DF712	-	-	-	-	+2000	-	-	-	RNP APCH
TF	SUXEM	-	004°(008.6°)	5.0	-	+2000	-	-	-	RNP APCH

Path Desc	Waypoint Identifier	Fly-over	Course °M(°T)	Dist (NM)	Turn Dir	Altitude	Speed	VPA/RDH	Rec Navaid	Navigation Specification
IF	SUXEM	-	-	-	-	+2000	-	-	-	RNP APCH
TF	DF713	-	004°(008.6°)	4.4	-	@2000	-	-	-	RNP APCH
TF	RW01	Y	004°(008.7°)	5.6	-	@232	-	-3.0/50	-	RNP APCH
CA	-	-	004°(008.7°)	-	-	@3000	-	-	-	RNP APCH
VM	-	-	004°	-	-	-	-	-	-	RNP APCH

RNP RWY 01 – Holding at DF711

Path Desc	Waypoint Identifier	Fly-over	Course °M(°T)	Dist (NM)	Turn Dir	Altitude	Speed	VPA/RDH	Rec Navaid	Navigation Specification
HM	DF711	Y	184°(189.0°)	-	-	+2400	-230	-	-	RNP 1