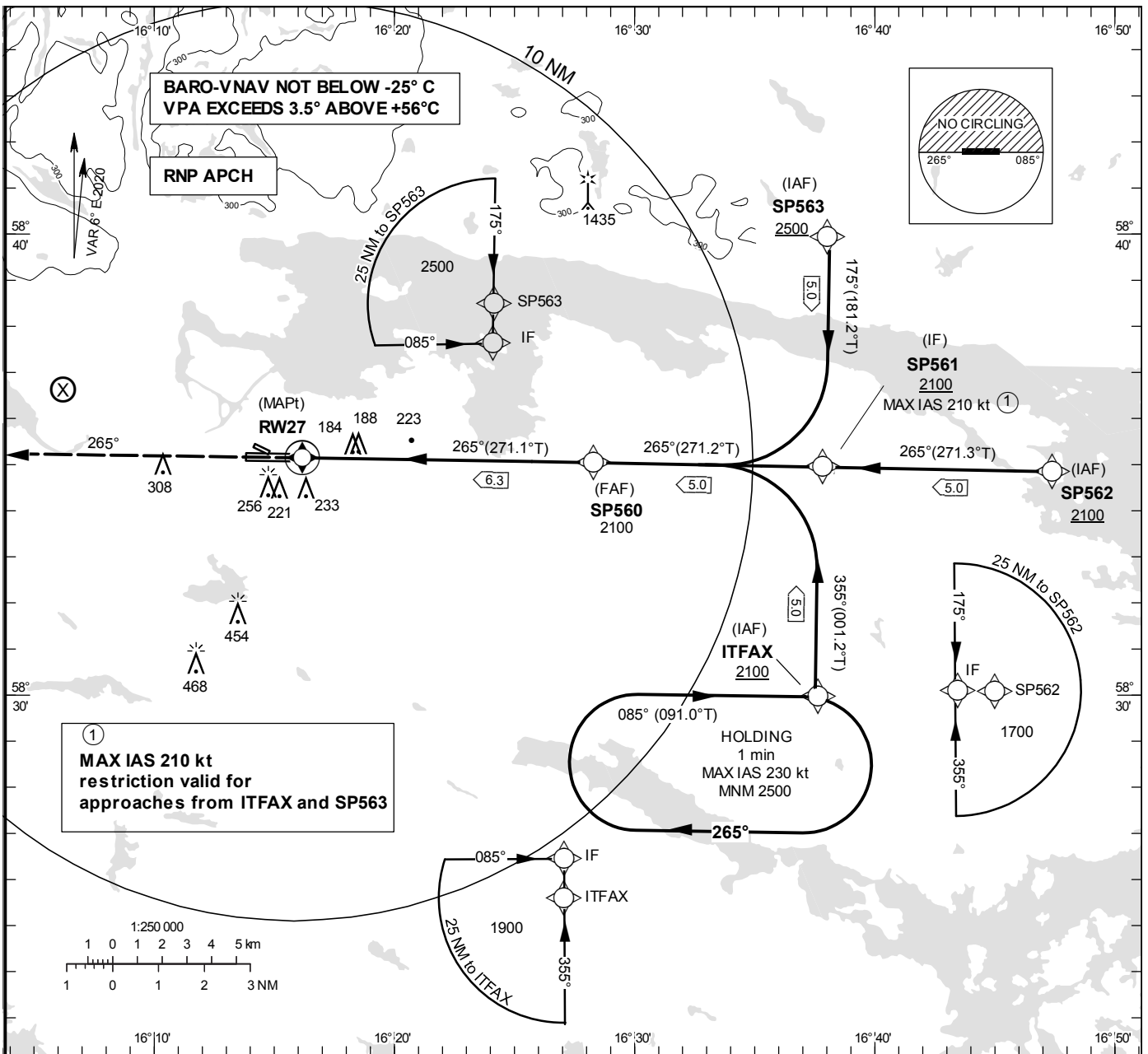


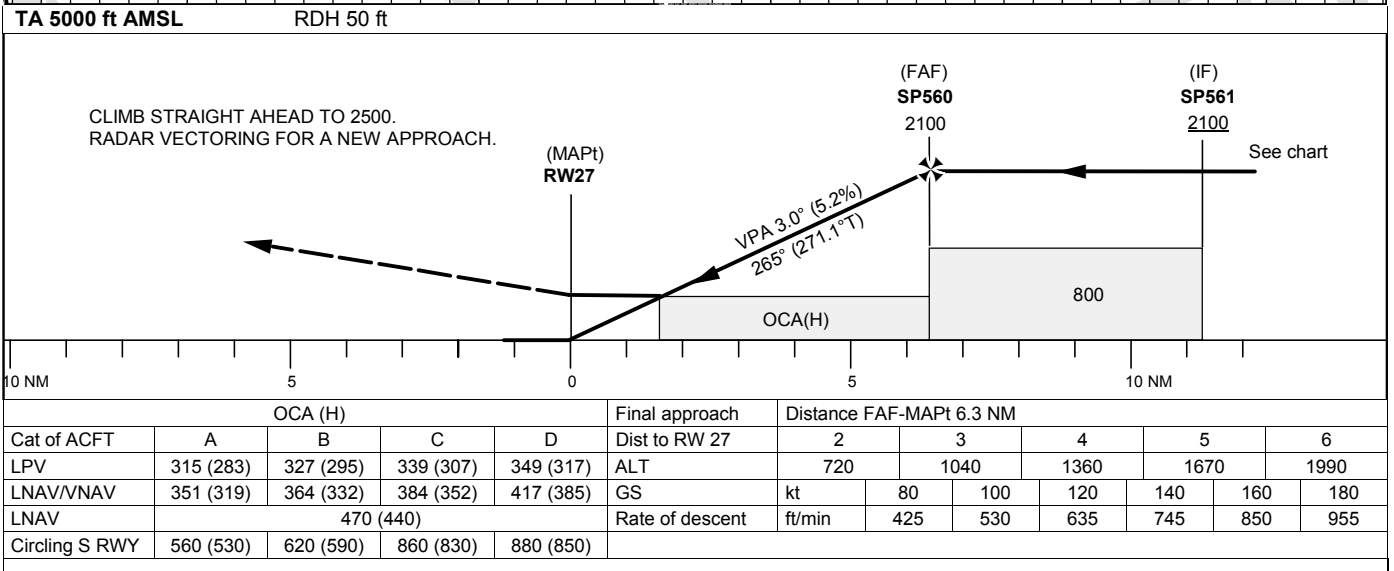
INSTRUMENT APPROACH CHART – ICAO
THR ELEV 32.3 ft, AD ELEV 32 ft
 OCH are related to THR.
 BRG are MAG (True).
 ALT, HGT and ELEV in ft.

KUNGSÄNGEN TOWER 120.355
 ÖSTGÖTA APPROACH 132.955

RNP RWY 27
 EGNOS Ch 68827 E 27A



① MAX IAS 210 kt restriction valid for approaches from ITFAX and SP563



| RNP RWY 27 via SP562

Path Desc	Waypoint Identifier	Fly-over	Course °M(°T)	Dist (NM)	Turn Dir	Altitude	Speed	VPA/RDH	Rec Navaid	Navigation Specification
IF	SP562	-	-	-	-	+2100	-	-	-	RNP APCH
TF	SP561	-	265°(271.3°)	5.0	-	+2100	-	-	-	RNP APCH

| RNP RWY 27 via SP563

Path Desc	Waypoint Identifier	Fly-over	Course °M(°T)	Dist (NM)	Turn Dir	Altitude	Speed	VPA/RDH	Rec Navaid	Navigation Specification
IF	SP563	-	-	-	-	+2500	-	-	-	RNP APCH
TF	SP561	-	175°(181.2°)	5.0	-	+2100	-210	-	-	RNP APCH

| RNP RWY 27 via ITFAX

Path Desc	Waypoint Identifier	Fly-over	Course °M(°T)	Dist (NM)	Turn Dir	Altitude	Speed	VPA/RDH	Rec Navaid	Navigation Specification
IF	ITFAX	-	-	-	-	+2100	-	-	-	RNP APCH
TF	SP561	-	355°(001.2°)	5.0	-	+2100	-210	-	-	RNP APCH

Path Desc	Waypoint Identifier	Fly-over	Course °M(°T)	Dist (NM)	Turn Dir	Altitude	Speed	VPA/RDH	Rec Navaid	Navigation Specification
IF	SP561	-	-	-	-	+2100	-	-	-	RNP APCH
TF	SP560	-	265°(271.2°)	5.0	-	@2100	-	-	-	RNP APCH
TF	RW27	Y	265°(271.1°)	6.3	-	@83	-	-3.0/50	-	RNP APCH
CA	-	-	265°(270.7°)	-	-	@2500	-	-	-	RNP APCH
VM	-	-	265°	-	-	-	-	-	-	RNP APCH

| ESSP Holding ITFAX

Path Desc	Waypoint Identifier	Fly-over	Course °M(°T)	Dist (NM)	Turn Dir	Altitude	Speed	VPA/RDH	Rec Navaid	Navigation Specification
HM	ITFAX	Y	085°(091.0°)	-	R	+2500	-230	-	-	RNAV 1

FAS Data Block

RNP RWY 27

Input data

Operation Type	0
SBAS Provider	1 (EGNOS)
Airport Identifier	ESSP
Runway	27
Runway Letter	0 (None)
Approach Performance Designator	0
Route Indicator	
Reference Path Data Selector	0
Reference Path Identifier	E27A
LTP/FTP Latitude	583508.9245N
LTP/FTP Longitude	0161610.5280E
LTP/FTP Ellipsoidal Height (metres)	37.8
FPAP Latitude	583510.0090N
Delta FPAP Latitude (seconds)	1.0845
FPAP Longitude	0161354.0760E
Delta FPAP Longitude (seconds)	-136.4520
Threshold Crossing Height	50.0
TCH Units Selector	0 (feet)
Glidepath Angle (degrees)	3.00
Course Width (metres)	105.00
Length Offset (metres)	0
HAL (metres)	40.0
VAL (metres)	50.0

Output data

Data Block	10 10 13 13 05 1B 00 00 01 37 32 05 F9 6D 24 19 40 6E FB 06 7A 15 79 08 00 F8 D5 FB F4 01 2C 01 64 00 C8 FA F6 84 F5 2A
Calculated CRC Value	F684F52A
Supplied CRC Value	F684F52A
Comparison Result	OK

Required Additional Data

ICAO Code	ES
LTP/FTP Orthometric Height (metres)	9.8