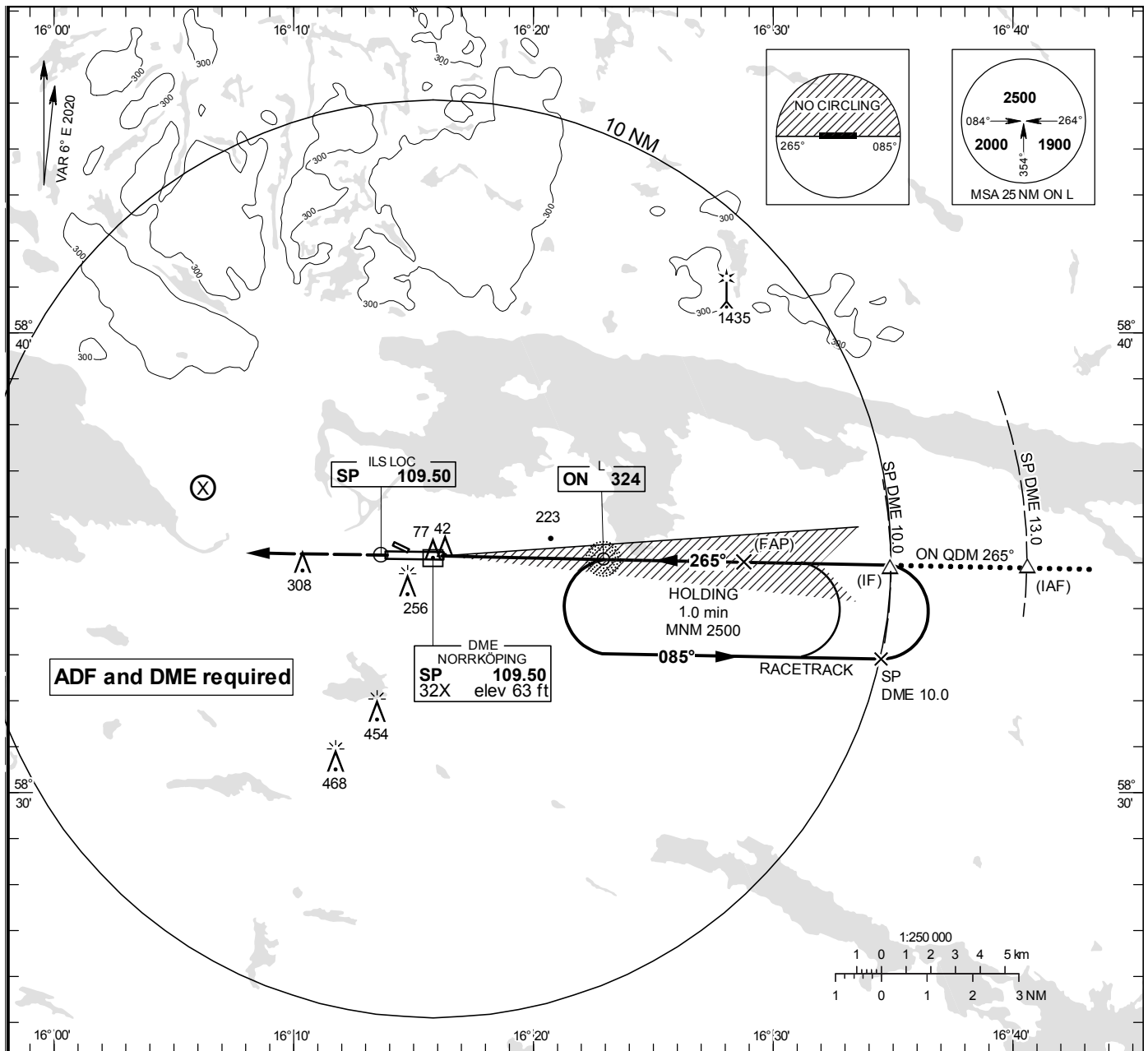


ILS y or LOC y RWY 27

KUNGSÄNGEN TOWER	120.355
ÖSTGÖTA APPROACH	132.955

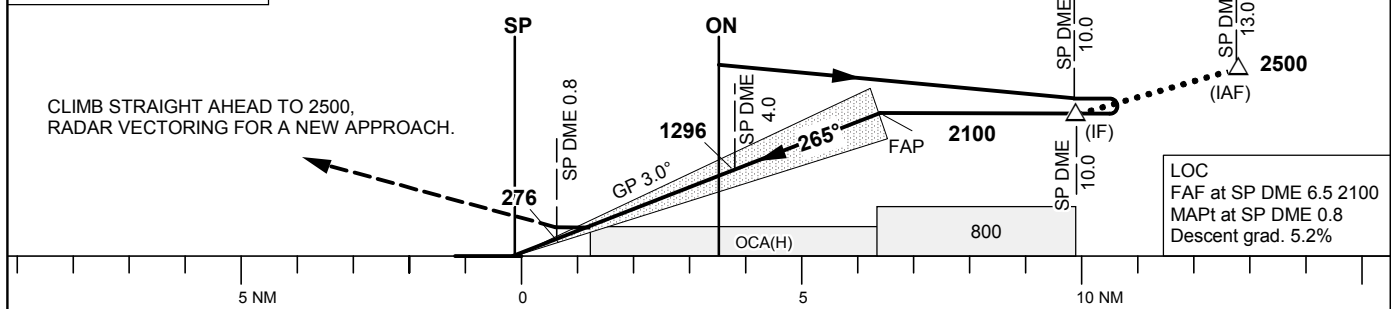
THR ELEV 32.3 ft, AD ELEV 32 ft
OCH are related to THR.
Circling OCH are related to AD ELEV.
BRG are MAG
ALT, HGT and ELEV in ft.

INSTRUMENT
APPROACH
CHART – ICAO



TA 5000 ft AMSL RDH 49.9 ft Max speed within racetrack 210 kt IAS *Timing not authorized for defining the MAPt

OM replaced BY SP DME 4.0
MM replaced BY SP DME 0.8



OCA (H)					Final approach		LOC Distance FAF-MAPt 5.7 NM*						
Cat of ACFT	A	B	C	D	DME SP NM	2	3	4	5	6			
Straight-in Approach	CAT I	181 (148)	189 (156)	199 (166)	210 (177)	ALT	660	980	1300	1620	1940		
	LOC	470 (440)				GS	kt	80	100	120	140	160	180
Circling S RWY	560 (530)		620 (590)	860 (830)	880 (850)	Time	min:s	4:18	3:26	2:52	2:27	2:09	1:55
					Rate of descent	ft/min	425	530	635	745	850	955	