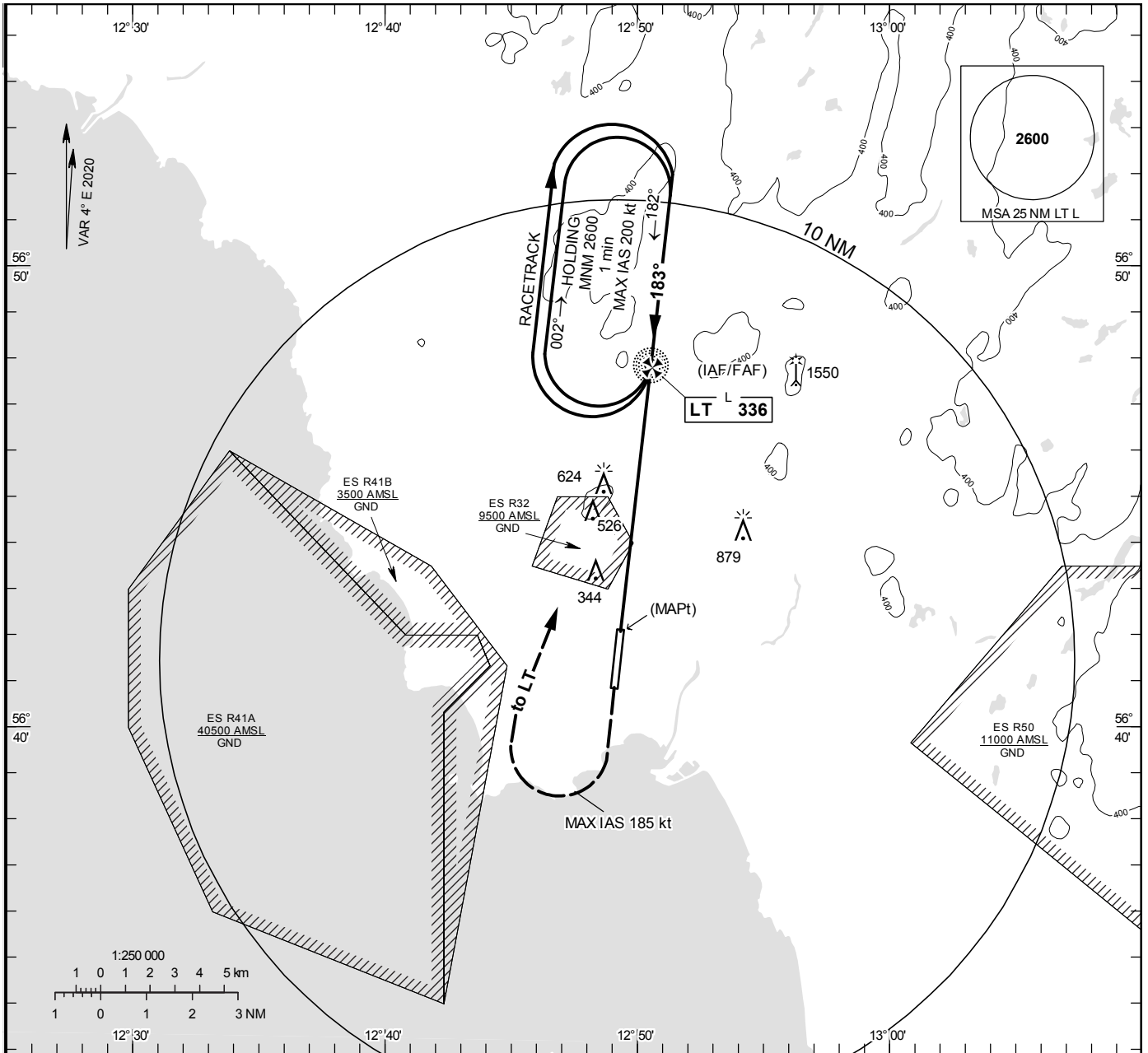


**INSTRUMENT  
APPROACH  
CHART – ICAO**

**THR ELEV 84.2 ft, AD ELEV 101 ft**  
 OCH are related to THR.  
 Circling OCH are related to AD ELEV.  
 BRG are MAG  
 ALT, HGT and ELEV in ft.

HALMSTAD TOWER	130.105
	135.055

**NDB RWY 19**

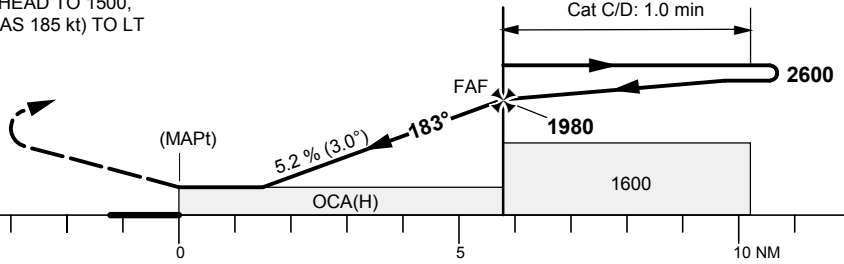


TA 5000 ft AMSL

Final APCH line 1° offset

CLIMB STRAIGHT AHEAD TO 1500,  
 TURN RIGHT (MAX IAS 185 kt) TO LT  
 CLIMBING TO 2600.

(IAF/FAF) Cat A: 2.0 min  
 Cat B: 1.5 min  
 Cat C/D: 1.0 min



Cat of ACFT	OCA (H)				Final approach	Distance FAF-MAPt 5.8 NM						
	A	B	C	D		3		4		5		
Straight-in Approach	880 (800)				DME MT NM	1040		1360		1680		
					ALT	kt	80	100	120	140	160	180
					GS	ft/min	425	530	635	745	850	955
Circling	880 (780)	880 (780)	1280 (1180)	1280 (1180)	Time	min:s	4:21	3:29	2:54	2:29	2:10	1:56
Circling Cat D Max IAS 195 kt					Rate of descent	ft/min	425	530	635	745	850	955