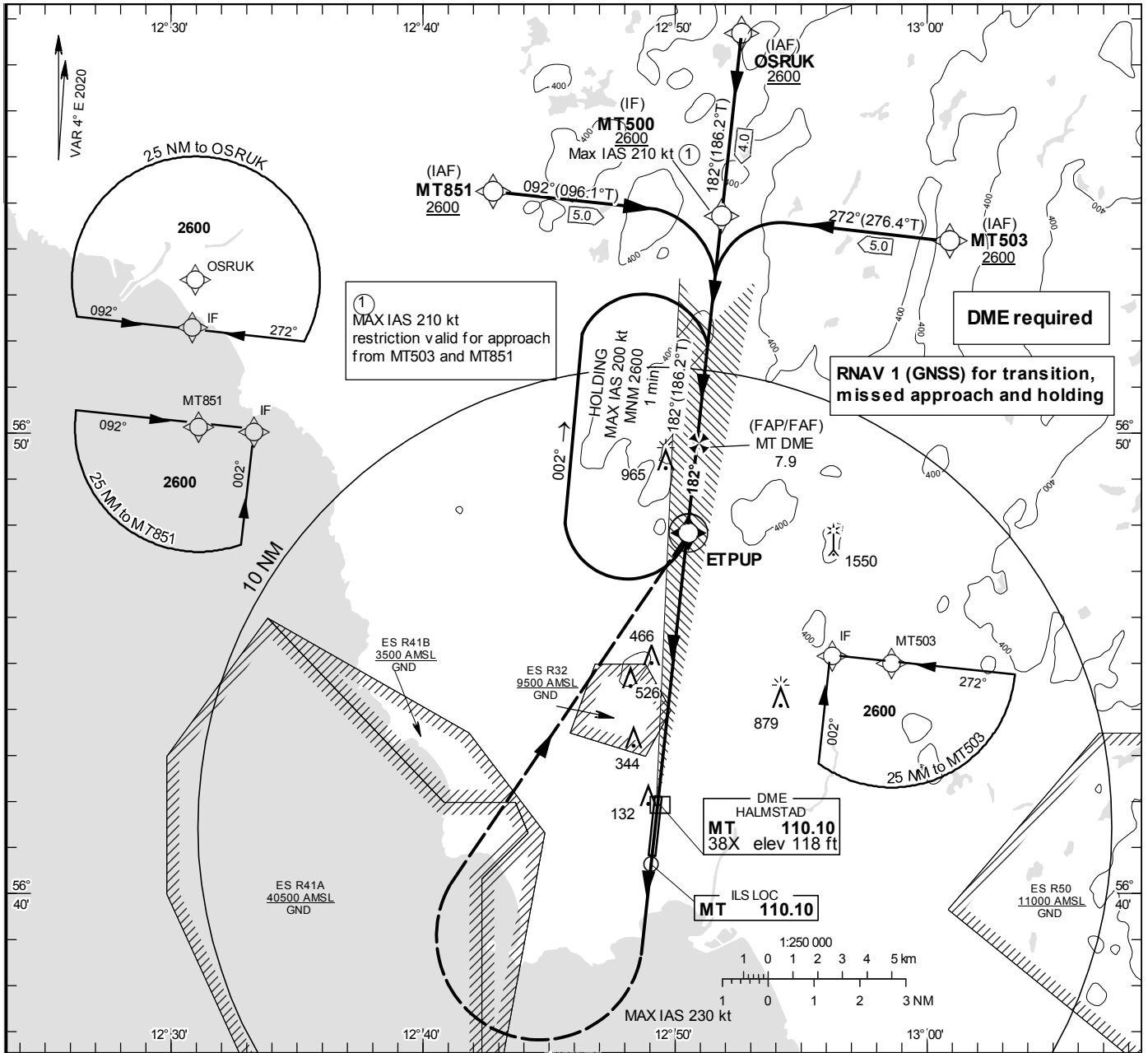


**INSTRUMENT
APPROACH
CHART – ICAO**

THR ELEV 84.2 ft, AD ELEV 101 ft
 OCH are related to THR.
 Circling OCH are related to AD ELEV.
 BRG are MAG
 ALT, HGT and ELEV in ft.

HALMSTAD TOWER	130.105
	135.055

ILS z or LOC z RWY 19



TA 5000 ft AMSL **RDH 50.9 ft** *Timing not authorized for defining the MAPt

OM replaced by MT DME 4.0
 MM replaced by MT DME 0.8

STRAIGHT AHEAD TO 1500.
 TURN RIGHT (MAX IAS 230 kt)
 TO ETPUP CLIMBING TO 2600
 AND JOIN ETPUP HOLDING.

LOC
 FAF at MT DME 7.9 2600
 SDF: MT DME 4.0 at 1370
 MAPt at MT DME 0.8
 Descent grad. 5.2% (3.0°)

See chart

OCA (H)					Final approach	LOC distance FAF-MAPt 7.1 NM*						
Cat of ACFT	A	B	C	D	DME MT NM	2	3	4	5	6	7	
Straight-in Approach	CAT I	232 (147)	243 (158)	255 (170)	269 (184)	ALT	730	1040	1370	1680	2000	2320
	LOC	720 (640)				GS	kt	80	100	120	140	160
Circling	640 (540)	830 (730)	1280 (1180)	1280 (1180)	Time	min:s	5:19	4:15	3:33	3:02	2:39	2:22
Circling Cat D Max IAS 195 kt					Rate of descent	ft/min	425	530	635	745	850	955