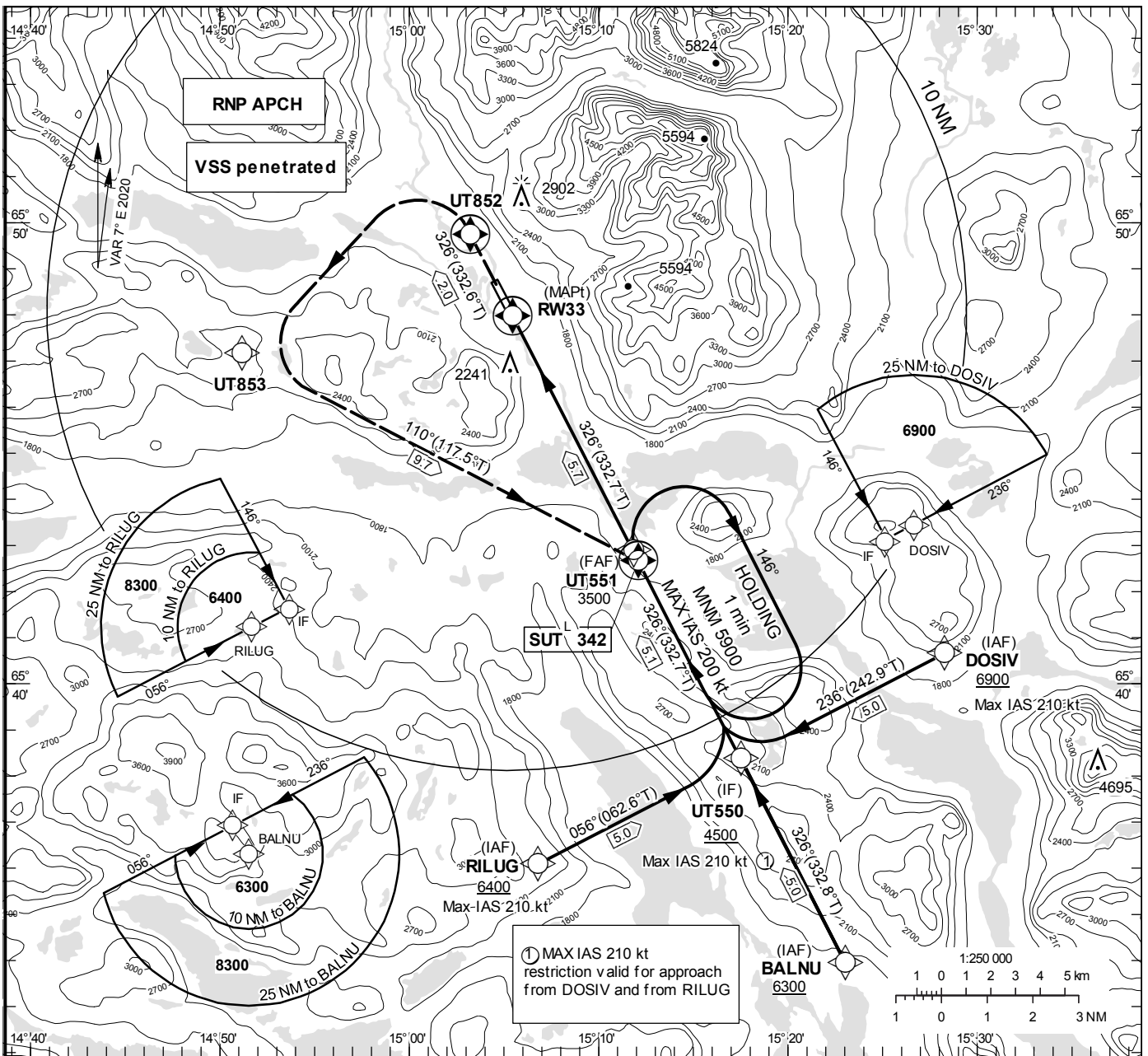


**INSTRUMENT APPROACH CHART – ICAO**

**THR ELEV 1502.5 ft, AD ELEV 1503 ft**  
 OCH are related to THR.  
 BRG are MAG (True).  
 ALT, HGT and ELEV in ft.

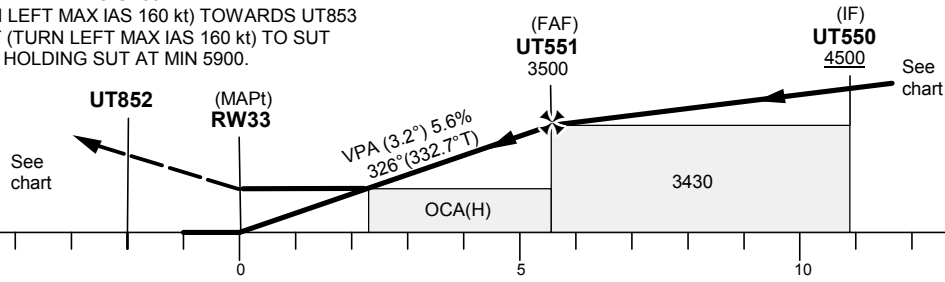
HEMAVAN INFORMATION 122.980

**RNP RWY 33 (LNAV, LPV only)**  
 EGNOS Ch 55015 E33A



TA 9000 ft AMSL RDH 50 ft

CLIMB STRAIGHT AHEAD TO UT852.  
 AT UT852 (TURN LEFT MAX IAS 160 kt) TOWARDS UT853  
 AND TURN LEFT (TURN LEFT MAX IAS 160 kt) TO SUT  
 AND JOIN RNAV HOLDING SUT AT MIN 5900.



Cat of ACFT	OCA (H)			Final approach Dist to RW 33	Distance FAF-MAPT 5.7 NM					
	A	B	C		4	5	6	7	8	
LPV	2372 (870)	2384 (882)	2392 (890)	ALT	2910				3250	
LNAV		2770 (1270)		GS	80	100	120	140	160	
				Rate of descent	ft/min	455	565	680	795	905

## RNP RWY 33 via BALNU

Path Desc	Waypoint Identifier	Fly-over	Course °M(°T)	Dist (NM)	Turn Dir	Altitude	Speed	VPA/RDH	Rec Navaid	Navigation Specification
IF	BALNU	-	-	-	-	+6300	-	-	-	RNP APCH
TF	UT550	-	326°(332.8°)	5.0	-	+4500	-	-	-	RNP APCH

## RNP RWY 33 via DOSIV

Path Desc	Waypoint Identifier	Fly-over	Course °M(°T)	Dist (NM)	Turn Dir	Altitude	Speed	VPA/RDH	Rec Navaid	Navigation Specification
IF	DOSIV	-	-	-	-	+6900	-210	-	-	RNP APCH
TF	UT550	-	236°(242.9°)	5.0	-	+4500	-210	-	-	RNP APCH

## RNP RWY 33 via RILUG

Path Desc	Waypoint Identifier	Fly-over	Course °M(°T)	Dist (NM)	Turn Dir	Altitude	Speed	VPA/RDH	Rec Navaid	Navigation Specification
IF	RILUG	-	-	-	-	+6400	-210	-	-	RNP APCH
TF	UT550	-	056°(062.6°)	5.0	-	+4500	-210	-	-	RNP APCH

Path Desc	Waypoint Identifier	Fly-over	Course °M(°T)	Dist (NM)	Turn Dir	Altitude	Speed	VPA/RDH	Rec Navaid	Navigation Specification
IF	UT550	-	-	-	-	+4500	-	-	-	RNP APCH
TF	UT551	-	326°(332.7°)	5.1	-	@3500	-	-	-	RNP APCH
TF	RW33	Y	326°(332.7°)	5.7	-	@1553	-	-3.2/50	-	RNP APCH
TF	UT852	Y	326°(332.6°)	2.0	-	-	-160	-	-	RNP APCH
DF	UT853	-	-	-	L	-	-160	-	-	RNP APCH
TF	SUT	Y	110°(117.5°)	9.7	L	+5900	-	-	-	RNP APCH
HM	SUT	Y	326°(332.7°)	-	R	+5900	-200	-	-	RNAV 1

## FAS Data Block

RNP RWY 33

## Input data

Operation Type	0
SBAS Provider	1
Airport Identifier	ESUT
Runway	33
Runway Direction	0
Approach Performance Designator	0
Route Indicator	
Reference Path Data Selector	0
Reference Path Identifier	E33A
LTP/FTP Latitude	654758.2700N
LTP/FTP Longitude	0150527.8100E
LTP/FTP Ellipsoidal Height (metres)	490.6
FPAP Latitude	654842.7635N
Delta FPAP Latitude (seconds)	44.4935
FPAP Longitude	0150431.4765E
Delta FPAP Longitude (seconds)	-56.3335
Threshold Crossing Height	15.0
TCH Units Selector	1
Glidepath Angle (degrees)	3.20
Course Width (metres)	105.00
Length Offset (metres)	104
HAL (metres)	40.0
VAL (metres)	50.0

## Output data

Data Block	10 14 15 13 05 21 00 00 01 33 33 05 7C F3 3C 1C 04 F4 79 06 2A 27 9B 5B 01 E5 47 FE 2C 81 40 01 64 0D C8 FA 36 82 9B 1D
Calculated CRC Value	36829B1D

## Required Additional Data

ICAO Code	ES
LTP/FTP Orthometric Height (metres)	458.0
FPAP Orthometric Height (metres)	458.1