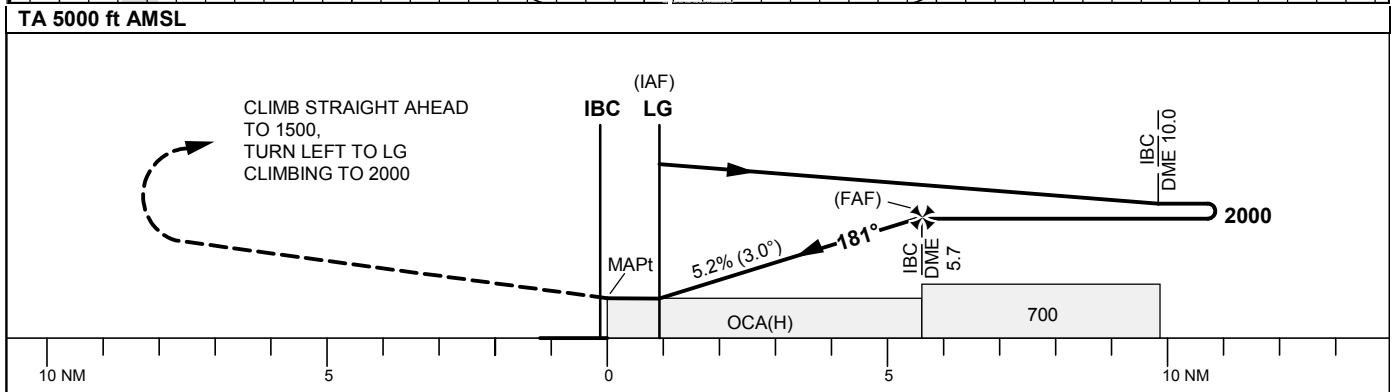
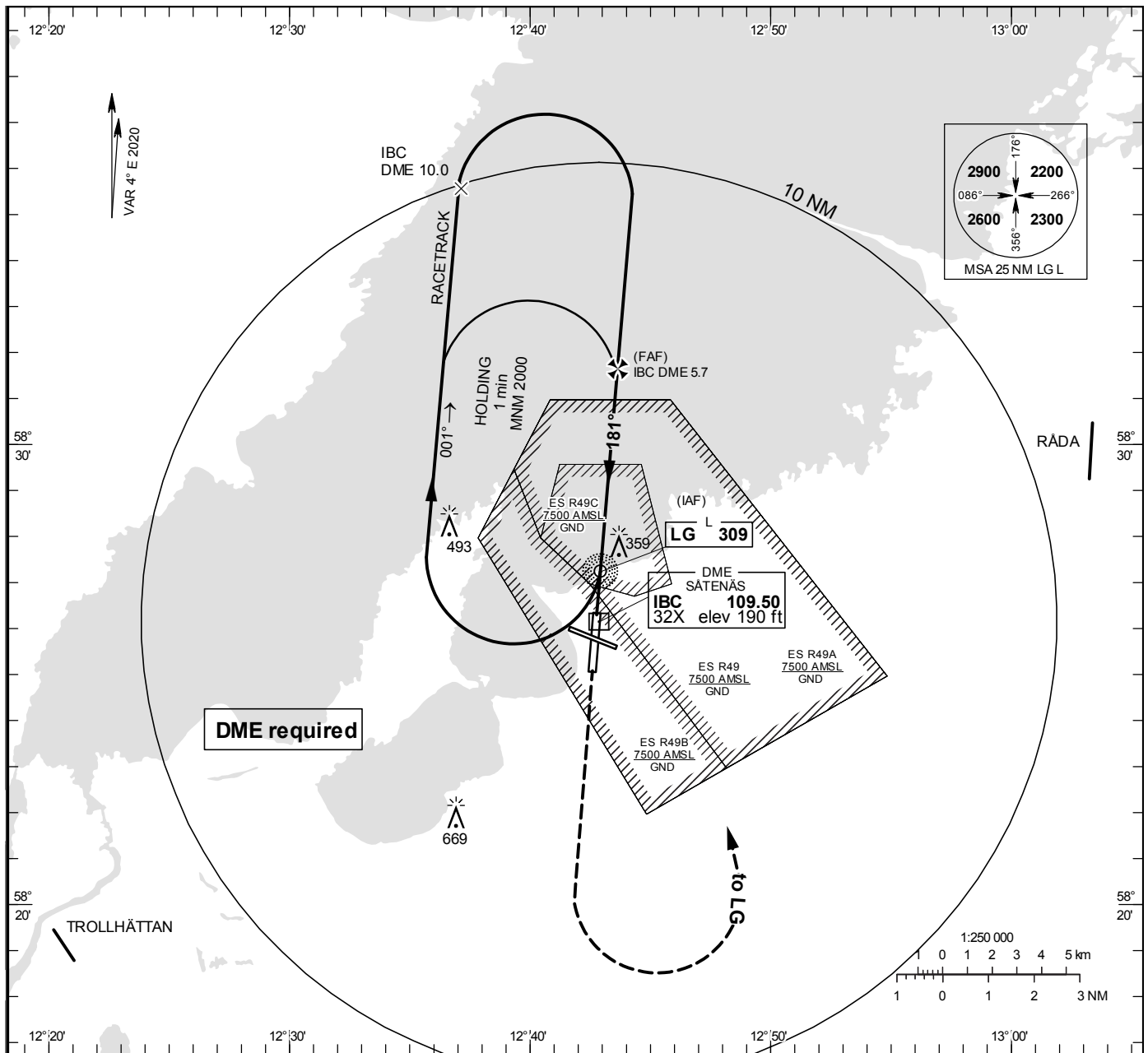


NDB RWY19

SÄTENÄS TOWER	128.200
SÄTENÄS APPROACH	134.550

THR ELEV 175.3 ft, AD ELEV 181 ft  
 OCH are related to THR.  
 Circling OCH are related to AD ELEV.  
 BRG are MAG  
 ALT. HGT and ELEV in ft.

INSTRUMENT  
APPROACH  
CHART – ICAO



OCA (H)					Final approach				Distance FAF-MAPt 5.6 NM							
Cat of ACFT	A	B	C	D	DME IBC NM	2	3	4	5	810	1130	1450	1770			
Straight-in Approach	610 (440)				ALT	810	1130	1450	1770	GS	80	100	120	140	160	180
Circling	660 (480)	660 (480)	890 (710)	1070 (890)	Time	min:s	4:11	3:21	2:47	2:23	2:05	1:52				
					Rate of descent	ft/min	425	530	635	745	850	955				