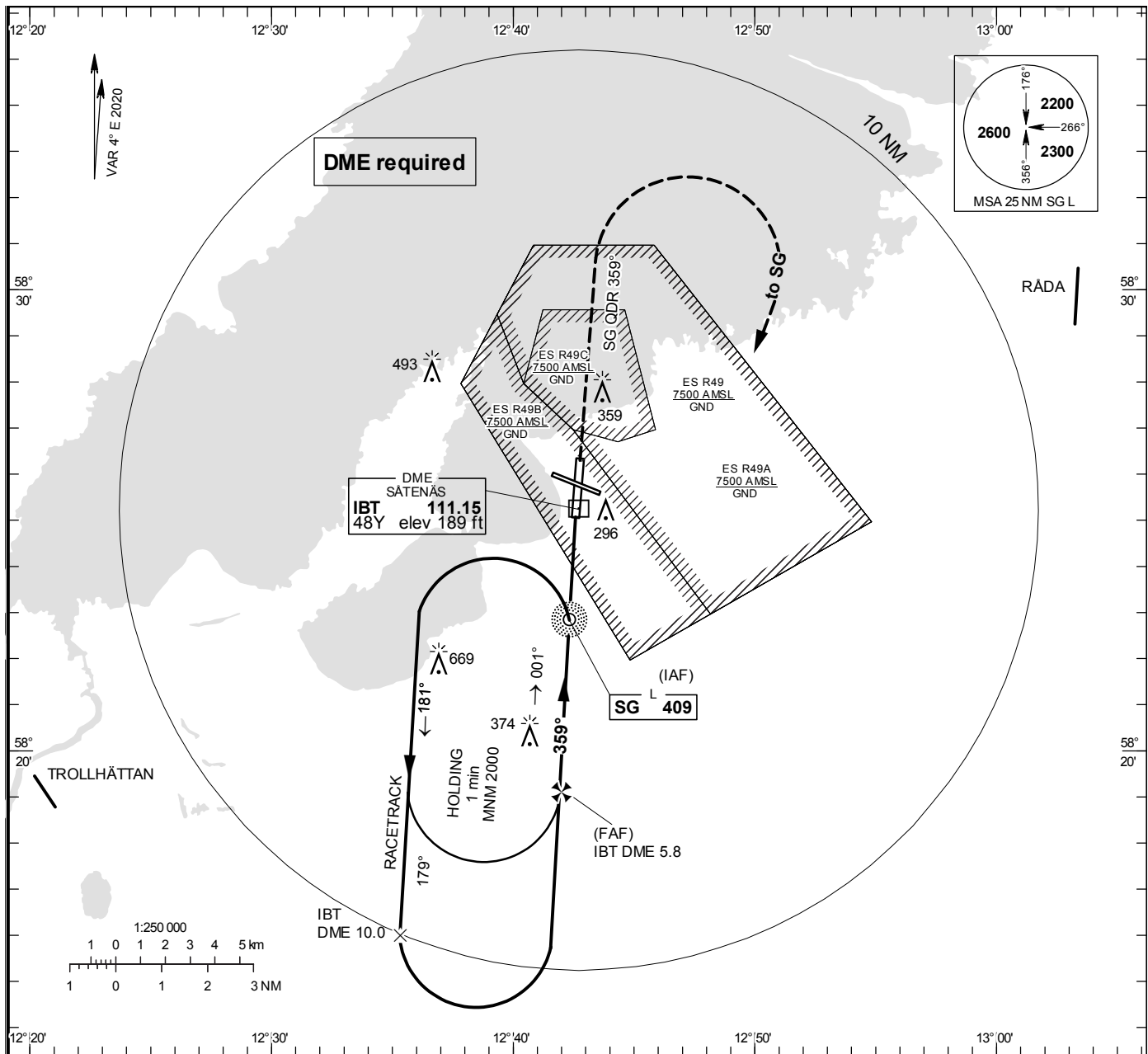


**INSTRUMENT  
APPROACH  
CHART – ICAO**

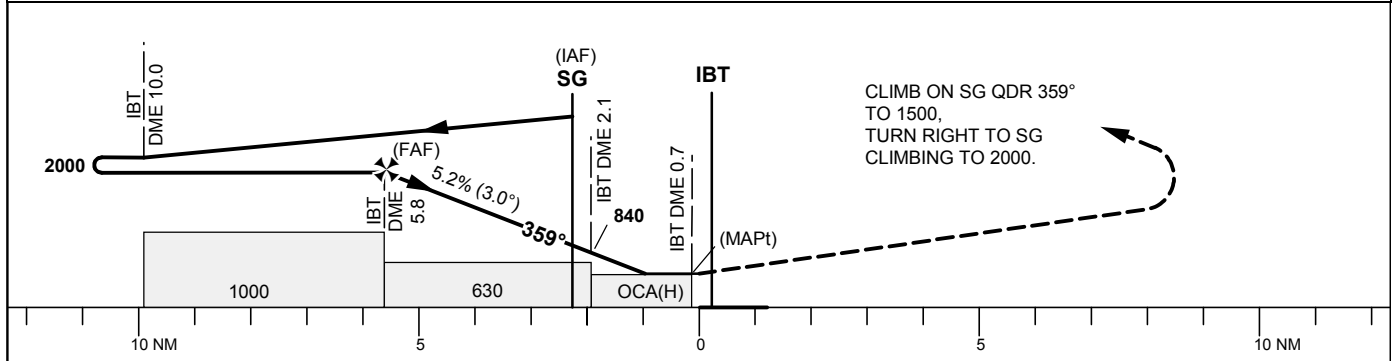
**THR ELEV 169.4 ft, AD ELEV 181 ft**  
 OCH are related to THR.  
 Circling OCH are related to AD ELEV.  
 BRG are MAG  
 ALT, HGT and ELEV in ft.

SÄTENÄS TOWER 128.200  
 SÄTENÄS APPROACH 134.550

**NDB RWY 01**



TA 5000 ft AMSL Final track 1° offset \*Timing not authorized for defining the MAPt



| Cat of ACFT          | OCA (H)   |           |           |            | Final approach Distance FAF-MAPt 5.1 NM* |        |      |      |      |      |      |      |
|----------------------|-----------|-----------|-----------|------------|--|--------|------|------|------|------|------|------|
|                      | A         | B         | C         | D          | DME IBT NM                               | 5      | 4    | 3    | 2    |      |      |      |
| Straight-in Approach | 530 (370) |           |           |            | ALT                                      | 1760   | 1440 | 1130 | 810  |      |      |      |
| Circling             | 660 (480) | 660 (480) | 890 (710) | 1070 (890) | GS                                       | kt     | 80   | 100  | 120  | 140  | 160  | 180  |
|                      |           |           |           |            | Time                                     | min:s  | 3:47 | 3:02 | 2:32 | 2:10 | 1:54 | 1:41 |
|                      |           |           |           |            | Rate of descent                          | ft/min | 425  | 530  | 635  | 745  | 850  | 955  |