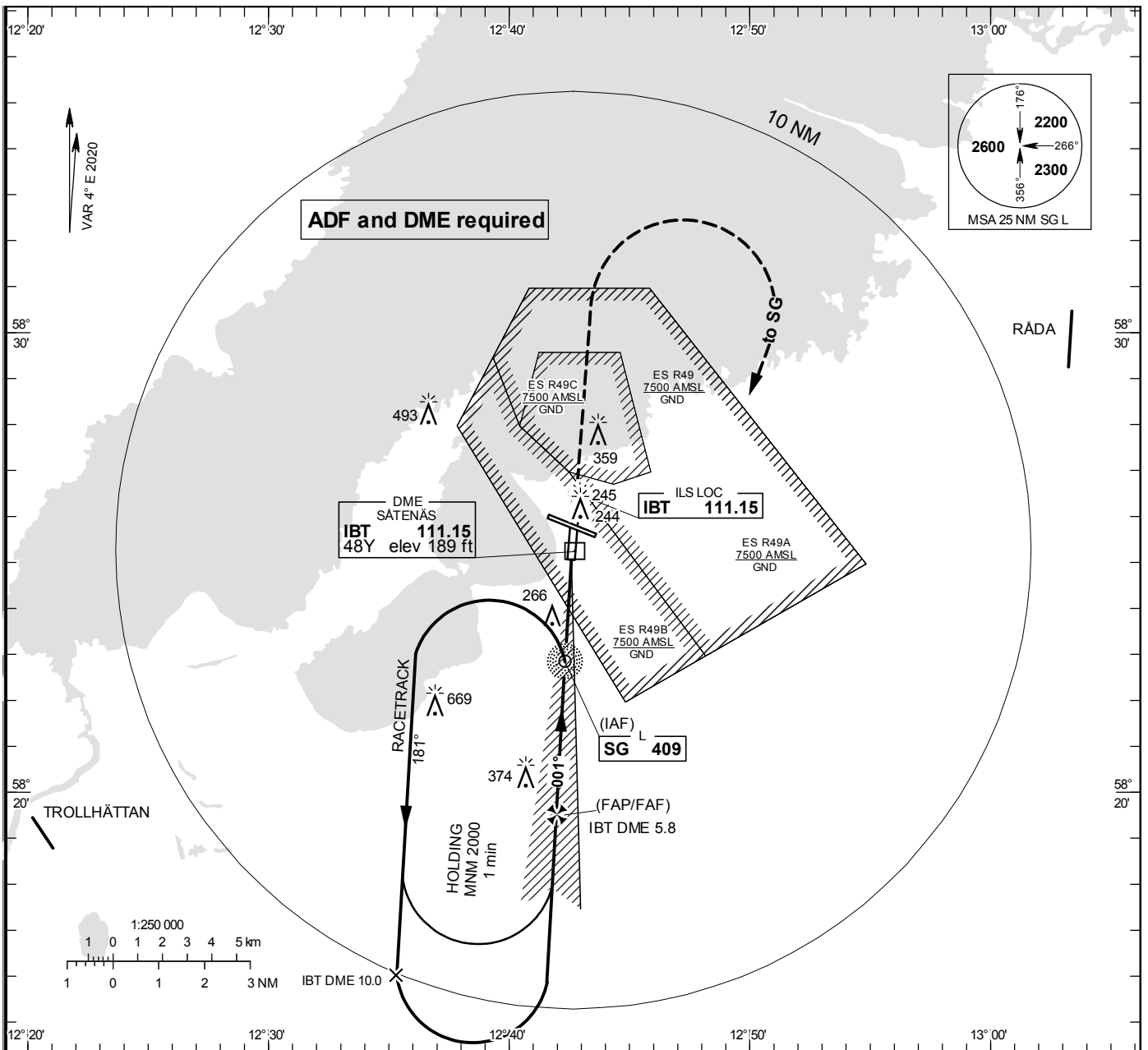


INSTRUMENT APPROACH CHART – ICAO

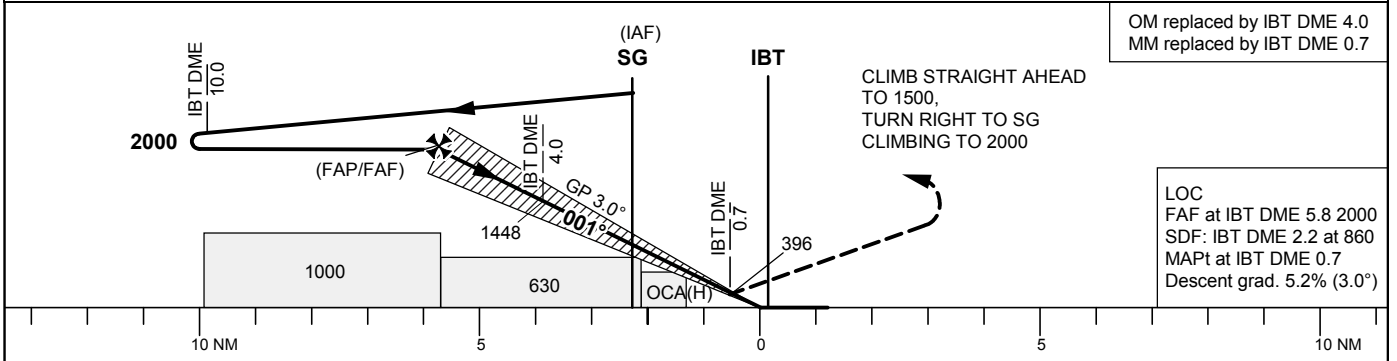
THR ELEV 169.4 ft, AD ELEV 181 ft
 OCH are related to THR.
 Circling OCH are related to AD ELEV.
 BRG are MAG
 ALT. HGT and ELEV in ft.

SÄTENÅS TOWER 128.200
 SÄTENÅS APPROACH 134.550

ILS or LOC RWY 01



TA 5000 ft AMSL RDH 53.8 ft *Timing not authorized for defining the MAPt



OCA (H)					Final approach		LOC Distance FAF-MAPt 5.1 NM*				
Cat of ACFT	A	B	C	D	DME IBT NM	5	4	3	2		
Straight-in Approach	313 (143)	323 (153)	335 (165)	349 (179)	ALT	1770	1450	1130	810		
LOC	520 (360)				GS	kt 80	100	120	140	160	180
Circling	660 (480)	660 (480)	890 (710)	1070 (890)	Time	min:s 3:46	3:01	2:31	2:09	1:53	1:41
					Rate of descent	ft/min 425	530	635	745	850	955